

United States Department of the Interior  
National Park Service

NATIONAL REGISTER OF HISTORIC PLACES  
REGISTRATION FORM

1. Name of Property

historic name: Fayetteville Confederate Cemetery

other name/site number: N/A

2. Location

street & number: Located north of Rock Street, approximately 800 feet  
north of its intersection with Willow Street

not for publication: N/A

city/town: Fayetteville

vicinity: N/A

state: AR county: Washington

code: AR 143

zip code: 72701

3. Classification

Ownership of Property: Private

Category of Property: Site

Number of Resources within Property:

Contributing	Noncontributing
<u>1</u>	<u>      </u> buildings
<u>1</u>	<u>      </u> sites
<u>1</u>	<u>      </u> structures
<u>1</u>	<u>      </u> objects
<u>4</u>	<u>0</u> Total

Number of contributing resources previously listed in the National  
Register: N/A

Name of related multiple property listing: N/A

=====

**4. State/Federal Agency Certification**

=====

As the designated authority under the National Historic Preservation Act of 1986, as amended, I hereby certify that this X nomination \_\_\_\_\_ request for determination of eligibility meets the documentation standards for registering properties in the National Register of Historic Places and meets the procedural and professional requirements set forth in 36 CFR Part 60. In my opinion, the property X meets \_\_\_\_\_ does not meet the National Register Criteria. \_\_\_\_\_ See continuation sheet.

Cathryn A. Slater  
Signature of certifying official

April 13, 1993  
Date

Arkansas Historic Preservation Program  
State or Federal agency and bureau

In my opinion, the property \_\_\_\_\_ meets \_\_\_\_\_ does not meet the National Register criteria. \_\_\_\_\_ See continuation sheet.

\_\_\_\_\_  
Signature of commenting or other official

\_\_\_\_\_  
Date

\_\_\_\_\_  
State or Federal agency and bureau

=====

**5. National Park Service Certification**

=====

I, hereby certify that this property is:

\_\_\_\_ entered in the National Register  
\_\_\_\_ See continuation sheet.  
\_\_\_\_ determined eligible for the  
National Register  
\_\_\_\_ See continuation sheet.  
\_\_\_\_ determined not eligible for the  
National Register  
\_\_\_\_ removed from the National Register  
\_\_\_\_ other (explain): \_\_\_\_\_

\_\_\_\_\_  
Signature of Keeper

\_\_\_\_\_  
Date  
of Action

=====

**6. Function or Use**

=====

Historic: FUNERARY

Sub: Cemetery

Current: FUNERARY

Sub: Cemetery

=====

## 7. Description

=====

Architectural Classification:

N/A  
\_\_\_\_\_  
\_\_\_\_\_  
\_\_\_\_\_  
\_\_\_\_\_

Other Description: N/A\_\_\_\_\_

Materials: foundation N/A\_\_\_\_\_ roof N/A\_\_\_\_\_  
walls N/A\_\_\_\_\_ other Cut stone wall\_\_\_\_\_  
Wood frame gazebo\_\_\_\_\_

Describe present and historic physical appearance. X See continuation sheet.

=====

## 8. Statement of Significance

=====

Certifying official has considered the significance of this property in relation to other properties: Locally\_\_\_\_\_.

Applicable National Register Criteria: A\_\_\_\_\_

Criteria Considerations (Exceptions): D\_\_\_\_\_

Areas of Significance: MILITARY\_\_\_\_\_  
CONSERVATION\_\_\_\_\_  
\_\_\_\_\_  
\_\_\_\_\_  
\_\_\_\_\_

Period(s) of Significance: 1873-c. 1910\_\_\_\_\_

Significant Dates: 1873\_\_\_\_\_

Significant Person(s): N/A\_\_\_\_\_  
\_\_\_\_\_

Cultural Affiliation: N/A\_\_\_\_\_

Architect/Builder: Venn, F. H., Company\_\_\_\_\_  
\_\_\_\_\_  
\_\_\_\_\_

State significance of property, and justify criteria, criteria considerations, and areas and periods of significance noted above.  
X See continuation sheet.

## 9. Major Bibliographical References

X See continuation sheet.

Previous documentation on file (NPS):

- preliminary determination of individual listing (36 CFR 67) has been requested.  
 - previously listed in the National Register  
 - previously determined eligible by the National Register  
 - designated a National Historic Landmark  
 - recorded by Historic American Buildings Survey # \_\_\_\_\_  
 - recorded by Historic American Engineering Record # \_\_\_\_\_

**Primary Location of Additional Data:**

- X State historic preservation office  
 - Other state agency  
 - Federal agency  
 - Local government  
 - University  
 - Other -- Specify Repository: \_\_\_\_\_

## 10. Geographical Data

**Acreage of Property:** 3.48

UTM References: Zone Easting Northing      Zone Easting Northing

<b>A</b>	<u>15</u>	<u>396220</u>	<u>3991150</u>	<b>B</b>	—	—	—
<b>C</b>	—	—	—	<b>D</b>	—	—	—

See continuation sheet.

Verbal Boundary Description:        See continuation sheet.

Beginning at a point formed by the intersection of the northern edge of Rock Street with a roughly-perpendicular line running along the western edge of the associated gravel drive, proceed northerly along said edge to its intersection with a line running along the northeastern edge of the octagonal stone wall; thence proceed northwesterly along said line to its intersection with a line running along the wall's northern edge; thence proceed westerly along said line to its intersection with a line running along the wall's northwestern edge; thence proceed southwesterly along said line to its intersection with the metal fenceline that abuts the wall's western edge; thence proceed southerly along said line to its intersection with the northern edge of Rock Street; thence proceed easterly along said line to the point of beginning (see attached sketch map).

Boundary Justification:      See continuation sheet.

This boundary includes all of the property historically associated with the resource and all of the adjacent property that retains any historic association with the cemetery and its use.

=====

**11. Form Prepared By**

=====

Name/Title: Mark Christ, Special Projects Coordinator

Organization: Arkansas Historic Preservation Program Date: April 9, 1993

Street & Number: 323 Center Street, Suite 1500 Telephone: (501) 324-9880

City or Town: Little Rock State: AR ZIP: 72201

United States Department of the Interior  
National Park ServiceNational Register of Historic Places  
Continuation SheetSection number 7 Page 1**Summary**

The Confederate Cemetery at Fayetteville consists of approximately 3.48 acres surrounded by an octagonal stone wall on the western slope of East Mountain in Fayetteville. The graves are divided according to the home states of the buried soldiers: Arkansas, Louisiana, Texas and Missouri. The centerpiece of the cemetery is a Confederate monument. There is a Victorian-era gazebo located within the grounds.

**Elaboration**

The Confederate Cemetery at Fayetteville consists of approximately 3.48 acres surrounded by an octagonal stone wall on the western slope of East Mountain in Fayetteville. The centerpiece of the cemetery is a monument consisting of a gray granite base approximately 20 feet high sitting on a concrete base. It is topped by a bronze figure of a Confederate soldier, approximately six-feet tall, gazing to the northeast, holding a rifle with its butt grounded, and with its left leg resting on a field pack. The statue has several bullet holes in it and part of the left hand is missing.

Each side of the base features the name of a state. On the east, or Arkansas, side a furled banner is carved into the base and serves as a background for a metal seal of the Confederate States of America. Below that is a metal wreath surrounding the inscribed words "Pro Patria." The inscription beneath reads: "These were men/whom power could not corrupt/whom death could not terrify/whom defeat could not dishonor." Below that is inscribed the word "Arkansas." It is further inscribed "Erected by the/Southern Memorial Association/of Washington Co. Ark./AD 1897". The west, or Texas, side features metal crossed rifles. The word "Texas" is inscribed and below that is inscribed "A Tribute/of/Southern Women." The word "Texas" has been damaged. The north, or Missouri, side of the monument features a metal trumpet and drum. It is inscribed with the word "Missouri" above the words "Pea Ridge". The south, or Louisiana, side of the monument features metal crossed sabres. It is inscribed with the words "Louisiana" and, below that, "Prairie Grove."

The graves are arranged in sections radiating out from the central monument. The sections, each surrounded by six- to eight-inch, cut-stone curbs, are narrower at the end nearest the monument. Most of the marble headstones are eighteen inches by three inches by twelve inches and are rectangular in shape. There are a few rounded stones, and others that were privately purchased. Most were supplied by the federal government. The majority of these stones are blank and without inscriptions of any kind.

United States Department of the Interior  
National Park Service

## National Register of Historic Places Continuation Sheet

Section number 7 Page 2

---

Grave markers other than the small marble headstones in the Arkansas section include a stone flush with the ground reading "Joel Flood Smith/Slain in the Confederate Service/4 miles south of this place/Feb. 22, 1862/Aged 18 ys. 4 ms. 17 d./Erected by his father Jas. H. Smith" and an obelisk "In Memory of James Davis/Born Nov. 13, 1820/Died April 19, 1863."

In the Missouri Section is a white marble Confederate veteran's marker reading "Capt. John C. Toney/Co. B/3 Regt./Shelby's Brigade/CSA/1833/1920" and two stones commemorating Gen. William Yarnell Slack, on of which reads "Died from Wounds Suffered at the Battle of Elkhorn/William Yarnell Slack/Brig. Gen./2 Brig. Mo. State Gd./Confederate States Army/Aug. 1, 1816 March 20, 1862."

There are no atypical graves in the Texas section.

The Louisiana section has the least number of graves and features a few burials of family members of Confederate veterans. The Arkansas section has 204 markers, the other two sections contain approximately the same number. The overwhelming majority of the burials are Confederate war casualties gathered and reinterred after the Civil War.

An octagonal cut-stone wall, completed in 1890, surrounds the cemetery. It is about 18 inches thick and varies in height from three feet to five feet. A wrought iron archway reading "Confederate Cemetery" leads into the site on the southeast section of the octagonal wall. There are four wrought iron gates for admission. There are four brass plaques inset on the stone pillars flanking the main entrance. On the outside of the wall, the plaques read "Trespassers will be Punished to the Extent of the Law" and "Owned and Cared For by the Southern Memorial Association 1872-1926". On the inside of the wall is a 1972 plaque reading "Founders/Southern Memorial Association/of/Washington County/Established June 10, 1872" followed by a list of names and a 1989 plaque reading "To the Wonderful People, Who Made/This Gazebo and Rock Wall Possible" followed by a list of names.

There is an octagonal wooden gazebo located just south of the Arkansas graves section. It rests on a continuous cut-stone foundation and has a bellcast, wood-shingled roof tipped by a pointed metal finial. It features such Folk Victorian-style details as turned spindle posts flanked by turned-spindle brackets. Balustrades with simple, square balusters link the posts on all sides but the southwest elevation, which opens to five cut-stone steps. Wooden benches are located on the interior sections of four elevations. The gazebo, believed to have been built between 1900 and 1910, was restored in the 1980s by a University of Arkansas class as an architectural preservation project. It remains in good condition.



United States Department of the Interior  
National Park ServiceNational Register of Historic Places  
Continuation SheetSection number 8 Page 1

## Summary

Criterion A, local significance  
(Criteria Consideration D: Cemeteries)

The Confederate Cemetery in Fayetteville is eligible for the National Register of Historic Places under Criteria A with local significance for its link to the Southern Memorial Association of Washington County. It is being nominated under Criteria Consideration D: Cemeteries.

## Elaboration

The Southern Memorial Association of Washington County was established June 10, 1872, when a number of women met in answer to a notice in the June 6 Fayetteville Democrat calling for steps to establish a "Confederate burying ground." "Out of the many who answered this call, there were but thirty-eight enthusiastic enough to undertake the task to which we that day pledged ourselves," SMA president Mrs. Lizzie Pollard noted 25 years later. The organization held its first meeting June 18, 1872, at which it adopted a constitution and by-laws and officially adopted the name "Southern Memorial Association."

Fundraising activities began soon after. By April 11, 1873, the association was able to pay Charles W. and Serena Walker \$150 for a 3.48 acre site on the western slope of East Mountain, also known as Mount Sequoyah, adjacent to the Walker family cemetery plot.

The SMA also began locating the graves of dead Confederates throughout Washington County and adjacent areas of northwest Arkansas.

The group contracted with a Mr. J.D. Henry in March of 1873 to begin gathering Confederate dead at the Pea Ridge battlefield in Benton County (NR listed October 15, 1966) for transport to the Fayetteville cemetery at a cost of \$1.40 per body. Confederate remains from the Prairie Grove Battlefield (NR listed September 4, 1970; amended November 9, 1992) and other locations in northwest Arkansas were carried to Fayetteville and reburied for \$2.50 each.

The Confederate Cemetery was officially dedicated June 10, 1873, the SMA's first anniversary. Approximately 300 were buried there at that time; the number eventually grew to about 800 burials. "Our first year was one of marvelous success at the end of it, and as the result of tireless labor we were able to dedicate to the memory of the soldiers whose bodies were to rest there this cemetery, well enclosed, and three hundred bodies already interred there," Mrs. Pollard remembered 24 years later. "The grounds, the fence, the removing of bodies, clearing and improving cemetery, cost us in round numbers \$1,200. The money for all this was raised



United States Department of the Interior  
National Park ServiceNational Register of Historic Places  
Continuation SheetSection number 8 Page 2

by our own labor, by giving suppers, bazaars, theatrical performances, etc."

In 1908, SMA Vice-President Mrs. J.D. Walker noted that "the plan of the cemetery is octagon in shape and divided into eight triangular sections, with the apex of each section resting at the base of the monument, which is in the center of the grounds. Four of these sections are for graves, alternating with four for ornamental shrubbery."

Sandstone head and foot markers were installed in 1876; they were replaced with marble markers in 1903.

The cemetery received its highest-ranking burial in 1880, when the remains of Brigadier General William Yarnell Slack were removed from the Roller cemetery at Moore's Hill, northwest of Gateway in Benton County, to rest at the head of the Missouri section of the Fayetteville graveyard. Slack, a Mexican War veteran, was wounded in the groin at the Battle of Wilson's Creek August 10, 1861. He recovered from those wounds but was shot "almost in the same place" as he led his Missouri volunteers at the Battle of Pea Ridge. Carried from the field and moved three times to avoid capture by Federal troops, Slack succumbed to his wounds March 21, 1862, one of three Confederate generals that died from Pea Ridge injuries.

While the scant extant records show that a few commissioned officers are buried in the Confederate Cemetery, most of the remains there are of private soldiers.

The original wooden-plank fence was replaced beginning in 1885, when donations were solicited by the SMA for the project. The cut-stone wall was finished by 1890. The native-stone entrance gate, designed by an architect named Dinwiddie, was added in 1926-27 at a cost of \$682.

In 1889, "The Goodspeed Biographical and Historical Memoirs of Northwestern Arkansas" noted that the "Confederate Military Cemetery ... is an octagon, surrounded by a stone wall, with a smaller octagon in the center, intended for a monument, but which now contains the grave of Gen. Slack ... The cemetery is divided into eight convergent sections, the four sections of graves alternating with the remaining four, which are devoted to ornamental shrubbery. Here lie about 700 who wore the gray at Pea Ridge, Prairie Grove and Fayetteville, embracing citizens of Texas, Louisiana, Missouri and Arkansas; and it represents a greater mausoleum in the hearts of mothers, sisters and daughters of those men, or such of them as lived in Washington County, for it is the result of the efforts of the Southern Memorial Association, a society of ladies organized in Fayetteville, and other parts of the county, in June 1872; it was dedicated by them precisely a year later."

United States Department of the Interior  
National Park Service

## National Register of Historic Places Continuation Sheet

Section number 8 Page 3

---

In 1896, the SMA decided to install a monument in the center of the graveyard and the organization again began fund-raising activities. "People of Canehill, Bentonville, Prairie Grove, Cincinnati, Springdale and other northwest Arkansas towns gave active support to the monument enterprise," a later SMA president recalled, including lectures and recitals, song tournaments, card and parchesi tournaments, poetry readings, and distributions of cards with enough spaces for dimes to total \$1 when filled. By February 16, 1897, all but \$511 of the \$2,500 monument cost was raised.

Sixteen designs were submitted for the memorial and a committee of the SMA met on October 13, 1896 and selected one from the F.H. Venn Company of Memphis, TN.

The cornerstone of the monument was dedicated May 1, 1897, and "in that cornerstone that May Day was (sic) placed several contemporary records, among them a list of the soldiers buried in the cemetery, also a roll of the A.I.U. (Arkansas Industrial University) students who gave to the monument fund. The first silver dollar contributed ... was placed with these records in a strong metal box ... ."

The official dedication was held June 10, 1897 -- the 25th anniversary of the Southern Memorial Association of Washington County. Included in the procession to the dedication ceremony was a float "containing a number of our handsome girls representing the Southern states," a group of Confederate veterans led by General E.I. Stirman and preceded by the Fort Smith drum corps, SMA members in carriages ("the ladies were loudly cheered"), A.I.U. cadets, Odd Fellows and other fraternal societies, uniformed Knights of Pythias, and representatives of the Fayetteville fire department. "The noise of wheels was heard bringing people from all over northwest Arkansas to this celebration," a later SMA president recalled. "They came in great numbers, forming the largest crowd ever assembled before or since at the Confederate Cemetery."

The gazebo was added to the cemetery sometime after the turn of the century. (It is uncertain precisely when the structure was erected, as most of the SMA's records were lost in a fire. However, one 93-year-old member recalled that the "bandstand" was located in the "Confederate Cemetery Memorial Park" for "as long as anyone can remember" and other members placed it as dating from between 1900 and 1910.)

The Confederate Cemetery in Fayetteville remains a picturesque and moving monument to the efforts of the Southern Memorial Association of Washington County to commemorate the valor and sacrifice of Confederate soldiers in northwest Arkansas and is thus eligible for the National Register under Criterion A with local significance.

United States Department of the Interior  
National Park Service

**National Register of Historic Places  
Continuation Sheet**

Section number 9 Page 1

---

**Bibliography**

Fayetteville Sentinel, Tuesday, June 15, 1897, Vol. XXII, No. 29, Page 2.

Montgomery, Don. Confederate Cemetery in Fayetteville Research Report (Prairie Grove: Prairie Grove Battlefield State Park, November 28, 1990.)

"Confederate Cemetery of Fayetteville Feasibility Study," Arkansas Department of Parks and Tourism, Arkansas State Parks Division, Planning and Development Section, May 1992.

"The Battle of Pea Ridge 1862," Pea Ridge National Military Park, printed by Shofner's, Rogers, AR.

Harp, Chandler, Research Report: "Confederate Cemetery, Fayetteville, Arkansas, An Approach to Preservation," Benton County Preservation Project, 1991.

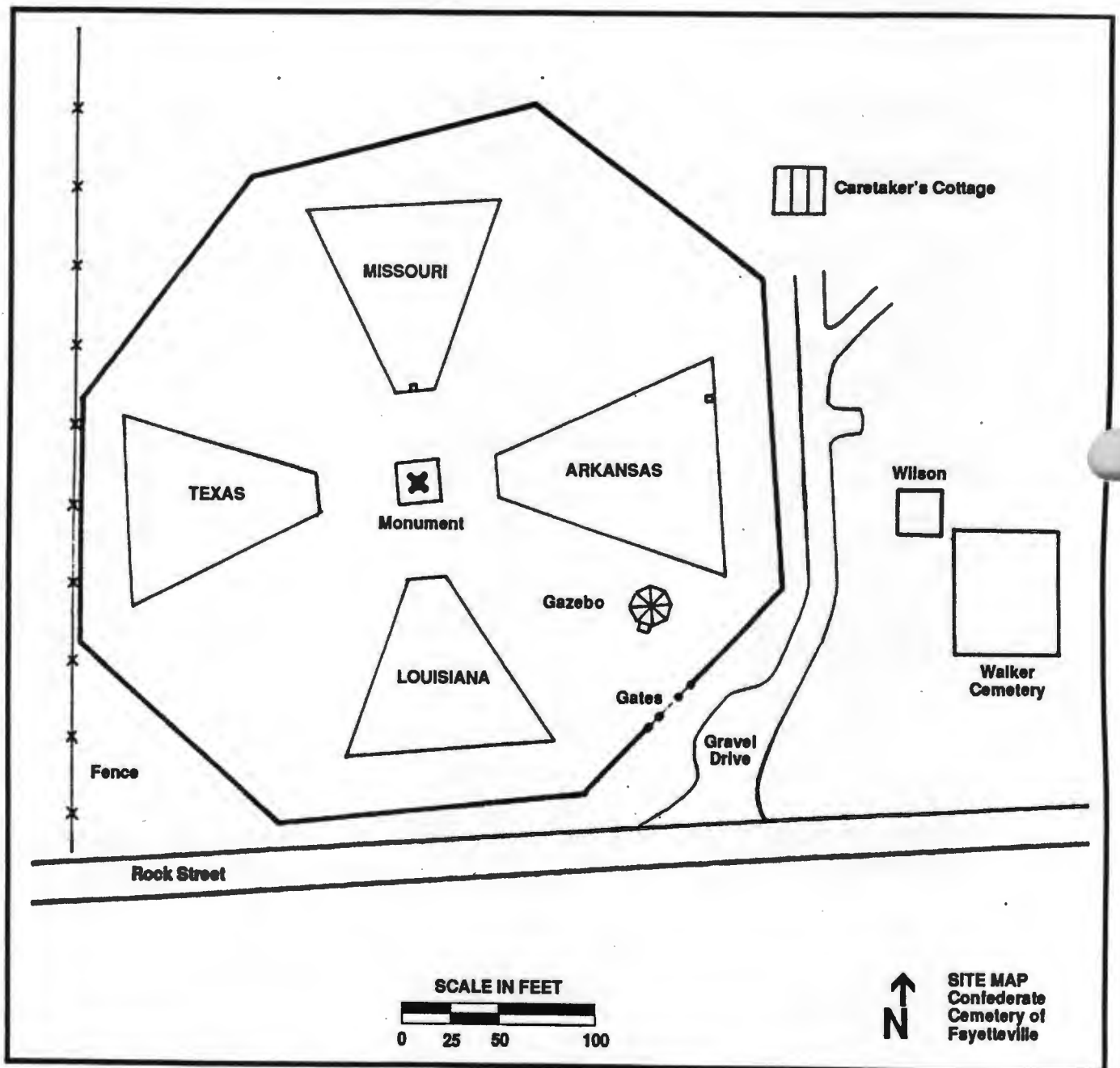
Galloway, Rowena, "They Buildded a Monument," Flashback, Vol. II, No. 3, May 1958, Page 3, Washington County Historical Society.

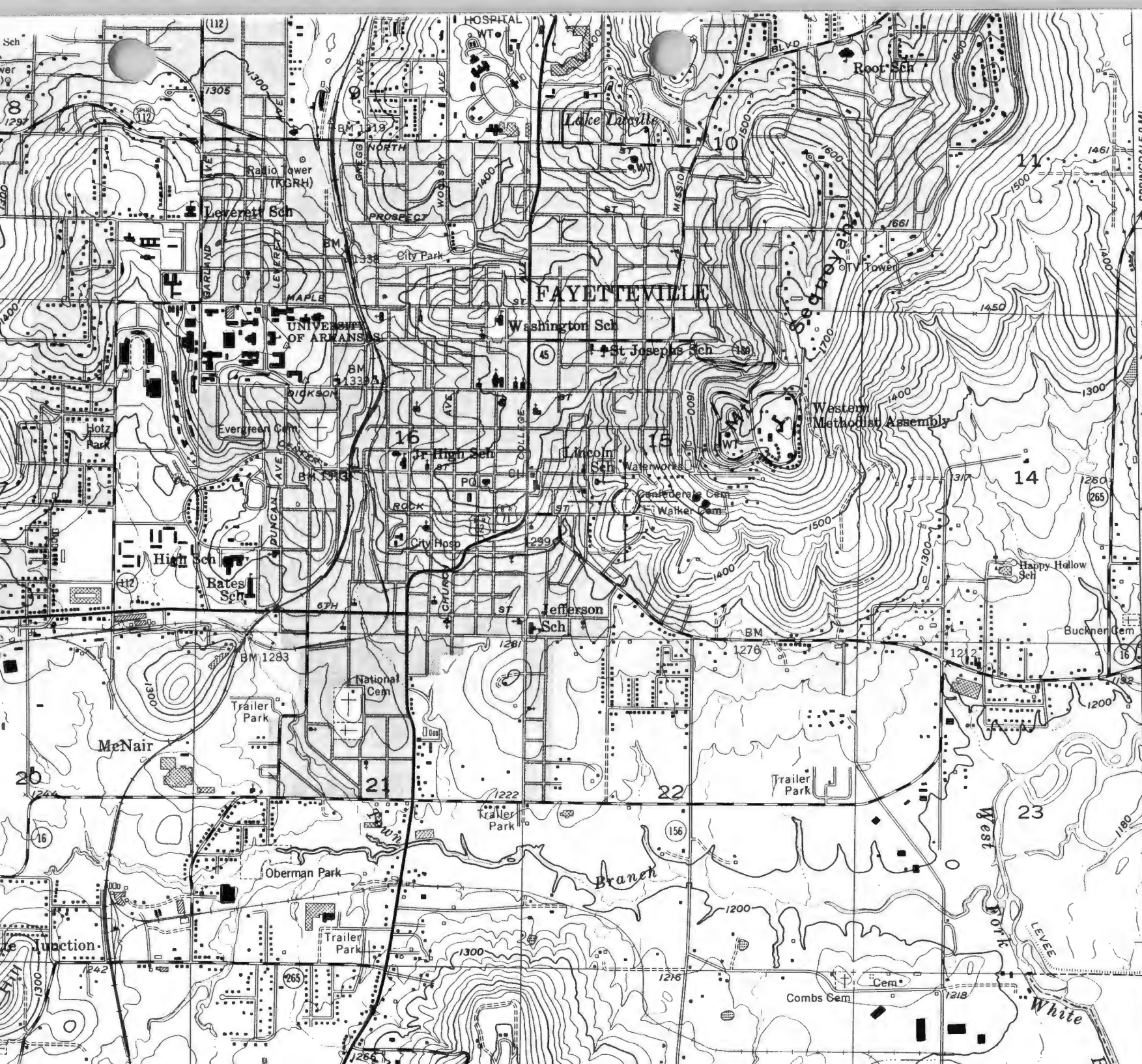
"The Goodspeed Biographical and Historical Memoirs of Northwestern Arkansas," The Goodspeed Publishing Co., Chicago, 1889

Interview, Ms. Juel Giles, October 26, 1992.

Interview, Ms. Shirley Hamblin, January 25, 1993.

McAlester, Virginia and Lee McAlester. A Field Guide to American Houses. (New York, Alfred A. Knopf, 1984).





SPRINGDALE 9 MI.

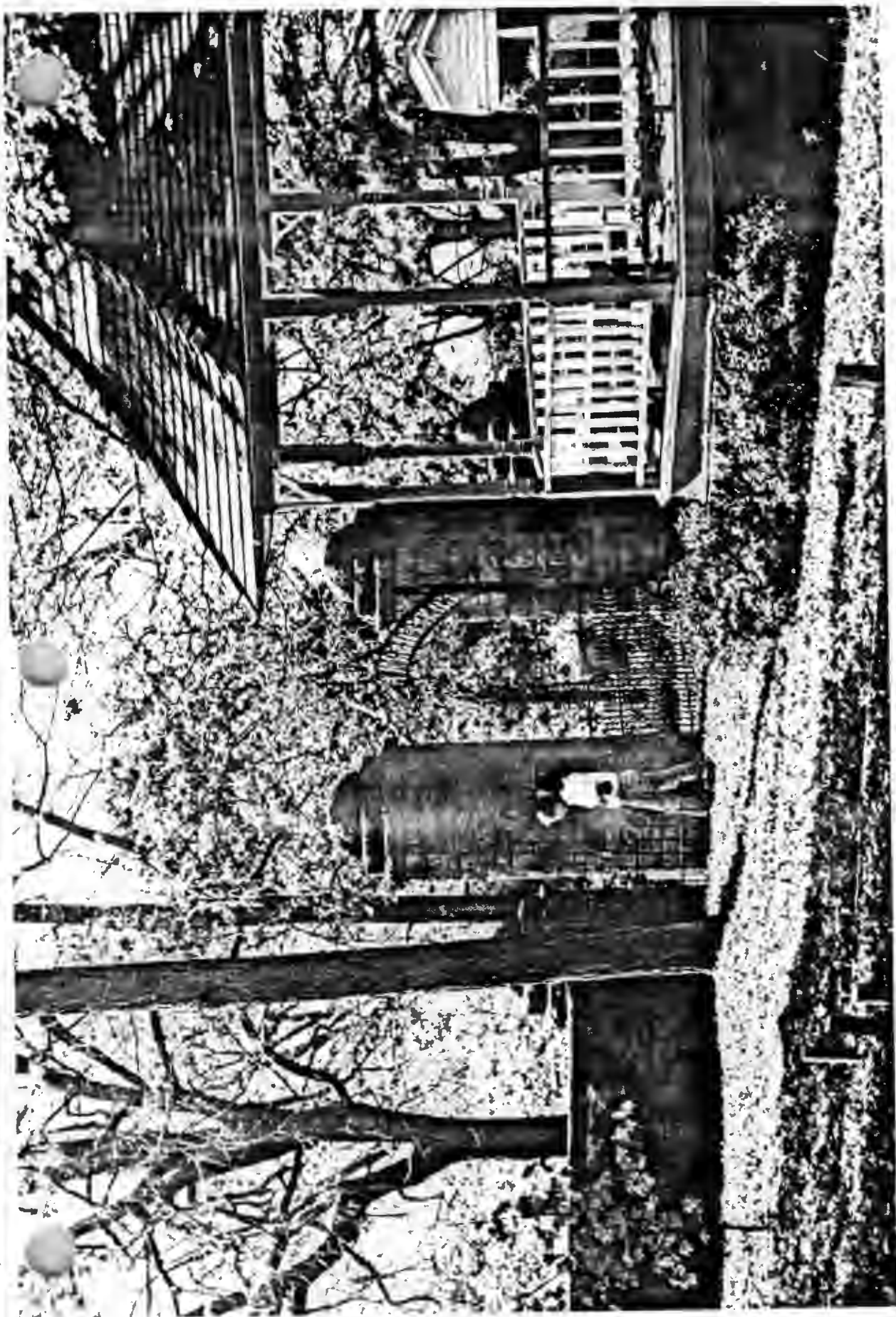
FAYETTEVILLE  
CONFEDERATE  
CEMETERY  
FAYETTEVILLE,  
WASHINGTON Co.,  
ARKANSAS

15/396220/3991150

BALDWIN 1.8 MI.  
BRASHEARS 31 MI.

2'30"







Fayetteville Confederate Cemetery  
Fayetteville, Washington County, Arkansas  
Photos by Patricia Zollner  
10-27-92  
Negative on file at AHP  
View from Northwest



Fayetteville (antelope) Cemetery  
Fayetteville, Washington County, Arkansas  
Photo by Patrick Zollner  
10-27-92  
Negative on file at AHPP  
View from North west

WILKINS

ERECTED BY THE  
SOUTHERN MEMORIAL ASSOCIATION  
OF WASHINGTON, D. C. ARK.

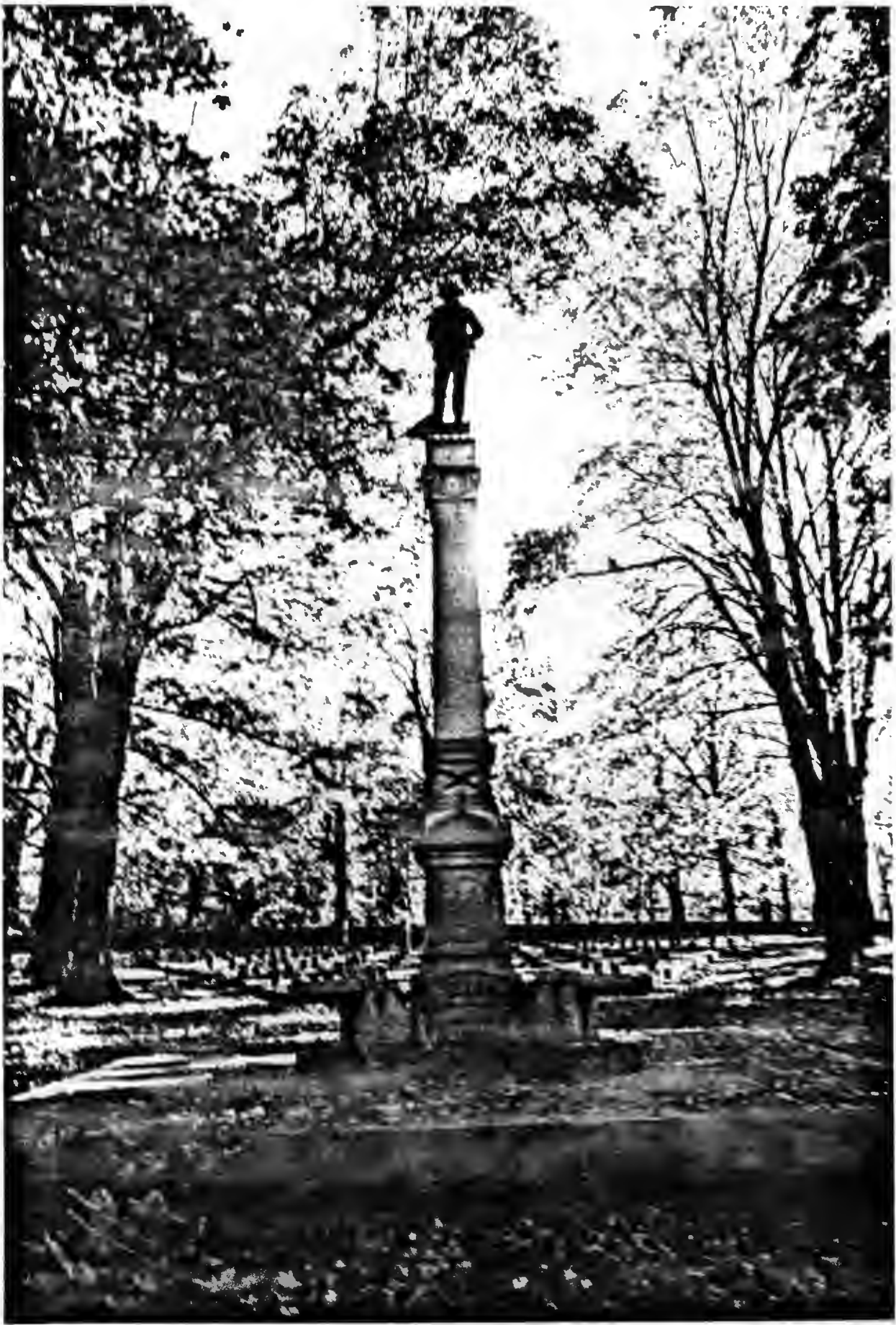
A. D. 1911

• Fayetteville Confederate Cemetery  
Fayetteville, Washington County, Arkansas  
Photo by Patrick Zollner

10-27-92

Negative on file at AHP  
View from East







Fayetteville Confederate Cemetery  
Fayetteville, Washington County, Arkansas  
Photo by Patrick Zollner  
10-27-92  
Negative on file at AHP  
View from West

OLD FORD BOUNDS  
SHELLEY ROAD  
AT THE BATTLE OF  
ELKHORN  
WILLIAM YARNELL SLACK  
BRIG GEN. 2 BRIG. MO STATE C  
CONFEDERATE STATES ARMY  
AUG 6 1862 MAR 20 1863

Fayetteville Confederate Cemetery  
Fayetteville, Washington County, Arkansas  
Photo by Patrick Zollner  
10-27-92  
Negative on file at AHP  
View from South



Fayetteville Confederate Cemetery  
Fayetteville, Washington County, Arkansas  
Photo by Patrick Zollner  
10-27-92  
Negative on file at AHP  
View from North



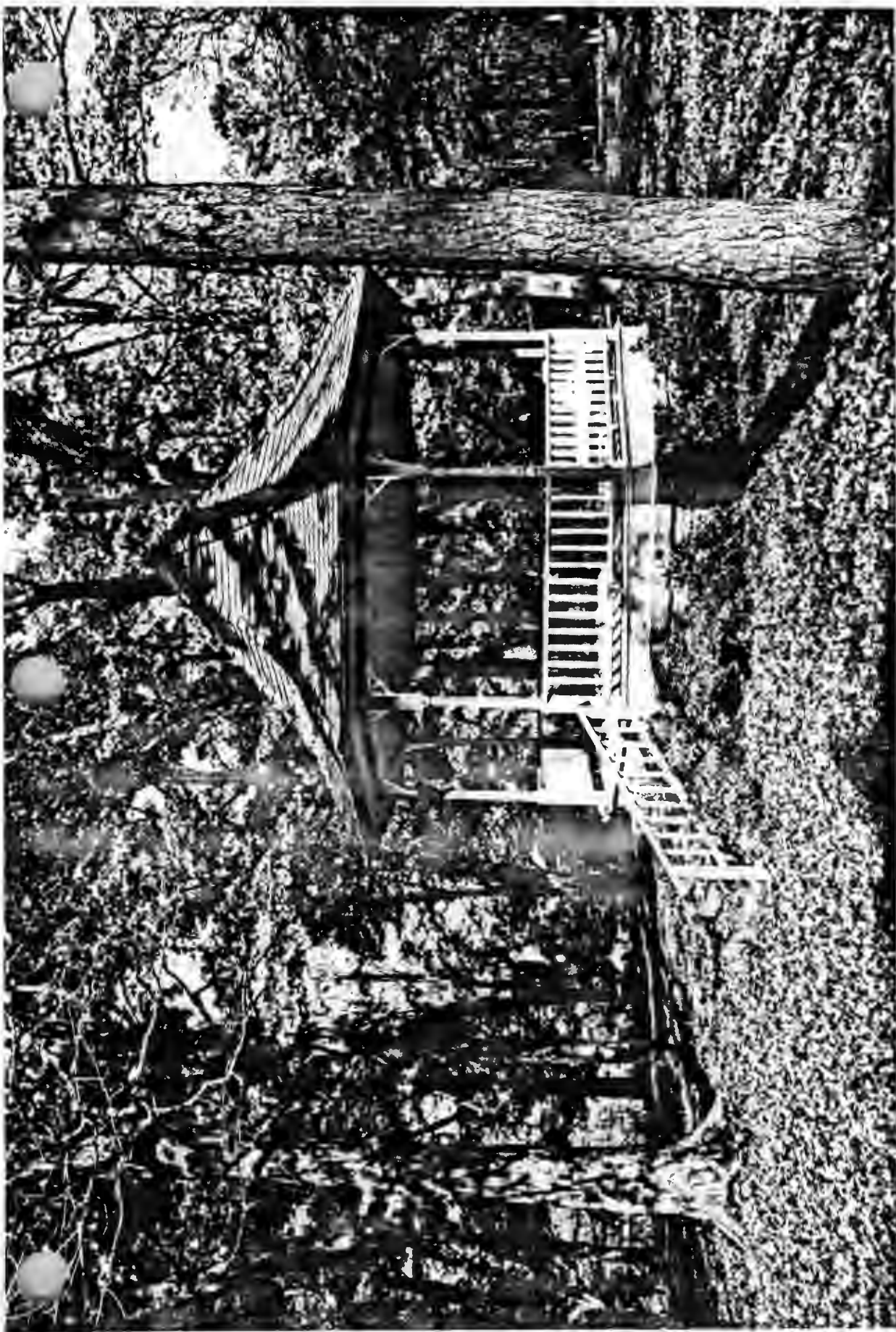




Fayetteville Confederate Cemetery  
Fayetteville, Washington County, Arkansas  
Photo by Patrick Zollner  
10-27-92  
Negative on file at AHPP  
View from West



Fayetteville Confederate Cemetery  
Fayetteville, Washington County, Arkansas  
Photo by Patrick Zollner  
10-27-92  
Negative on file at AHP  
View from southeast

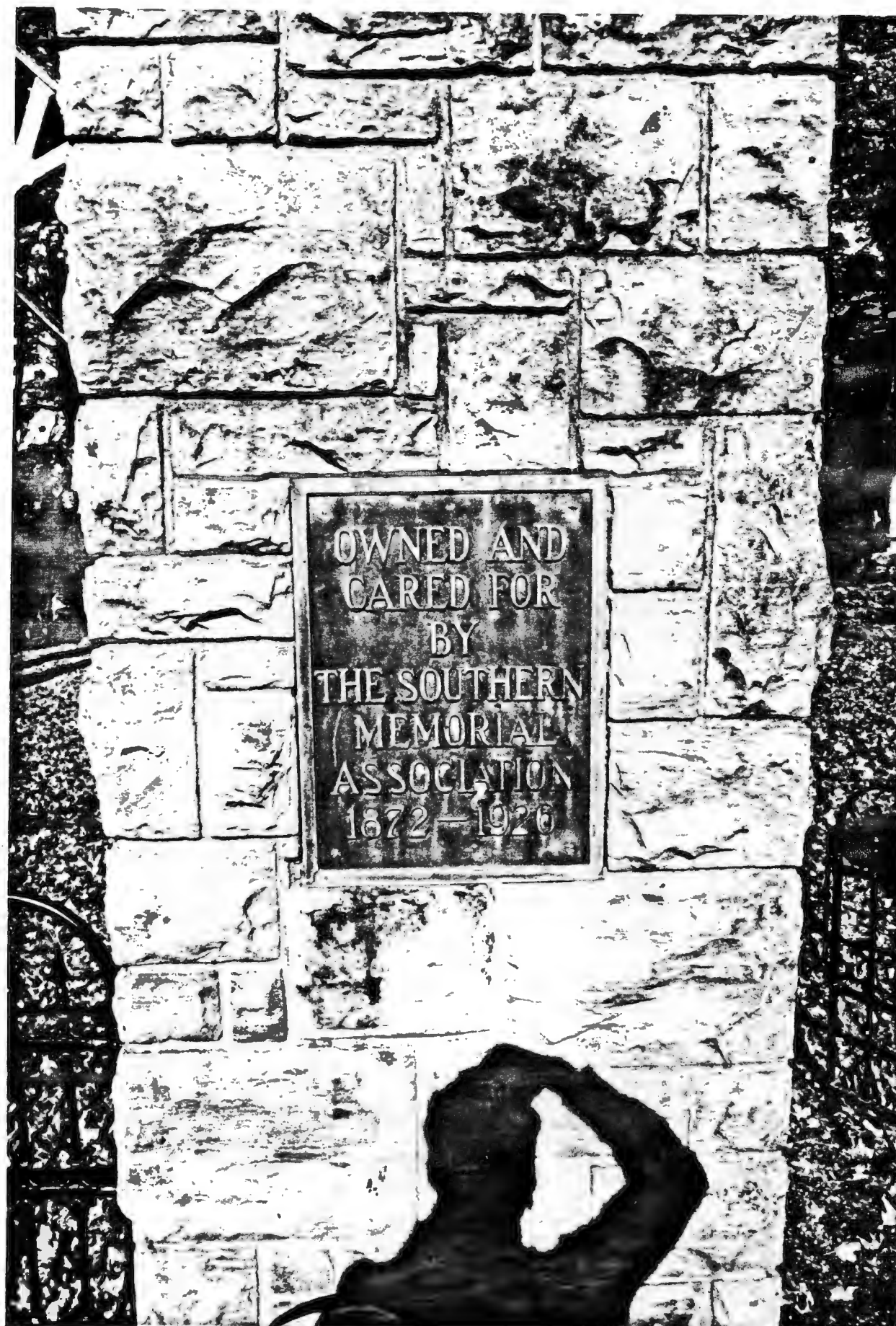


Fayetteville, Confederate Cemetery  
Fayetteville, Washington County, Arkansas  
Photo by Patrick Zollner

10-27-92

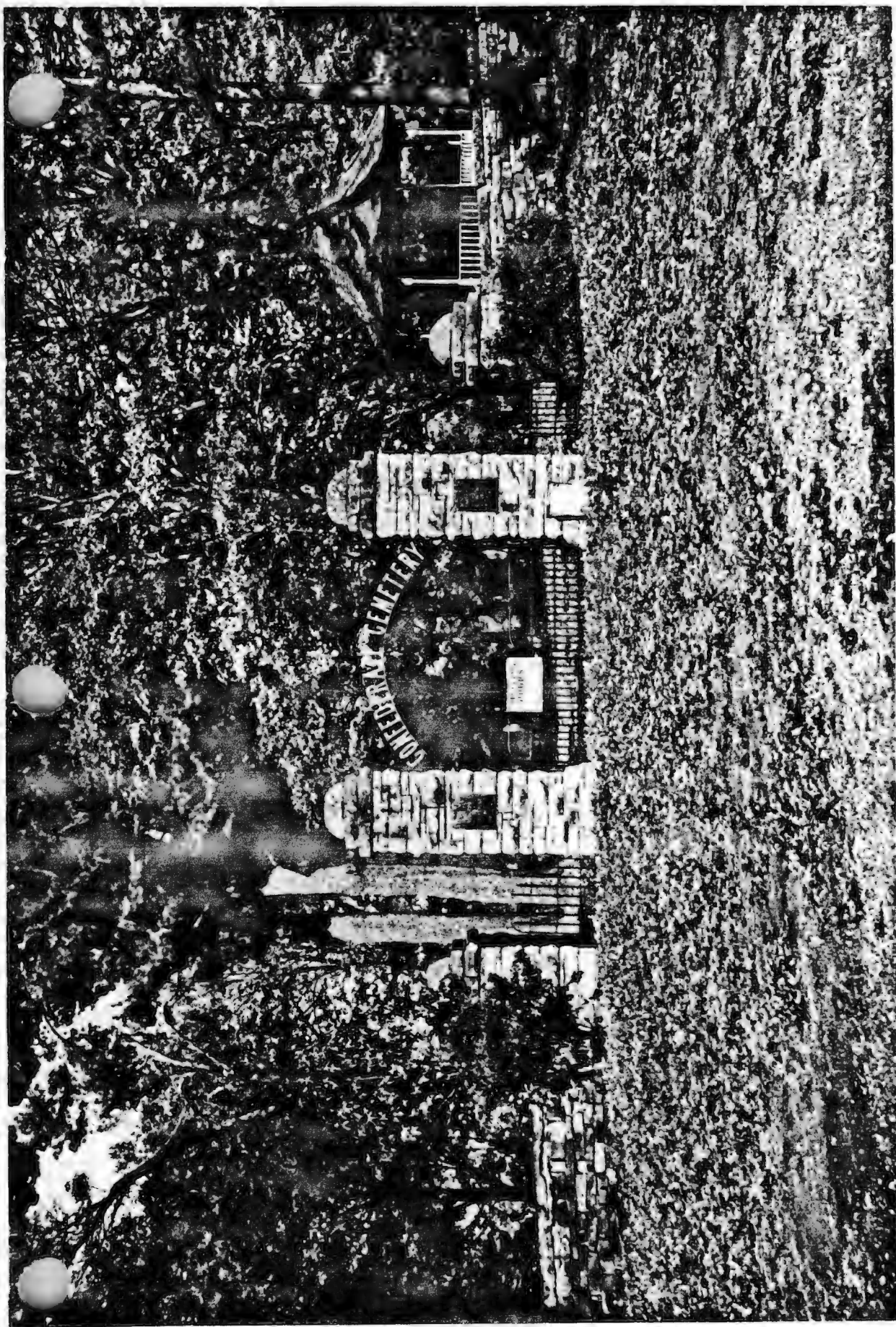
Negative on file at AHP  
View from southeast







Fayetteville Confederate Cemetery  
Fayetteville, Washington County, Arkansas  
Photo by Patrick Zollner  
10-27-92  
Negative on file at AHP  
View from southeast



Fayetteville Confederate Cemetery  
Fayetteville, Washington County, Arkansas  
Photo by Patrick Zollner  
10-27-92  
Negative on file at AHP  
View from southeast