

Book Copy

United States Department of the Interior
National Park Service

NR LISTED

APR 26 1996

NATIONAL REGISTER OF HISTORIC PLACES
REGISTRATION FORM

===== AHPP =====
1. Name of Property

historic name: El Dorado Confederate Monument

other name/site number: UN0161S

===== 2. Location =====

street & number: Courthouse Lawn (at the courthouse's southwest corner,
near the intersection of N. Main St. and S. Washington)

not for publication: N/A

city/town: El Dorado vicinity: N/A

state: AR county: Union code: AR 139 zip code: 71730

===== 3. Classification =====

Ownership of Property: Public-local

Category of Property: Object

Number of Resources within Property:

Contributing	Noncontributing	
_____	_____	buildings
_____	_____	sites
_____	_____	structures
<u>1</u>	_____	objects
<u>1</u>	<u>0</u>	Total

Number of contributing resources previously listed in the National Register: N/A

Name of related multiple property listing: "Something So Dim It Must Be Holy:" Civil War Commemorative Sculpture in Arkansas, 1886-1934

=====

4. State/Federal Agency Certification

=====

As the designated authority under the National Historic Preservation Act of 1986, as amended, I hereby certify that this X nomination _____ request for determination of eligibility meets the documentation standards for registering properties in the National Register of Historic Places and meets the procedural and professional requirements set forth in 36 CFR Part 60. In my opinion, the property X meets _____ does not meet the National Register Criteria. _____ See continuation sheet

Cathryn A. Slater _____ 3-12-96
Signature of certifying official Date

Arkansas Historic Preservation Program
State or Federal agency and bureau

In my opinion, the property X meets _____ does not meet the National Register criteria. _____ See continuation sheet.

Signature of commenting or other official Date

State or Federal agency and bureau

=====

5. National Park Service Certification

=====

I, hereby certify that this property is:

_____ entered in the National Register _____
_____ See continuation sheet.

_____ determined eligible for the _____
National Register _____
_____ See continuation sheet.

_____ determined not eligible for the _____
National Register _____

_____ removed from the National Register _____

_____ other (explain): _____

Signature of Keeper Date
of Action

=====

6. Function or Use

=====

Historic: RECREATION AND CULTURE Sub: Monument/marker

Current: RECREATION AND CULTURE Sub: Monument/marker

=====
7. Description
=====

Architectural Classification:

eclassical

Other Description: N/A

Materials: foundation STONE/Marble roof N/A
 walls STONE/Marble other _____

Describe present and historic physical appearance. ___ See continuation sheet.

Summary

The El Dorado Confederate Monument is located on the southwest corner of the lawn of the Union County Courthouse at South Washington and North Main Streets. It consists of a male uniformed Confederate soldier in mid-stride on top of a four-columned classic temple structure. Inside the temple is a fountain, which is no longer in operation. The figure, which stands 76"x28"x28", is hatted and carries a bayoneted rifle at shoulder arms in his proper right hand. His proper left foot is in partial stride to the rear and a tree form reinforces the proper right leg. A bed roll is draped from his proper left shoulder and slung under his proper right arm, and a canteen is attached to his belt on the proper left front. The structure, with dimensions of 15'x10'x10', has a two-tiered base with a cannon-shaped Ionic column at each corner rising to the inscribed lintels. The lintels are surmounted with a tiered roof decorated with a cannonball at each corner. The entire monument is made of gray/blue striated marble.

Elaboration

The El Dorado Confederate Monument is located on the southwest corner of the lawn of the Union County Courthouse at South Washington and North Main Streets. It consists of a male uniformed Confederate soldier in mid-stride on top of a four-columned classic temple structure. Inside the temple is a fountain, which is no longer in operation. The figure, which stands 76"x28"x28", is hatted and carries a bayoneted rifle at shoulder arms in his proper right hand. His proper left foot is in partial stride to the rear and a tree form reinforces the proper right leg. A bed roll is draped from his proper left shoulder and slung under his proper right arm, and a canteen is attached to his belt on the proper left front. The structure, with dimensions of 15'x10'x10', has a two-tiered base with a cannon-shaped Ionic column at each corner rising to the inscribed lintels. The lintels are surmounted with a tiered roof decorated with a cannonball at each corner. The entire monument is made of gray/blue striated marble.

The front lintel, on the south side of the monument, is inscribed "CSA / 1861-1865 / ERECTED BY THE HENRY G. BUNN CHAPTER / UNITED DAUGHTERS OF THE CONFEDERACY / 1909."

The rear lintel, on the north side, is marked "'TRUTH CRUSHED TO EARTH SHALL

RISE AGAIN.' / 'EVEN DEATH CANNOT SEVER THE CORDS OF MEMORY.'"

The west lintel contains the inscription "'IN HONOR OF THE CONFEDERATE SOLDIERS / OF UNION COUNTY, ARK.'"

There is a pair of crossed swords on the east lintel.

Both the sculpture and the base of the monument suffer from bird guano, black crusts, and organic growth. The figure seems to have lost some detail due to prior cleaning. A 1993 SOS! survey recommends that the monument would benefit from treatment.

=====
8. Statement of Significance
=====

Certifying official has considered the significance of this property in relation to other properties: Statewide.

Applicable National Register Criteria: A

Criteria Considerations (Exceptions): F

Areas of Significance: SOCIAL HISTORY

Period(s) of Significance: 1910

Significant Dates: 1910

Significant Person(s): N/A

Cultural Affiliation: N/A

Architect/Builder: Unknown

State significance of property, and justify criteria, criteria considerations, and areas and periods of significance noted above.
___ See continuation sheet.

Summary Criterion A, statewide significance
 Criterion Consideration F

The El Dorado Confederate Monument is associated with the historic context "Something So Dim It Must Be Holy": Civil War Commemorative Sculpture in Arkansas, 1886-1934 as a commemorative monument financed and erected through the efforts of an ancestral organization in Arkansas. As such, it is eligible under Criterion A with statewide significance for its associations with the efforts of the Henry G. Bunn Chapter of the United Daughters of the Confederacy to reflect members' perception of the noble character and valor of their veterans and their cause. Thus, it also meets the eligibility requirements of Criteria Consideration F: Commemorative Properties.

Elaboration

The El Dorado Confederate Monument was erected at a cost of over \$2,850 by the Henry G. Bunn Chapter of the United Daughters of the Confederacy in honor of Union County's Confederate dead. It was dedicated on Monday March 21, 1910, as part of a ceremony that included music, prayers, and speeches, with the Hon. John H. Hineman of Arkadelphia as the featured orator. Its design is very unusual; it is believed to be the first such "memorial fountain" to be erected in the South. The Arkansas U.D.C. book Confederate Monuments and Markers in Arkansas explains the symbolism of the fountain: "the cool crystal water was intended to denote the calm steadfast purity of purpose of the sons of the South in the great war, while the freedom of the waters' flow and its' enlivening healing nature served to typify the loving stream of blood that was forced to flow ere the land of these immured here was compelled to bow to the superior force, wealth and strength of the invader."

The El Dorado Confederate Monument is associated with the historic context "Something So Dim It Must Be Holy": Civil War Commemorative Sculpture in Arkansas, 1886-1934 as a commemorative monument financed and erected through the efforts of an ancestral organization in Arkansas. As such, it is eligible under Criterion A with statewide significance for its associations with the efforts of the Henry G. Bunn Chapter of the United Daughters of the Confederacy to reflect members' perception of the noble character and valor of their veterans and their cause. Thus, it also meets the eligibility requirements of Criteria Consideration F: Commemorative Properties.

=====

9. Major Bibliographical References

=====

"Confederate Monuments and Markers in Arkansas," Arkansas Division U.D.C., 1960, p. 63-65.

The Huttig News, March 19, 1910, p. 1.

___ See continuation sheet.

Previous documentation on file (NPS):

- preliminary determination of individual listing (36 CFR 67) has been requested.
- previously listed in the National Register
- previously determined eligible by the National Register
- designated a National Historic Landmark
- recorded by Historic American Buildings Survey # _____
- recorded by Historic American Engineering Record # _____

Primary Location of Additional Data:

- X State historic preservation office
- Other state agency
- Federal agency
- Local government
- University
- Other -- Specify Repository: _____

=====

10. Geographical Data

=====

Acreage of Property: Less than one

TM References:	Zone	Easting	Northing	Zone	Easting	Northing
A	<u>15</u>	<u>531370</u>	<u>3674630</u>	B	<u>15</u>	<u> </u>
C	<u>15</u>	<u> </u>	<u> </u>	D	<u>15</u>	<u> </u>

 See continuation sheet.

Verbal Boundary Description: See continuation sheet.

An area around the monument defined by a 25 foot radius centered on the monument itself.

Boundary Justification: See continuation sheet.

This boundary includes all the property historically associated with this resource.

=====

11. Form Prepared By

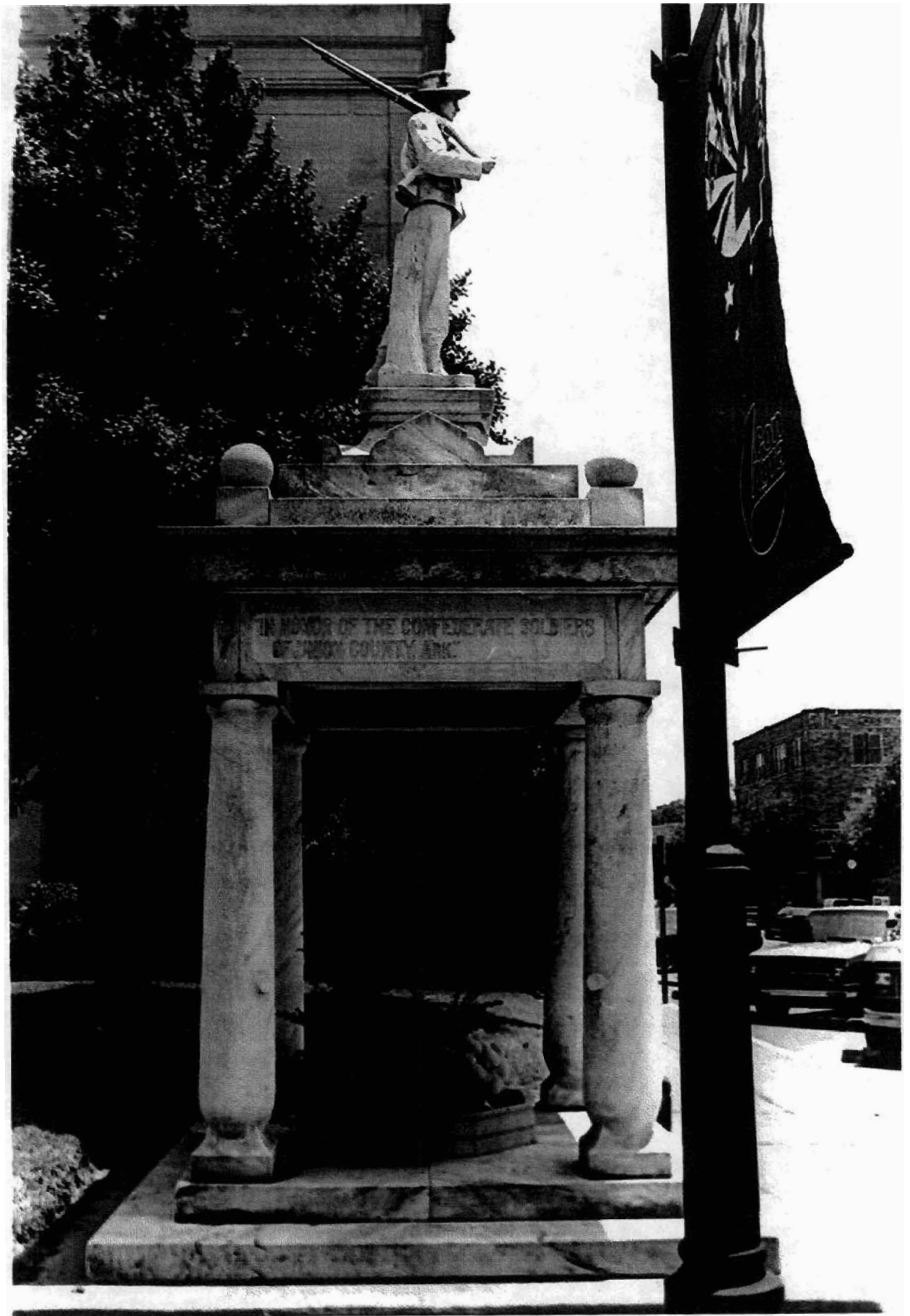
=====

Name/Title: John Slater, Special Projects Intern/AHPP Staff

Organization: Arkansas Historic Preservation Program Date: 03/08/96

Street & Number: 323 Center Street, Suite 1500 Telephone: (501) 324-9880

City or Town: Little Rock State: AR Zip: 72201

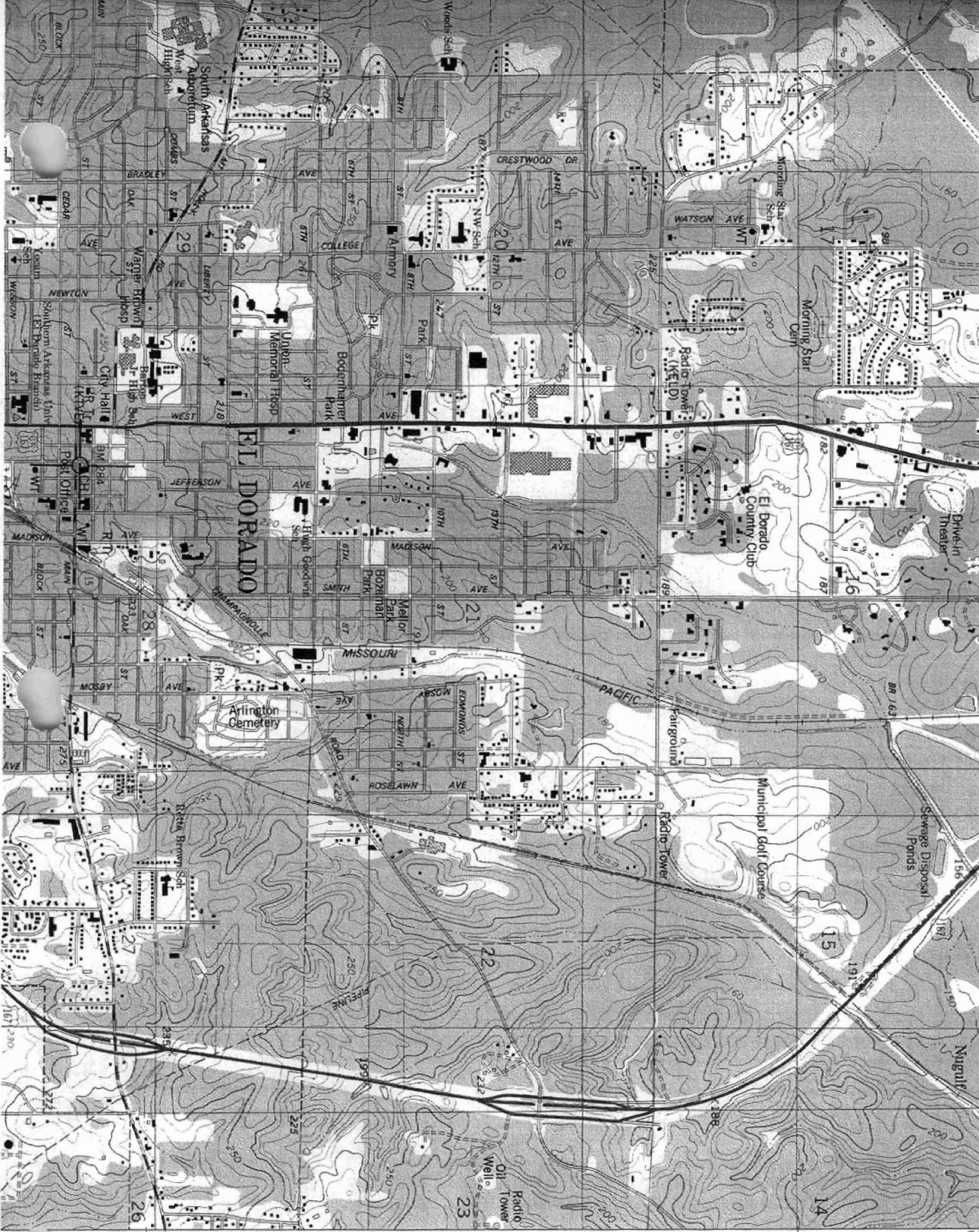


ARKANSAS-UNION CO.
7.5 MINUTE SERIES (TOPOGRAPHIC)

NW/4 EL DORADO 15' QUADRANGLE

7100 1 SE
(CALON)

30 40' 92 1 800 000 FEET 93 94 92°37'30" 33°15'



210 000
FEET

OLD UNION 5 MI
WARREN 46 MI
15
EL DORADO
CONFEDERATE
MONUMENT
UNION CO., A
15/531370/
3674630