

NR Listed 9/11/95
Book Copy

United States Department of the Interior
National Park Service

NATIONAL REGISTER OF HISTORIC PLACES
REGISTRATION FORM

1. Name of Property

historic name: Sugarloaf Fire Tower Historic District; Ozark-St. Francis
National Forest

other name/site number: ST0285

2. Location

street & number: End of Forest Service Road 1123

not for publication: N/A

city/town: Calico Rock

vicinity: X

state: AR county: Stone code: AR 137

zip code: 72519

3. Classification

Ownership of Property: Public-Federal

Category of Property: District

Number of Resources within Property:

Contributing	Noncontributing	
<u>4</u>	<u>1</u>	buildings
<u>1</u>	<u>1</u>	sites
<u>1</u>	<u>1</u>	structures
<u>5</u>	<u>1</u>	objects
	<u>1</u>	Total

Number of contributing resources previously listed in the National Register: N/A

Name of related multiple property listing: Facilities Constructed by the
Civilian Conservation Corps in Arkansas, 1933-1942

=====

4. State/Federal Agency Certification

=====

As the designated authority under the National Historic Preservation Act of 1986, as amended, I hereby certify that this X nomination _____ request for determination of eligibility meets the documentation standards for registering properties in the National Register of Historic Places and meets the procedural and professional requirements set forth in 36 CFR Part 60. In my opinion, the property X meets _____ does not meet the National Register Criteria. _____ See continuation sheet.

Signature of certifying official

Date

State or Federal agency and bureau

In my opinion, the property X meets _____ does not meet the National Register criteria. _____ See continuation sheet.

Arthur W. Statu
Signature of commenting or other official

9-20-93
Date

Arkansas Historic Preservation Program

State or Federal agency and bureau

=====

5. National Park Service Certification

=====

I, hereby certify that this property is:

_____ entered in the National Register _____

_____ See continuation sheet.

_____ determined eligible for the _____
National Register

_____ See continuation sheet.

_____ determined not eligible for the _____
National Register

_____ removed from the National Register _____

_____ other (explain): _____

Signature of Keeper

Date
of Action

=====

6. Function or Use

=====

Historic: OTHER

Sub: Fire tower

Current : VACANT/NOT IN USE

Sub: _____

=====

7. Description

=====

Architectural Classification:

Other _____

Other Description: Rustic Resort

Materials: foundation Stone/Concrete roof Asphalt
walls Stone/Wood other Steel tower framing

Describe present and historic physical appearance. X See continuation sheet.

=====

8. Statement of Significance

=====

Certifying official has considered the significance of this property in relation to other properties: Locally.

Applicable National Register Criteria: A, C

Criteria Considerations (Exceptions): N/A

Areas of Significance: SOCIAL HISTORY
ARCHITECTURE
CONSERVATION

Period(s) of Significance: 1937-1942

Significant Dates: N/A

Significant Person(s): N/A

Cultural Affiliation: N/A

Architect/Builder: Civilian Conservation Corps

State significance of property, and justify criteria, criteria considerations, and areas and periods of significance noted above.
X See continuation sheet.

9. Major Bibliographical References

See "Facilities Constructed by the Civilian Conservation Corps in Arkansas, 1933-1942," Section H.

___ See continuation sheet.

Previous documentation on file (NPS):

- ___ preliminary determination of individual listing (36 CFR 67) has been requested.
- ___ previously listed in the National Register
- ___ previously determined eligible by the National Register
- ___ designated a National Historic Landmark
- ___ recorded by Historic American Buildings Survey # _____
- ___ recorded by Historic American Engineering Record # _____

Primary Location of Additional Data:

- X State historic preservation office
- ___ Other state agency
- ___ Federal agency
- ___ Local government
- ___ University
- ___ Other -- Specify Repository: _____

10. Geographical Data

Acreage of Property: Approximately two

UTM References: Zone Easting Northing Zone Easting Northing

A 15 575340 3993380

___ See continuation sheet.

Verbal Boundary Description: ___ See continuation sheet.

Beginning at a point formed by the intersection of a line running parallel with the eastern elevation of the fire tower and located 50 feet to the east thereof with a perpendicular line running parallel with the privy's northern elevation and located 50 feet to the north thereof, proceed westerly along latter line for a distance of approximately 400 feet to its intersection with a perpendicular line running parallel with the western elevation of the storage cellar/storm shelter; thence proceed southerly along said line for a distance of approximately 200 feet to its intersection with a perpendicular line running parallel with the residence's southern elevation; thence proceed easterly along said line for a distance of approximately 400 feet to its intersection with a perpendicular line running parallel with the eastern elevation of the fire tower; thence proceed northerly along said line for a distance of approximately 200 feet to the point of beginning.

Boundary Justification: ___ See continuation sheet.

This boundary includes the historic resources, the end of the Forest Service Road leading into the complex (which effectively serves as a driveway) and a representative amount of the historically-associated surrounding property.

=====

11. Form Prepared By

=====

Name/Title: Kenneth Story, Architectural Historian

Organization: Arkansas Historic Preservation Program Date: August 30, 1993

Street & Number: 323 Center Street, Suite 1500 Telephone: (501) 324-9880

City or Town: Little Rock State: AR ZIP: 72201

**United States Department of the Interior
National Park Service****National Register of Historic Places
Continuation Sheet**Section number 7 Page 1**Description**

The Sugarloaf Fire Tower Historic District (Ozark-St. Francis National Forest) is composed of five contributing resources and one non-contributing resource, all of which comprise a forest fire observation center located strategically on a two-acre site atop Sugarloaf Mountain (elevation 1,150 feet). Accessed from State Highway #5 by Forest Service Road #1123, the five building complex is anchored by the central, hipped-roof fire tower that rises one hundred feet from base to top. As was typical for such construction during this period, the tower itself consists of a braced metal frame, pyramidal in shape, that supports the enclosed, wood frame and glass observation structure from which the fire ranger could view the surrounding landscape in all directions. Surrounding it are the single-story, wood frame and stone veneer residence and privy, and the vaulted stone storage cellar/storm shelter. The residence features a simple, rectangular plan with the single entrance located at the northern end of the western elevation and a single stone chimney rising through the southern slope of the gable roof. An original well is located adjacent to the building's northwest corner. The privy is unique in that its design includes a chimney for incinerating the waste, a feature not commonly found in extant CCC construction in Arkansas. The combination storage cellar/storm shelter is also uncommon in that its vaulted ceiling is formed from stones cut into voussoirs that are laid over a reinforced concrete core. It features a low stair and stoop that provides access to the front door and a single, central window opening at the back. The non-contributing structure is a single-story, shed roof, concrete block storage building located just to the east of the tower.

United States Department of the Interior
National Park ServiceNational Register of Historic Places
Continuation SheetSection number 8 Page 1

Significance

The five contributing resources that comprise the Sugarloaf Fire Tower Historic District (Ozark-St. Francis National Forest) were constructed in 1937 by the enrollees of the 743rd Company of the Civilian Conservation Corps (CCC), Arkansas District, working out of Camp Hedges in Calico Rock, Arkansas. Camp Hedges -- established for the purpose of providing manpower for projects within the northern ranger districts of what was then the Ozark National Forest -- was a typical CCC camp in that it sheltered approximately 200 enrollees who worked out of Camp Hedges itself and at least two known side camps (side camps were composed of small units of enrollees who were assigned to a temporary campsite away from the main camp for the purpose of completing a specific project located too far from the main camp for a daily commute). As a fire control facility constructed by the CCC it represents a property type associated with the historic context *Facilities Constructed by the Civilian Conservation Corps in Arkansas, 1933-1942*. It was constructed upon this elevated site to function as a fire and observation tower to help prevent the forest fires that heretofore had ravaged the forest with devastating effect. However, as a property type it is relatively unusual as it also includes such residential support facilities for the fire ranger as a residence and well, a privy, and a combination provision storage and storm shelter structure. As such, the Sugarloaf Fire Tower Historic District remains locally significant under Criterion A through its associations with the contributions to American social history made by the Civilian Conservation Corps and its associations with the emphasis upon conservation of our natural resources that was the original mandate of the CCC. It is also significant under Criterion C by virtue of its status as an excellent example of the typical Rustic style CCC architecture in a remarkable state of preservation and as an intact fire control/residential complex.

Sugarloaf Fire Tower Historic District

Calico Rock vic., Stone County, Arkansas

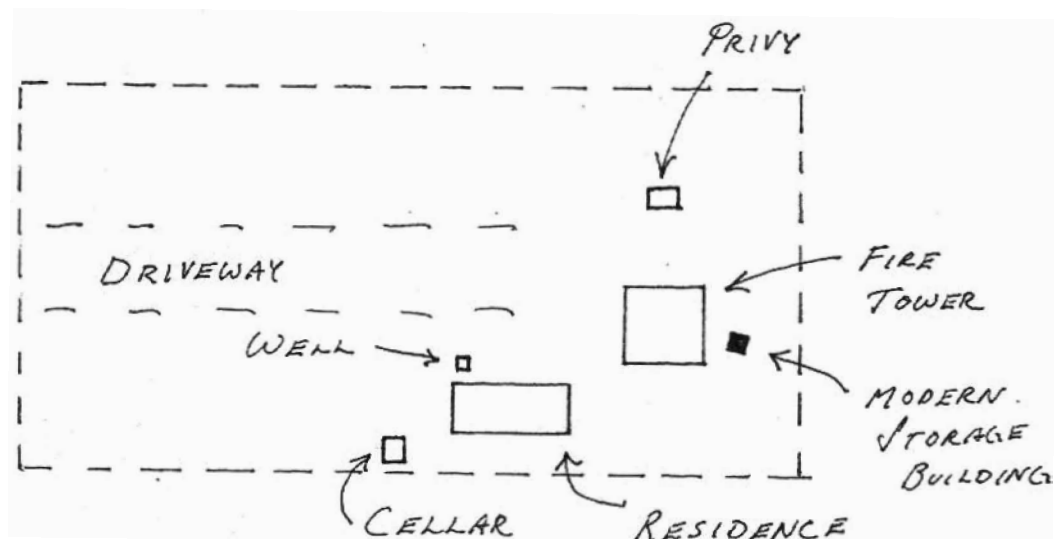
Approximate Scale: 1" = 100'

Boundary: - - - - -

Contributing Resources:

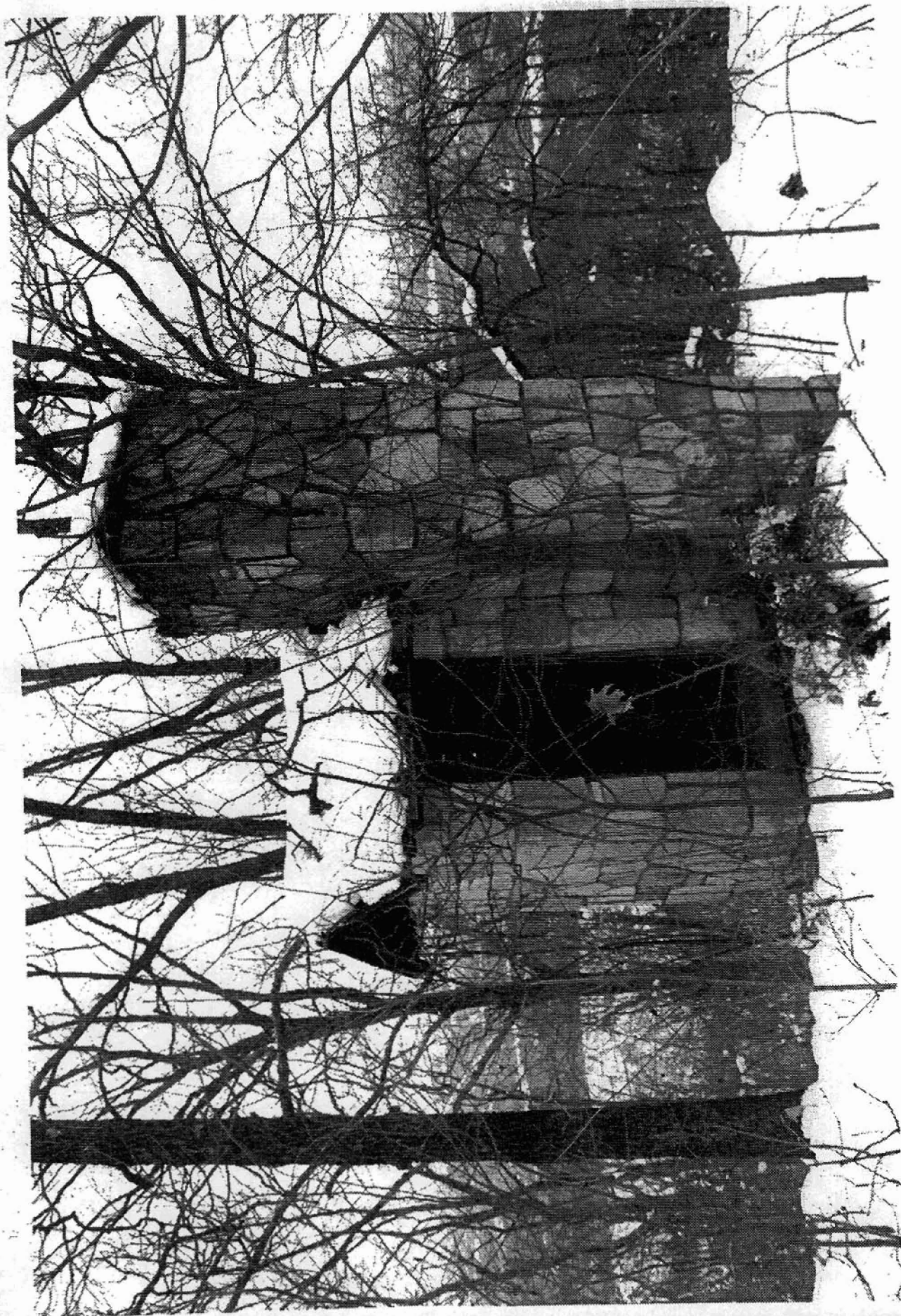


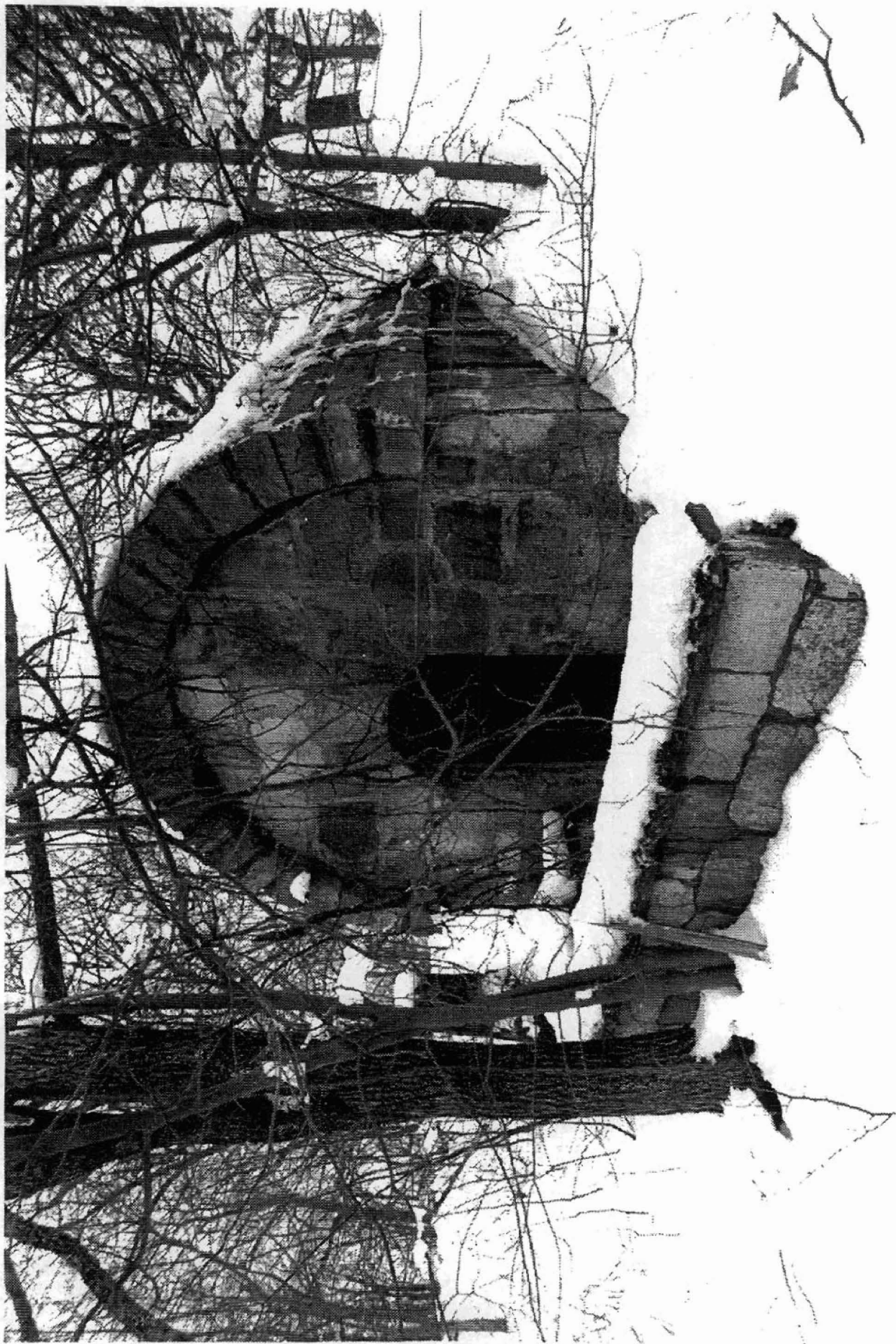
Non-Contributing Resources:











CALICO ROCK QUADRANGLE
ARKANSAS
7.5 MINUTE SERIES (TOPOGRAPHIC)

7556 II NE
(PINEVILLE)

MOUNTAIN HOME 27 MI. NORFOLK 13 MI. 1 960 000 FEET ASH FLAT 35 MI. 92°07'30" 36°07'30"



SUGARLOAF FIRE
TOWER HISTORIC
DISTRICT
CALICO ROCK VIC.,
STONE CO.,
ARKANSAS
15/575340/3993380