

United States Department of the Interior  
National Park Service

# National Register of Historic Places Registration Form

This form is for use in nominating or requesting determinations for individual properties and districts. See instructions in National Register Bulletin, *How to Complete the National Register of Historic Places Registration Form*. If any item does not apply to the property being documented, enter "N/A" for "not applicable." For functions, architectural classification, materials, and areas of significance, enter only categories and subcategories from the instructions.

### 1. Name of Property

Historic name: Lee Grocery Store

Other names/site number: Site #PH0571

Name of related multiple property listing: Historic and Architectural Resources Associated with the Ethnic and Racial Minority Settlement of the Arkansas Delta

(Enter "N/A" if property is not part of a multiple property listing)

### 2. Location

Street & number: 100 Main Street

City or town: Elaine State: AR County: Phillips

Not For Publication:  Vicinity:

### 3. State/Federal Agency Certification

As the designated authority under the National Historic Preservation Act, as amended,

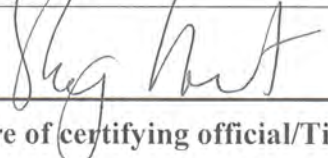
I hereby certify that this X nomination     request for determination of eligibility meets the documentation standards for registering properties in the National Register of Historic Places and meets the procedural and professional requirements set forth in 36 CFR Part 60.

In my opinion, the property X meets     does not meet the National Register Criteria. I recommend that this property be considered significant at the following level(s) of significance:

    national     statewide X local

Applicable National Register Criteria:

X A     B     C     D

 <hr/> <b>Signature of certifying official/Title:</b> <u>Arkansas Historic Preservation Program</u> <b>State or Federal agency/bureau or Tribal Government</b>	<u>10-22-19</u> <hr/> <b>Date</b>
--	--------------------------------------

In my opinion, the property <u>   </u> meets <u>   </u> does not meet the National Register criteria.	
<hr/> <b>Signature of commenting official:</b>	<hr/> <b>Date</b>
<hr/> <b>Title :</b>	<hr/> <b>State or Federal agency/bureau or Tribal Government</b>

Lee Grocery Store  
Name of Property

Phillips County, Arkansas  
County and State

**4. National Park Service Certification**

I hereby certify that this property is:

- entered in the National Register
- determined eligible for the National Register
- determined not eligible for the National Register
- removed from the National Register
- other (explain:)

Signature of the Keeper

Date of Action

**5. Classification**

**Ownership of Property**

(Check as many boxes as apply.)

- Private:
- Public – Local
- Public – State
- Public – Federal

**Category of Property**

(Check only **one** box.)

- Building(s)
- District
- Site
- Structure
- Object

Lee Grocery Store  
Name of Property

Phillips County, Arkansas  
County and State

**Number of Resources within Property**

(Do not include previously listed resources in the count)

Contributing	Noncontributing	
<u>1</u>	_____	buildings
_____	_____	sites
_____	_____	structures
_____	_____	objects
<u>1</u>	_____	Total

Number of contributing resources previously listed in the National Register \_\_\_\_\_

**6. Function or Use**

**Historic Functions**

(Enter categories from instructions.)

COMMERCIAL/TRADE/department store

\_\_\_\_\_  
\_\_\_\_\_  
\_\_\_\_\_  
\_\_\_\_\_  
\_\_\_\_\_

**Current Functions**

(Enter categories from instructions.)

VACANT/NOT IN USE

\_\_\_\_\_  
\_\_\_\_\_  
\_\_\_\_\_  
\_\_\_\_\_

**7. Description**

**Architectural Classification**

(Enter categories from instructions.)

LATE 19<sup>TH</sup> AND EARLY 20<sup>TH</sup> CENTURY AMERICAN MOVEMENTS/Commercial Style

\_\_\_\_\_  
\_\_\_\_\_  
\_\_\_\_\_

Lee Grocery Store  
Name of Property

Phillips County, Arkansas  
County and State

**Materials:** (enter categories from instructions.)

Principal exterior materials of the property:

Foundation: CAST CONCRETE

Walls: BRICK

Roof: OTHER/Tar Built-up

**Narrative Description**

(Describe the historic and current physical appearance and condition of the property. Describe contributing and noncontributing resources if applicable. Begin with a **summary paragraph** that briefly describes the general characteristics of the property, such as its location, type, style, method of construction, setting, size, and significant features. Indicate whether the property has historic integrity.)

**Summary Paragraph**

Located on the corner of Main Street and Quarles Road (Arkansas Highway 44 and 85) in downtown Elaine, Arkansas, the Lee Grocery Store Building was likely constructed circa 1915 as it appears on the 1918 Sanborn map for Elaine as well as in the background of photographs taken during the 1919 race massacre. This standard commercial twentieth-century-style building has a simple one-story plan. The roof is flat, built-up tar. The building is wedge shaped, more narrow in the front and widening towards the back, mirroring the angle of Quarles Road where it intersects Main. The recessed corner entry features a single iron column. The west side of the grocery has no windows as it once abutted a neighboring building that has since been torn down. The east side of the building features a modern town scene mural as well as several "ghost signs." The building stands on a continuous, cast-concrete foundation.

**Narrative Description**

The Lee Grocery Store, located in Elaine, Arkansas, on the corner of Main Street and Quarles Road, was constructed circa 1915, and was owned by Lee family from the 1950s until they sold it c.2014.

This standard commercial twentieth-century-style building has a simple one-story plan. The roof is flat, built-up tar. The building is wedge shaped, more narrow in the front and widening towards the back, mirroring the angle of Quarles Road where it intersects Main. The recessed corner entry features a single iron column. The west side of the grocery has no windows as it once abutted a neighboring building that has since been torn down. The east side of the building features a modern town scene mural as well as several "ghost signs." The building stands on a continuous, cast-concrete foundation.

Lee Grocery Store

Name of Property

Phillips County, Arkansas  
County and State

### **West/Front Elevation**

The store has a recessed corner entry with a single iron column on the southeastern corner. Curved concrete steps lead up to the front entry. The front entry is a double door with one side fixed. A screen door is in front of the main door with remnants of an old Pepsi advertisement attached to the bottom. The entry is flanked on either side by stationary windows covered in metal grating. A window AC unit juts out above the far left side of the building front.

### **East/Side Elevation**

The east side of the Lee Grocery Store Building faces Quarles Road. There is currently a modern mural showing a town scene adhered to the building on this side. Several "ghost signs" are also visible on this side. There are two small windows as well as a side entry door and a larger window towards the back that is now boarded up. The windows and doors all feature double rowlock brick arches. In the vestibule above the side door is another window AC unit. Another, slightly smaller, window AC unit hangs to the right of the side door in what appears to have been another side door that has since been bricked in.

### **North/Rear Elevation**

The rear of the building abuts the building directly behind it.

### **West/Side Elevation**

The west side of the Lee Grocery Store Building has no windows as it once abutted the neighboring building. That building has since been torn down and is now an empty lot being used as a small park/greenspace.

### **Interior**

The interior of the one-story store consists of an open front room. Wooden store shelving and shop counters are still present. The ceiling is wood beadboard and the walls are plaster on brick. The floors are all wooden plank. The floor in the north western corner of the front room has collapsed exposing the crawl space below. In addition to the main store area, there were secondary areas in the back that were inaccessible at the time of the survey.

### **Integrity**

The Lee Grocery Store still has a strong sense of integrity of a neighborhood store which provided goods to residents in the Elaine area. The building retains much of its original fabric from its historic period, and very much reflects its original design. In addition, the setting of the building still reflects the small downtown atmosphere from when it operated as a grocery. As a result, it is easily able to convey its historic significance.

Lee Grocery Store  
Name of Property

Phillips County, Arkansas  
County and State

### 8. Statement of Significance

#### Applicable National Register Criteria

(Mark "x" in one or more boxes for the criteria qualifying the property for National Register listing.)

- A. Property is associated with events that have made a significant contribution to the broad patterns of our history.
- B. Property is associated with the lives of persons significant in our past.
- C. Property embodies the distinctive characteristics of a type, period, or method of construction or represents the work of a master, or possesses high artistic values, or represents a significant and distinguishable entity whose components lack individual distinction.
- D. Property has yielded, or is likely to yield, information important in prehistory or history.

#### Criteria Considerations

(Mark "x" in all the boxes that apply.)

- A. Owned by a religious institution or used for religious purposes
- B. Removed from its original location
- C. A birthplace or grave
- D. A cemetery
- E. A reconstructed building, object, or structure
- F. A commemorative property
- G. Less than 50 years old or achieving significance within the past 50 years

Lee Grocery Store  
Name of Property

Phillips County, Arkansas  
County and State

**Areas of Significance**  
(Enter categories from instructions.)

COMMERCE  
\_\_\_\_\_  
\_\_\_\_\_  
\_\_\_\_\_  
\_\_\_\_\_  
\_\_\_\_\_

**Period of Significance**  
c.1915-1970

\_\_\_\_\_  
\_\_\_\_\_

**Significant Dates**  
c.1915

\_\_\_\_\_  
\_\_\_\_\_

**Significant Person**  
(Complete only if Criterion B is marked above.)

\_\_\_\_\_  
\_\_\_\_\_  
\_\_\_\_\_

**Cultural Affiliation**

\_\_\_\_\_  
\_\_\_\_\_

**Architect/Builder**

\_\_\_\_\_  
\_\_\_\_\_  
\_\_\_\_\_

Lee Grocery Store  
Name of Property

Phillips County, Arkansas  
County and State

**Statement of Significance Summary Paragraph** (Provide a summary paragraph that includes level of significance, applicable criteria, justification for the period of significance, and any applicable criteria considerations.)

### SUMMARY

The Lee Grocery Store Building at 100 Main Street in Elaine, Arkansas, is being nominated for listing in the National Register of Historic Places with **local significance** under **Criterion A** for its association with the commercial development of Elaine. Built c.1915, the Lee Grocery Store is likely one of the first commercial buildings that was built in Elaine, and possibly the oldest surviving commercial building in Elaine today. Operated as a commercial establishment from the time of its construction until 2010, the Lee Grocery Store played a role in Elaine's commercial history for almost a century, likely longer than any other building in the community.

**Narrative Statement of Significance** (Provide at least **one** paragraph for each area of significance.)

### HISTORY OF THE PROPERTY

Phillips County was created by an act of the Arkansas territorial legislature on May 1, 1820, and named after Sylvanus Phillips, a pioneer settler and one of the original owners of the site of Helena. Soon after Phillips County was created, the county seat was established at Helena, which was named after Sylvanus Phillips' daughter, and c.1821 Nicholas Rightor, an early settler and surveyor, laid out the town of Helena on land belonging to Sylvanus Phillips and William Russell.<sup>1</sup>

By 1836, there were several people conducting business at Helena, including John J. Bowie, F. H. Cosset and George W. Fereby, and the town had "about half a dozen business houses...at that time." In addition, William B. R. Hornor, mentioned among the early pioneer settlers, was a lawyer and kept a hotel in Helena at a very early day. B. A. Porter, another of the pioneers, engaged in the lumber business about the year 1836 and erected a saw-mill at Helena."<sup>2</sup>

By 1840, the population of Helena had grown to 250 people, and although the town continued to grow through the 1840s and 1850s, it was at a slow pace. In 1860 the city's population had only grown to 800 people. After the Civil War, Helena's population grew much quicker and by 1880 the city boasted 3,652 residents, and by 1890 the population was estimated to be 5,000 people.<sup>3</sup>

The growth in Helena's population also meant that the city had a lot more commercial establishments than the "half a dozen business houses" that it had in 1836. A description of the city in 1890 showed that:

<sup>1</sup> *Biographical and Historical Memoirs of Eastern Arkansas*. Chicago: The Goodspeed Publishing Co., 1890, p. 739.

<sup>2</sup> *Biographical and Historical Memoirs of Eastern Arkansas*. Chicago: The Goodspeed Publishing Co., 1890, p. 746.

<sup>3</sup> *Biographical and Historical Memoirs of Eastern Arkansas*. Chicago: The Goodspeed Publishing Co., 1890, p. 747.



Lee Grocery Store  
Name of Property

Phillips County, Arkansas  
County and State

[Helena] contains at this writing, Baptist, Catholic, Presbyterian and Methodist churches, four schools, cotton-seed oil mills, lumber mills, cotton gins and compress, planing mills, a foundry and machine shop, an opera house capable of seating 800, three banks, gas-works, two express offices, two railroad depots, ferry-boats for crossing the river, many stores of all kinds, several wholesale houses, four weekly and one daily newspaper, and all the other attributes of a city of its size.<sup>4</sup>

Helena's newspapers included "the *Helena Weekly World*, a nine column folio...established in 1870, ...the *Helena Daily World*, a seven-column folio...established in 1871, ...the *Helena State*...established October 19, 1889...[that] is a seven-column quarto [that] is published every Friday." In addition, two African-American papers were published, which included the "*Southern Review*, an eight-column folio...published by the 'Benevolent Church Aid and Relief Society,'" and the "*People's Friend*, a six-column folio [that] is published weekly..."<sup>5</sup>

By the late nineteenth century, other development in Phillips County seemed to have sprung up along the line of the Arkansas Midland Railroad, which traveled west from Helena. The only other towns mentioned in Goodspeed's history of the area included Poplar Grove (17 miles west of Helena), Marvell (21 miles west of Helena), and Barton (13 miles west of Helena). Only Trenton, "a small village three miles south of Poplar Grove" was not located on the railroad line, and it had "a steam saw and grist mill and cotton gins. ...it also has a hotel, two or three general stores and a population of 150" by 1890.<sup>6</sup>

Settlement in the Elaine area did not occur until the late nineteenth century due to the swampy nature of the land in that part of the county, which was officially designated as swampland by the 1850 Swamp and Overflow Act. However, in 1892, investor Harry Kelley began buying land in the Elaine area based on the prediction of state geologist John Casper Branner. Branner believed that the land in that part of Phillips County would be some of the richest land in the state due to the silt from river flooding that would turn it into fertile farmland. By the time that he was finished, Kelley had amassed an area of approximately 35,000 acres. Kelley granted right-of-way to the St. Louis and Iron Mountain Railroad as long as the railroad established a depot. The depot was originally to be called Kelley, but another station already had that name so it was changed to Elaine. The origin of the name is not known for sure – one possible origin is that it was the name of one of Kelley's daughters. However, one of Kelley's partners later indicated that it was named for a popular actress.<sup>7</sup>

<sup>4</sup> *Biographical and Historical Memoirs of Eastern Arkansas*. Chicago: The Goodspeed Publishing Co., 1890, p. 747.

<sup>5</sup> *Biographical and Historical Memoirs of Eastern Arkansas*. Chicago: The Goodspeed Publishing Co., 1890, p. 747.

<sup>6</sup> *Biographical and Historical Memoirs of Eastern Arkansas*. Chicago: The Goodspeed Publishing Co., 1890, p. 748.

<sup>7</sup> Teske, Steven. "Elaine (Phillips County)." *The Encyclopedia of Arkansas History and Culture*. Found at: <http://www.encyclopediaofarkansas.net/encyclopedia/entry-detail.aspx?search=1&entryID=6112>.

Lee Grocery Store

Name of Property

Phillips County, Arkansas

County and State

During the first decade of the 1900s, the timber that was on the land was sold by Kelley, and in 1911 Kelley and his partners laid out the lots for the new town of Elaine. Once it was laid out, Elaine grew quickly. As noted in *The Encyclopedia of Arkansas History and Culture*:

Within a few years, the growing settlement could boast of paved streets, concrete sidewalks, electric lights, brick store buildings, a brick school house, and a well 1,600 feet deep that provided water to all parts of the city.<sup>8</sup>

Elaine was incorporated in 1919 and the first bank in Elaine was established not long after Elaine's incorporation. Churches for the Baptist and Methodist congregations were also built about the same time.<sup>9</sup> One of the brick store buildings noted in the first years of Elaine's existence was the Lee Grocery.

Following the Civil War many former slaves became tenant farmers and sharecroppers.<sup>10</sup> In 1869 planters from Mississippi, Tennessee, and Arkansas gathered in Memphis to arrange for the importation of Chinese laborers. Planters wanted to bring in immigrant laborers to hurt the socio-political power of the newly freed slaves. Immigrant workers from China were brought in around 1870.<sup>11</sup> These workers signed five-year contracts but most left before their contract was up and none stayed longer than five years.<sup>12</sup> Other Chinese workers migrated to the area from the western United States where they were employed by the railroad.<sup>13</sup> These Chinese immigrants were most often men who left their homeland to work and build wealth in the United States before returning home to their families in China.<sup>14</sup> In 1882, Congress passed the Chinese Exclusion Act thereby prohibiting the immigration of Chinese people to the United States. This resulted in a decline in the number of Chinese both in Arkansas and nationally.<sup>15</sup> By 1890 the US Census recorded only 92 Chinese in Arkansas, which was a decline from the 133 Chinese counted in the 1880 Census. The Chinese that remained in Arkansas turned to running laundries and later grocery stores.<sup>16</sup>

<sup>8</sup> Teske, Steven. "Elaine (Phillips County)." *The Encyclopedia of Arkansas History and Culture*. Found at: <http://www.encyclopediaofarkansas.net/encyclopedia/entry-detail.aspx?search=1&entryID=6112>.

<sup>9</sup> Teske, Steven. "Elaine (Phillips County)." *The Encyclopedia of Arkansas History and Culture*. Found at: <http://www.encyclopediaofarkansas.net/encyclopedia/entry-detail.aspx?search=1&entryID=6112>.

<sup>10</sup> *Ibid.*

<sup>11</sup> Kim, Jung (Kevin). "Chinese." Found at: <http://www.encyclopediaofarkansas.net/encyclopedia/entry-detail.aspx?entryID=5971>.

<sup>12</sup> Teske, Steven. "Elaine (Phillips County)." *The Encyclopedia of Arkansas History and Culture*. Found at: <http://www.encyclopediaofarkansas.net/encyclopedia/entry-detail.aspx?search=1&entryID=6112>.

<sup>13</sup> Baker, William D. *Minority Settlement in the Mississippi River Counties of the Arkansas Delta 1870-1930*. Little Rock: Arkansas Historic Preservation Program, p. 3.

<sup>14</sup> Kim, Jung (Kevin). "Chinese." *The Encyclopedia of Arkansas History and Culture*. Found at: <http://www.encyclopediaofarkansas.net/encyclopedia/entry-detail.aspx?entryID=5971>.

<sup>15</sup> *Ibid.*

<sup>16</sup> Balogh, George W. "Immigration." *The Encyclopedia of Arkansas History and Culture*. Found at: <http://www.encyclopediaofarkansas.net/encyclopedia/entry-detail.aspx?search=1&entryID=5034>.

Lee Grocery Store

Phillips County, Arkansas  
County and State

Name of Property

By the 1920s, almost 75% of the state's Chinese population was living in Phillips, Chicot, Jefferson, and Crittenden counties. The vast majority of the state's Chinese population was working in the grocery store business at the time, and the stores were often located in rural areas of the state where farm workers were living. Due to the fact that most of the Chinese population was living in Phillips, Chicot, Jefferson, and Crittenden counties, it was no surprise that most of the Chinese-run grocery stores were also found in those four counties.<sup>17</sup>

As the Chinese population changed from farm laborers to merchants and grocery store owners, a second wave of Chinese immigrants came to the state. Although some lived here only temporarily, those that stayed often sent for their families to join them. As noted in *The Encyclopedia of Arkansas History and Culture*, "This chain migration allowed for the already small and tight-knit Chinese community to be even more tightly knit, with the population consisting of only a small handful of familial clans. Another noticeable characteristic of the population at the time is the lack of women. According to the 1880 Census, only two Chinese women were in Arkansas. Even as late as 1940, the Chinese population in Arkansas was heavily skewed toward males."<sup>18</sup>

Chinese who owned and operated grocery stores often lived very simple lives, and in the early years they often lived in the same building where they worked using a room in the back as their living quarters while they operated the store in the front of the building. Often, the stores were located in black neighborhoods and catered mainly to African Americans.<sup>19</sup>

Elaine was also influenced by the Chinese population that settled in Phillips County, and it had at least two Chinese grocers during the twentieth century. By 1920, George Lum, a Chinese gentleman who came to the United States in 1892, was living in Elaine and he was listed as a merchant in the 1920 Census. His household also included his wife Leila (Lillie), daughter Katie, sons, Willie and Henry, and nephew Charlie. Lum continued to operate a store up through at least 1940. In the 1930 Census, it was indicated that he sold general merchandise, and in 1940 he operated a retail grocery store. (Interestingly, in 1930, Charlie was listed as his son, and was not listed at all in the 1940 Census.)<sup>20</sup> The Lee Family, who eventually owned and operated the Lee Grocery Store, were also a Chinese Family that had come to Phillips County and settling in Elaine and Oneida.

Although it is not known exactly when the Lee Grocery was built, it is known that the building was built prior to 1919. The building appears on the 1918 Sanborn map for Elaine and photographs of downtown Elaine taken during the period of the Elaine Massacre in 1919 show the building in place. Given the fact that the lots in Elaine were laid out in 1911, it is likely that

<sup>17</sup> Kim, Jung (Kevin). "Chinese." *The Encyclopedia of Arkansas History and Culture*. Found at: <http://www.encyclopediaofarkansas.net/encyclopedia/entry-detail.aspx?entryID=5971>.

<sup>18</sup> Kim, Jung (Kevin). "Chinese." *The Encyclopedia of Arkansas History and Culture*. Found at: <http://www.encyclopediaofarkansas.net/encyclopedia/entry-detail.aspx?entryID=5971>.

<sup>19</sup> Kim, Jung (Kevin). "Chinese." *The Encyclopedia of Arkansas History and Culture*. Found at: <http://www.encyclopediaofarkansas.net/encyclopedia/entry-detail.aspx?entryID=5971>.

<sup>20</sup> Census Data for Elaine, Phillips, County, Arkansas. 1920, 1930, and 1940. In the files of the Arkansas Historic Preservation Program.

Lee Grocery Store

Name of Property

Phillips County, Arkansas

County and State

the building was built shortly after 1911. The building was built on the northwest corner of Main Street and Arkansas Highway 44, a prominent site in downtown Elaine not only for local residents, but also for travelers passing through the community.

Little is known about the Lee Grocery Store's early history. In 1918, the year that the first Sanborn Fire Insurance Map was completed for Elaine, the building was labeled as "Drugs." Downtown Elaine still had many vacant lots at the time, but it wasn't surprising given the fact that the community was less than ten years old in 1918. By 1926, most of the lots in the Lee Grocery Store's block had been built on and the Lee Grocery Store was still labeled as "Drugs." It was one of two drug stores in downtown Elaine at the time. However, by 1950, when the next and last Sanborn map was completed for Elaine, the building was labeled "S," indicating that it was an unspecified kind of store.<sup>21</sup>

Although the early history of the building is not known, it is known that the building was purchased, likely in the early 1950s, by W. J. Lee. Originally from China, Lee immigrated to San Francisco where he worked as a hotel manager. However, after he had met a gentleman who talked about economic opportunities in the South, he moved to Arkansas and entered the grocery business, operating the store in Elaine. (Other members of the Lee family also operated a store in Oneida, approximately 13 miles northeast of Elaine.) Lee also purchased some land near Oneida and engaged in farming as well. Eventually, the store passed to two of W. J. Lee's sons, Seat N. Lee and Kam S. Lee, who continued to operate the grocery store until 2010. Although the store closed in 2010, the family continued to own the building until c.2014.<sup>22</sup>

The current owner, Waves of Prayer, purchased the building in 2017, and hopes to restore the building and turn it into a visitor's center for the Elaine area. Today, the Lee Grocery Store is an important remnant of the early commercial history of Elaine, and the influence of the Chinese population on the area's commercial and ethnic history.

### **SIGNIFICANCE OF THE PROPERTY**

During much of the twentieth century, in small towns across Arkansas, small stores such as the Lee Grocery Store were essential to the residents of the town and the surrounding countryside. In order to avoid longer trips to larger cities, such as Helena in the case of Elaine, having a small grocery store in the local community was an important part of life and the commercial livelihood of a community.

The location of the Lee Grocery Store at the town's main intersection, as well as the fact that the building was brick rather than frame, meant that it was a prominent building in Elaine's commercial core. Its location on the state highway meant that not only did it serve the residents of Elaine, but was likely a business that catered to travelers passing through town. In addition, Elaine's railroad depot used to stand on the southeast corner of the intersection, so it is possible that the commercial establishments in the building also catered to travelers on the railroad as

<sup>21</sup> Sanborn Fire Insurance Maps for Elaine, Phillips County, Arkansas (Grouped with Helena, Arkansas). 1918, 1926, and 1950.

<sup>22</sup> Lee, Tim (grandson of W.J. Lee and son of Seat N. Lee). Telephone Conversation with the author. 10 September 2019.

Lee Grocery Store

Name of Property

Phillips County, Arkansas  
County and State

well. The building's importance in the commercial history of Elaine is also illustrated in the fact that the building remained a viable commercial business from the time of its construction c.1915 until it closed in 2010. Due to its significance in the commercial history of Elaine, the Lee Grocery Store Building at 100 Main Street in Elaine, Arkansas, is being nominated for listing in the National Register of Historic Places with **local significance** under **Criterion A**.

Lee Grocery Store  
Name of Property

Phillips County, Arkansas  
County and State

---

## 9. Major Bibliographical References

**Bibliography** (Cite the books, articles, and other sources used in preparing this form.)

Baker, William D. *Minority Settlement in the Mississippi River Counties of the Arkansas Delta 1870-1930*. Little Rock: Arkansas Historic Preservation Program.

Balogh, George W. "Immigration." *The Encyclopedia of Arkansas History and Culture*. Found at: <https://encyclopediaofarkansas.net/entries/immigration-5034/>.

*Biographical and Historical Memoirs of Eastern Arkansas*. Chicago: The Goodspeed Publishing Co., 1890.

Census Data for Elaine, Phillips, County, Arkansas. 1920, 1930, and 1940. In the files of the Arkansas Historic Preservation Program.

Kim, Jung (Kevin). "Chinese." *The Encyclopedia of Arkansas History and Culture*. Found at: <http://www.encyclopediaofarkansas.net/encyclopedia/entry-detail.aspx?entryID=5971>.

Lee, Tim (grandson of W.J. Lee and son of Seat N. Lee). Telephone Conversation with the author. 10 September 2019.

Sanborn Fire Insurance Maps for Elaine, Phillips County, Arkansas (Grouped with Helena, Arkansas). 1918, 1926, and 1950.

Teske, Steven. "Elaine (Phillips County)." *The Encyclopedia of Arkansas History and Culture*. Found at: <http://www.encyclopediaofarkansas.net/encyclopedia/entry-detail.aspx?search=1&entryID=6112>.

---

### Previous documentation on file (NPS):

- preliminary determination of individual listing (36 CFR 67) has been requested
- previously listed in the National Register
- previously determined eligible by the National Register
- designated a National Historic Landmark
- recorded by Historic American Buildings Survey # \_\_\_\_\_
- recorded by Historic American Engineering Record # \_\_\_\_\_
- recorded by Historic American Landscape Survey # \_\_\_\_\_

### Primary location of additional data:

State Historic Preservation Office

Lee Grocery Store  
Name of Property

Phillips County, Arkansas  
County and State

- Other State agency
  - Federal agency
  - Local government
  - University
  - Other
- Name of repository: \_\_\_\_\_

Historic Resources Survey Number (if assigned): PH0571

---

### 10. Geographical Data

Acreage of Property Less than one acre.

Use either the UTM system or latitude/longitude coordinates

#### Latitude/Longitude Coordinates

Datum if other than WGS84: \_\_\_\_\_

(enter coordinates to 6 decimal places)

- |              |            |
|--------------|------------|
| 1. Latitude: | Longitude: |
| 2. Latitude: | Longitude: |
| 3. Latitude: | Longitude: |
| 4. Latitude: | Longitude: |

Or

#### UTM References

Datum (indicated on USGS map):

NAD 1927 or  NAD 1983

- |             |                 |                   |
|-------------|-----------------|-------------------|
| 1. Zone: 15 | Easting: 697685 | Northing: 3798427 |
| 2. Zone:    | Easting:        | Northing:         |
| 3. Zone:    | Easting:        | Northing:         |
| 4. Zone:    | Easting :       | Northing:         |

Lee Grocery Store  
Name of Property

Phillips County, Arkansas  
County and State

**Verbal Boundary Description** (Describe the boundaries of the property.)

Part of Lot 1 of Block 4 of the Town of Elaine. Parcel #701-00042-000.

**Boundary Justification** (Explain why the boundaries were selected.)

The boundary contains all of the land historically associated with the property.

---

**11. Form Prepared By**

name/title: Leslie Martin, Intern, & Ralph S. Wilcox, National Register & Survey Coordinator

organization: Arkansas Historic Preservation Program

street & number: 1100 North Street

city or town: Little Rock state: AR zip code: 72201

e-mail: ralph.wilcox@arkansas.gov

telephone: (501) 324-9787

date: September 11, 2019

---

**Additional Documentation**

Submit the following items with the completed form:

- **Maps:** A **USGS map** or equivalent (7.5 or 15 minute series) indicating the property's location.
- **Sketch map** for historic districts and properties having large acreage or numerous resources. Key all photographs to this map.
- **Additional items:** (Check with the SHPO, TPO, or FPO for any additional items.)



Lee Grocery Store  
Name of Property

Phillips County, Arkansas  
County and State

### Photographs

Submit clear and descriptive photographs. The size of each image must be 1600x1200 pixels (minimum), 3000x2000 preferred, at 300 ppi (pixels per inch) or larger. Key all photographs to the sketch map. Each photograph must be numbered and that number must correspond to the photograph number on the photo log. For simplicity, the name of the photographer, photo date, etc. may be listed once on the photograph log and doesn't need to be labeled on every photograph.

### Photo Log

Name of Property: Lee Grocery

City or Vicinity: Elaine

County: Phillips County

State: Arkansas

Photographer: Mason Toms

Date Photographed: March 13, 2019

Description of Photograph(s) and number, include description of view indicating direction of camera:

- 1 of 10 . East façade of the building, looking west.
- 2 of 10 . South and east façades of the building, looking northwest.
- 3 of 10 . South façade of the building, looking north.
- 4 of 10 . South and west façades of the building, looking northeast.
- 5 of 10 . West façade of the building, looking southeast.
- 6 of 10 . South and east façades of the building, looking northwest.
- 7 of 10 . Detail of the building's corner entrance, looking northwest.
- 8 of 10 . Interior of the building, looking north.
- 9 of 10 . Interior of the building, looking southwest.
- 10 of 10 . Detail of the transom windows, looking southeast.

Lee Grocery Store  
Name of Property

Phillips County, Arkansas  
County and State



**Figure 1:** View of Downtown Elaine on October 2, 1919, with the Lee Grocery Store on the right. (From *The Encyclopedia of Arkansas History and Culture*.)

Lee Grocery Store  
Name of Property

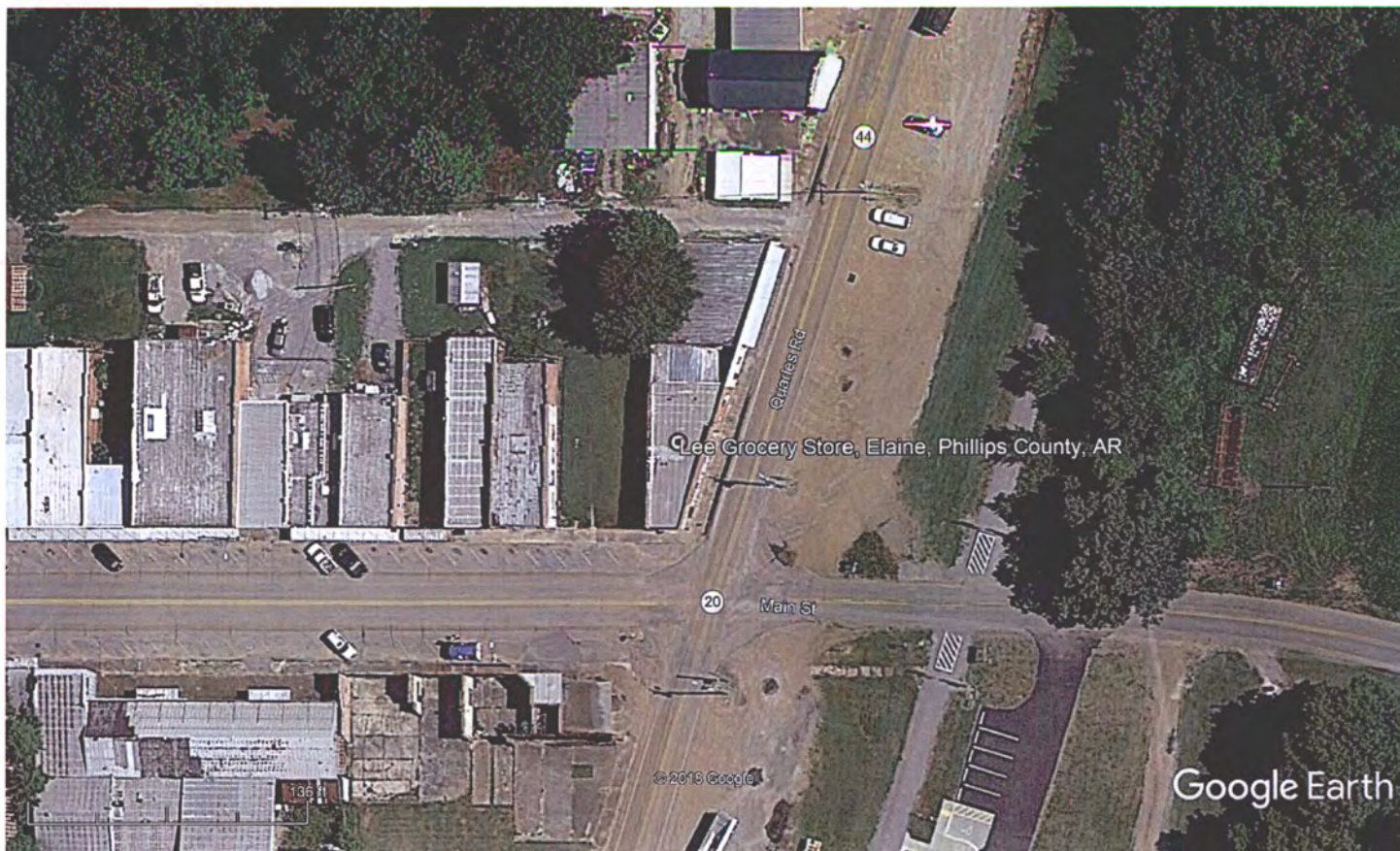
Phillips County, Arkansas  
County and State



**Figure 2:** View of Downtown Elaine in October 1919 with the Lee Grocery Store on the left.  
(From the wayside exhibit in downtown Elaine.)

**Paperwork Reduction Act Statement:** This information is being collected for applications to the National Register of Historic Places to nominate properties for listing or determine eligibility for listing, to list properties, and to amend existing listings. Response to this request is required to obtain a benefit in accordance with the National Historic Preservation Act, as amended (16 U.S.C.460 et seq.).

**Estimated Burden Statement:** Public reporting burden for this form is estimated to average 100 hours per response including time for reviewing instructions, gathering and maintaining data, and completing and reviewing the form. Direct comments regarding this burden estimate or any aspect of this form to the Office of Planning and Performance Management, U.S. Dept. of the Interior, 1849 C. Street, NW, Washington, DC.



|-----136 feet-----|

Lee Grocery Store  
Elaine, Phillips County, Arkansas

UTM: 15 697685E 3798427N

↑  
North



|-----771 feet-----|

Lee Grocery Store  
Elaine, Phillips County, Arkansas

UTM: 15 697685E 3798427N

↑  
North





PLEASE LEAVE  
MUSEUM CENTER

PLEASE  
DO NOT  
ENTER



  
The Elaine Legacy Center  
A Project of the  
City of Elaine, Arkansas  
1000 North Main Street  
Elaine, Arkansas 72034

FUTURE SITE OF  
**ELAINE  
WELCOME  
CENTER**

and  
**Gateway  
To The Elaine  
Museum**

[Blank white sign]





The Elaine Legacy Center  
A Division of  
Arkansas Heritage

FUTURE SITE OF  
ELAINE  
WELCOME  
CENTER

and  
Gateway  
To The Elaine  
Museum





THE CITY OF  
ELAND  
Gateway  
to the Game  
Museum



DEBSON'S  
FISH MARKET



d  
Way  
Elaine  
um.

PEPSI  
Pepsi  
blea



