

NR Listed 11-01-00

"Strengthen the Arm of Liberty" Monument
Name of Property

Jefferson County, Arkansas
County and State

NPS Form 10-900
(Rev. 8-86)

OMB No. 1024-0018

United States Department of the Interior
National Park Service

**NATIONAL REGISTER OF HISTORIC PLACES
REGISTRATION FORM**

1. Name of Property

Historic Name: "Strengthen the Arm of Liberty" Monument

Other Name/Site Number: JE0544S

2. Location

Street & Number: 10th Ave. between Georgia and State Streets

Not for Publication: NA

City/Town: Pine Bluff

Vicinity: NA

State: AR County: Jefferson Code: AR069 Zip Code: 71601

3. Classification

Ownership of Property: Public - local

Category of Property: Object

Number of Resources within Property:

Contributing Noncontributing

___	___	buildings
___	___	sites
___	___	structures
<u> 1 </u>	<u> 0 </u>	objects
<u> 1 </u>	<u> 0 </u>	Total

Number of contributing resources previously listed in the National Register: NA

Name of related multiple property listing: NA

4. State/Federal Agency Certification

As the designated authority under the National Historic Preservation Act of 1986, as amended, I hereby certify that this X nomination ___ request for determination of eligibility meets the documentation standards for registering properties in the National Register of Historic Places and meets the procedural and professional requirements set forth in 36 CFR Part 60. In my opinion, the property X meets ___ does not meet the National Register Criteria. ___ See continuation sheet.

Casimir Matheus 9/8/00
 Signature of certifying official Date

Arkansas Historic Preservation Program
 State or Federal agency and bureau

"Strengthen the Arm of Liberty" Monument
Name of Property

Jefferson County, Arkansas
County and State

In my opinion, the property meets does not meet the National Register criteria. See continuation sheet.

Signature of commenting or other official Date

State or Federal agency and bureau

5. National Park Service Certification

I, hereby certify that this property is:

- entered in the National Register _____
 See continuation sheet.
- determined eligible for the _____
National Register
 See continuation sheet.
- determined not eligible for the _____
National Register
- removed from the National Register _____
- other (explain): _____

Signature of Keeper Date
 of Action

"Strengthen the Arm of Liberty" Monument
Name of Property

Jefferson County, Arkansas
County and State

6. Function or Use

Historic: RECREATION AND CULTURE Sub: Monument/Marker

Current: RECREATION AND CULTURE Sub: Monument/Marker

7. Description

Architectural Classification:

Neoclassical

Materials: foundation CAST CONCRETE roof NA
walls METAL/copper other _____

Describe present and historic physical appearance:

SUMMARY

The "Strengthen the Arm of Liberty" Monument is an eight-foot tall copper replica of Frederick Auguste Bartholdi's "Liberty Enlightening the World," a sculpture better known as "The Statue of Liberty." It stands atop a three-and-one-half foot tall cast concrete base on a grassy median strip on 10th Avenue adjacent to the Pine Bluff Civic Center.

ELABORATION

The "Strengthen the Arm of Liberty" Monument is an eight-foot tall copper replica of Frederick Auguste Bartholdi's "Liberty Enlightening the World," a sculpture better known as "The Statue of Liberty." It stands atop a three-and-one-half foot tall cast concrete base on a grassy median strip on 10th Avenue adjacent to the Pine Bluff Civic Center.

The statue depicts a standing female figure holding a lighted torch aloft in her proper right arm and a tablet cradled in her proper left arm. She is dressed in flowing, classical robes and adorned with a radiant crown. The statue shows signs of oxidation and is spotted with bird guano; it would benefit from conservation treatment. The statue stands

Name of Property

eight feet tall, two feet wide and two feet deep. The statue faces north.

It stands atop a tapering cast concrete base that is three and one-half feet tall and two and one-half feet wide and deep. The north side of the base features a bronze plaque that reads as follows: DEDICATED/TO BOY SCOUTS/WITH FAITH AND COURAGE OF/THEIR FOREFATHERS WHO MADE/POSSIBLE THE FREEDOM OF THESE/UNITED STATES./THE BOY SCOUTS OF AMERICA/DEDICATE THIS COPY OF THE/STATUE OF LIBERTY AS A PLEDGE/OF EVERLASTING FIDELITY AND/LOYALTY./40TH ANNIVERSARY CRUSADE TO/STRENGTHEN THE ARM OF LIBERTY/1950/BY/PINE BLUFF/KIWANIS AND LIONS/CLUBS.

The bronze has stained the base in places, and the base shows some signs of cracking. Though it would benefit from conservation treatment, the overall piece is in relatively good condition.

8. Statement of Significance

Certifying official has considered the significance of this property in relation to other properties: Statewide.

Applicable National Register Criteria: A

Criteria Considerations (Exceptions): F, B

Areas of Significance: SOCIAL HISTORY

Period(s) of Significance: 1950

Significant Dates: Oct. 7, 1950

Significant Person(s): NA

Cultural Affiliation: NA

"Strengthen the Arm of Liberty" Monument

Jefferson County, Arkansas

Name of Property

County and State

Architect/Builder: Friedley Voshardt Co., Chicago

State significance of property, and justify criteria, criteria considerations, and areas and periods of significance noted above:

SUMMARY

The "Strengthen the Arm of Liberty" Monument at Pine Bluff is eligible for listing on the National Register of Historic Places under Criterion A with statewide significance as one of only two Statue of Liberty replicas erected in Arkansas as part of a national campaign by the Boy Scouts of America between 1949 and 1951. It was moved to its present location from its original location in front of the Pine Bluff library on Fifth Avenue in the mid-1960s when the library's holdings and activities were moved to the newly opened Pine Bluff Civic Center. It still stands in a public space, however, and thus retains its integrity of setting, feeling and association, meeting the requirements of Criteria Consideration B. Since the monument was erected as a direct result of the national Boy Scout "Crusade to Strengthen the Arm of Liberty," the monument is directly associated with that event and is not commemorative in nature; thus, Criteria Consideration F is not relevant in relation to this object.

ELABORATION

The Boy Scouts of America were incorporated on Feb. 8, 1910, bringing to America a program begun in Great Britain by Robert S.S. Baden-Powell. By 1912, Scouts were enrolled in every state in the Union. The Boy Scouts, with their famous motto "Be Prepared," participated in local and national efforts to offer assistance in patriotic campaigns. In 1917, "Scouting's full resources were placed at the service of the government, under the slogan 'Help Win the War,' and, within 24 hours, Scouts throughout the United States were so advised," according to the Boy Scouts of America web page. By 1919, the Scouts had developed a systematic method of developing cooperation with churches of all faiths, promoting an inclusive, egalitarian ethic that has remained a central tenet of Scouting.

The Cub Scouts, enrolling younger boys, were established in 1930 and by 1935, when the Scouts celebrated their Silver Jubilee, there were 1,027,833 active Boy Scouts in the U.S. In 1938, the Scouts' national program emphasized Americanism and a rededication to the U.S. Constitution and the Declaration of Independence. During World War II, the Scouts were again called to national service, participating in salvage drives, aiding in distribution of government pamphlets, and assisting in production and conservation projects. In one two-week drive, Scouts were credited with collecting 30 million pounds of rubber.

As the 40th anniversary of the Boy Scouts of America approached, Jack P. Whitaker, Scout commissioner of the Kansas City Area Council, conceived of a program to "impress upon the general public the citizenship training values of the Boy Scouts and to reawaken Americans to their heritage of freedom." The mechanism for this program was placement of small-scale replicas of Frederic Auguste Bartholdi's "Liberty Enlightening the World," better known as "The Statue of Liberty," across the country. Whitaker's crusade to "Strengthen the Arm of Liberty" kicked off in February 1949 with a dramatic ceremony at the base of the Statue of Liberty in New York Harbor. The first of some 200 of the small-scale, copper replicas through the program occurred on November 20, 1949, in Kansas

City, Missouri.

The statues were produced by the Friedley Voshardt Company of Chicago, a firm that specialized in metal ceiling manufacturing but devised a method of assembling 42 sheets of stamped copper around interior braces to create replica's of Bartholdi's famous work. They were sold for \$300 to \$350 each, and fund drives often combined both Scout troops and adult service organizations. Ultimately, around 200 of the statues were raised, the vast majority in the Midwest. Though a few were erected later, most were in place by the end of 1951. The 1990s Save Outdoor Sculpture! program identified about 100 surviving statues, about half of which are in serious need of repair.

The first statue erected in the south as part of the "Strengthen the Arm of Liberty" movement was placed in Pine Bluff, Arkansas, as the result of a joint effort of local Boy Scouts and the Pine Bluff Kiwanis and Lions Clubs. In announcing the upcoming ceremony to dedicate the statue, the *Pine Bluff Commercial* said the dedication "is the climax to a year of intensive scouting activity in the Tri-County District (Jefferson, Lincoln and Grant Counties)."

On Oct. 6, 1950, the *Commercial* announced that the Pine Bluff statue dedication "is the first such presentation in Boy Scout Region 5," which includes Arkansas, Texas, Louisiana, Tennessee, Alabama, Georgia, Florida, Mississippi and Kentucky.

The main speaker at the Oct. 7, 1950, dedication was Sen. John McClellan, who waxed purple at the ceremony, declaring that "All true Americans cherish and revere our heritage of liberty. Millions of our youths have so appraised and loved it that they have fought and died on land, on the sea, and in the air, on foreign battlefields in two World Wars, and are now fighting in Korea, that freedom might not perish from the earth. Only by vigilance and by emulating the Boy Scout's motto, 'Be Prepared,' can we hope to prevent another world catastrophe" The Kiwanis and Lions presented the statue to the Boy Scouts, who in turn donated it to the City of Pine Bluff. An estimated 1,000 people attended the dedication and watched a parade of 200 Boy Scouts and four marching bands.

The "Strengthen the Arm of Liberty" crusade ended in 1951, with the Boy Scouts of America reporting a 33 percent increase in membership, a total of 2,942,779 active Scouts.

The "Strengthen the Arm of Liberty Monument" stood in front of the Pine Bluff Library on Fifth Avenue from 1950 to the mid-1960s, when the library and Pine Bluff city offices moved to the new, Edward Durrell Stone-designed Pine Bluff Civic Center. Since that date, it has stood at the center of a grassy median adjacent to the Civic Center, still standing tall as a symbol of liberty and a reminder of the national Boy Scout campaign that resulted in its placement in Pine Bluff.

The "Strengthen the Arm of Liberty" Monument at Pine Bluff is eligible for listing on the National Register of Historic Places under Criterion A with statewide significance as one of only two Statue of Liberty replicas erected in Arkansas as part of a national campaign by the Boy Scouts of America between 1949 and 1951. It was moved to its present location from its original location in front of the Pine Bluff library on Fifth Avenue in the mid-1960s when the library's holdings and activities were moved to the newly opened Pine Bluff Civic Center. It still stands in a public space, however, and thus retains its integrity of setting, feeling and association, meeting the requirements of Criteria Consideration B. Since the monument was erected as a direct result of the national Boy Scout "Crusade

to Strengthen the Arm of Liberty," the monument is directly associated with that event and is not commemorative in nature; thus, Criteria Consideration F is not relevant in relation to this object.

9. Major Bibliographical References

Boy Scouts of America web page, <http://www.scouting.org/>

Pine Bluff Commercial. "A 'Miss Liberty' for Pine Bluff, Sept. 17, 1950, p. 1; "Liberty Statue Dedication Set for Tomorrow," Oct. 6, 1950; "McClellan Speaks at Unveiling of Statue," Oct. 8, 1950.

Rhodes, Carlton "Sonny," interview, June 15, 2000.

Sherwood, Susan. "Searching for Lost Ladies of Liberty," *Save Outdoor Sculpture! Update*, Vol. 10, No. 1, Spring 1999, p. 3.

Smithsonian Institution National Museum of American Art, fact sheets on "Strengthening the Arm of Liberty" program.

Previous documentation on file (NPS):

- preliminary determination of individual listing (36 CFR 67) has been requested.
- previously listed in the National Register
- previously determined eligible by the National Register
- designated a National Historic Landmark
- recorded by Historic American Buildings Survey # _____
- recorded by Historic American Engineering Record # _____

Primary Location of Additional Data:

- State historic preservation office
- Other state agency
- Federal agency
- Local government
- University
- Other -- Specify Repository: _____

"Strengthen the Arm of Liberty" Monument

Name of Property

Jefferson County, Arkansas

County and State

10. Geographical Data

Acreage of Property: Less than one

UTM References: Zone Easting Northing Zone Easting Northing

A 15 592040 3786760 B

C D

Verbal Boundary Description:

An area around the monument defined by a 25-foot radius centered on the monument itself.

Boundary Justification:

This boundary includes all the property historically associated with this resource.

11. Form Prepared By

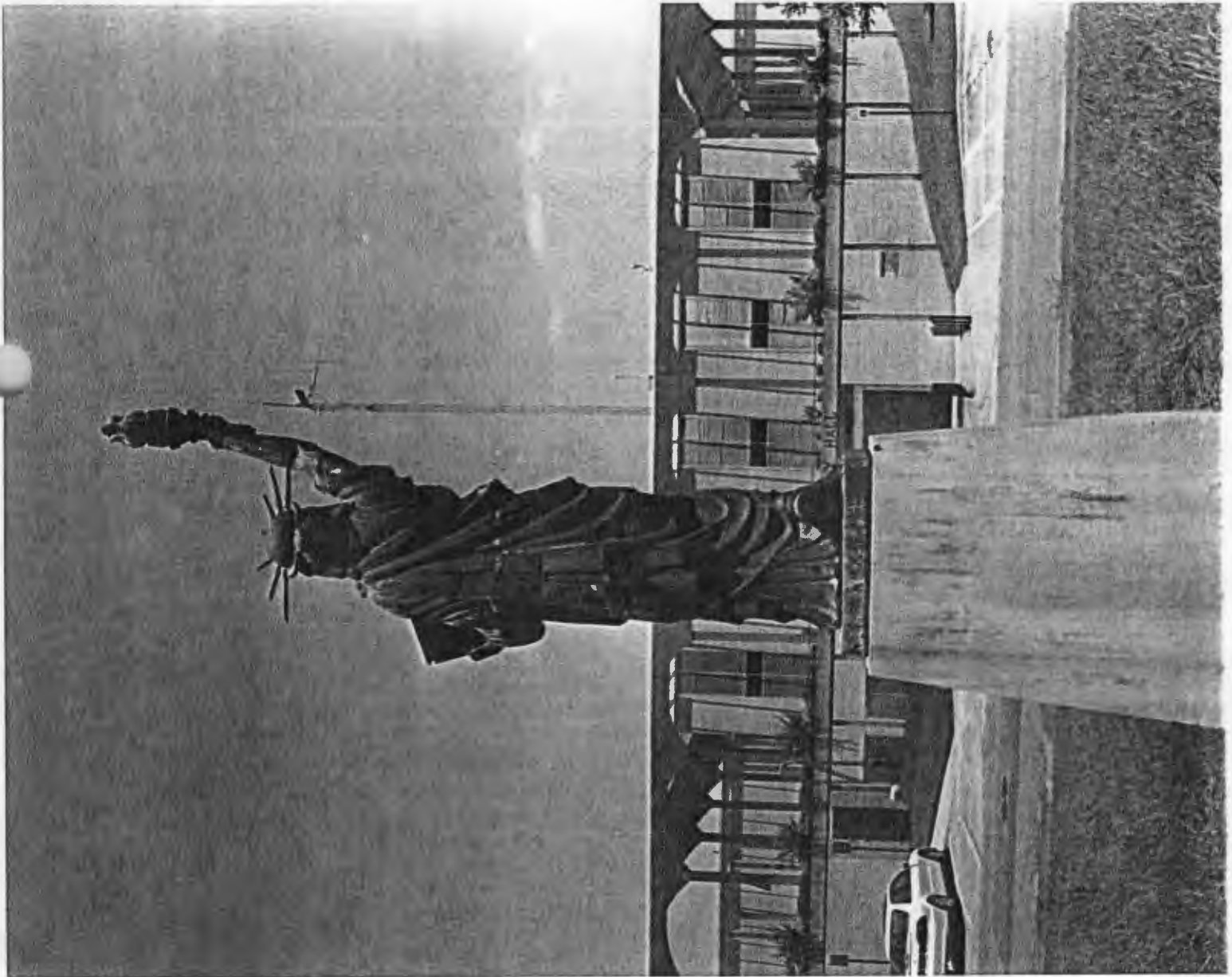
Name/Title: Mark Christ/Community Outreach Director


Organization: Arkansas Historic Preservation Program Date: September 7, 2000

Street & Number: 1500 Tower Bldg., 323 Center St. Telephone: (501) 324-9880

City or Town: Little Rock State: AR ZIP: 72201







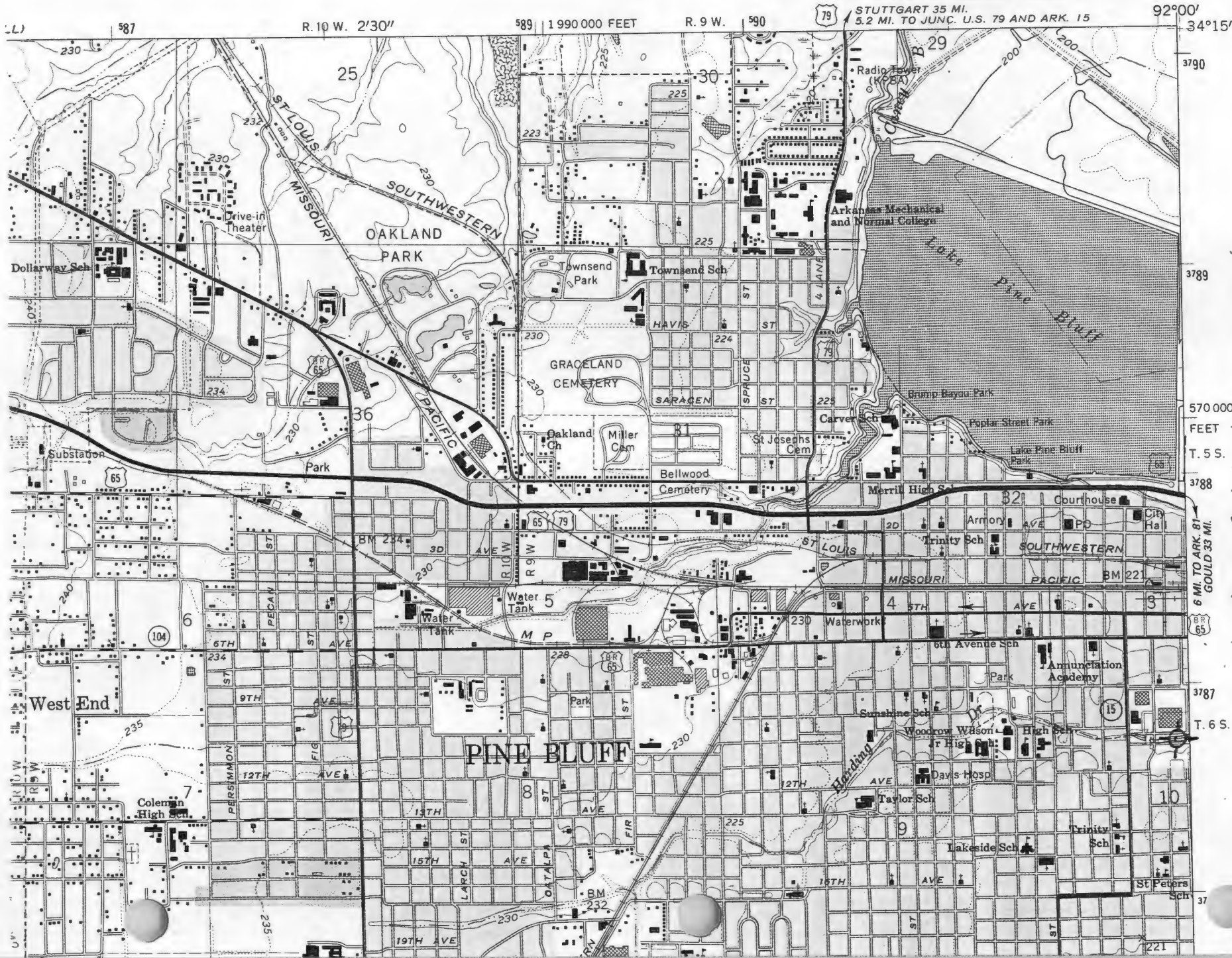
DEDICATED TO
BOY SCOUTS OF AMERICA



BY
PINE BLUFF
KIWANIS AND LIONS
CLUBS

PINE BLUFF QUADRANGLE
 ARKANSAS—JEFFERSON CO.
 7.5 MINUTE SERIES (TOPOGRAPHIC)

7652 IV SW
 (ROB ROY)



STUTTGART 35 MI.
 5.2 MI. TO JUNC. U.S. 79 AND ARK. 15

92°00'

3790

3789

570 000
 FEET

T. 5 S.

3788

6 MI. TO ARK. 81
 GOULD 33 MI.

3787

T. 6 S.

37

*'Strengthen the Arm of Liberty' Monument
 Pine Bluff, Jefferson County, AR*

15/592 049/3756760