

United States Department of the Interior
National Park Service

NATIONAL REGISTER OF HISTORIC PLACES
REGISTRATION FORM

=====

1. Name of Property

=====

historic name: Cedar Creek Bridge

other name/site number: IN0237

=====

2. Location

=====

street & number: County Road 235 at its crossing of Cedar Creek (located approximately 1.5 miles south of its junction with State Highway 14)

not for publication: N/A

city/town: Rosie

vicinity: X

state: AR county: Independence code: AR 063 zip code: 72571

=====

3. Classification

=====

Ownership of Property: Public-local

Category of Property: Structure

Number of Resources within Property:

Contributing	Noncontributing	
_____	_____	buildings
_____	_____	sites
<u>1</u>	_____	structures
_____	_____	objects
<u>1</u>	<u>0</u>	Total

Number of contributing resources previously listed in the National Register: N/A

Name of related multiple property listing: Historic Bridges of Arkansas

=====
4. State/Federal Agency Certification
=====

As the designated authority under the National Historic Preservation Act of 1986, as amended, I hereby certify that this X nomination _____ request for determination of eligibility meets the documentation standards for registering properties in the National Register of Historic Places and meets the procedural and professional requirements set forth in 36 CFR Part 60. In my opinion, the property X meets _____ does not meet the National Register Criteria. _____ See continuation sheet

Cathryn A. Slatu _____ 4-5-95
Signature of certifying official Date

Arkansas Historic Preservation Program
State or Federal agency and bureau

In my opinion, the property _____ meets _____ does not meet the National Register criteria. _____ See continuation sheet.

Signature of commenting or other official Date

State or Federal agency and bureau

=====
5. National Park Service Certification
=====

I, hereby certify that this property is:

- _____ entered in the National Register _____
_____ See continuation sheet.
- _____ determined eligible for the _____
National Register _____
- _____ See continuation sheet.
- _____ determined not eligible for the _____
National Register _____
- _____ removed from the National Register _____
- _____ other (explain): _____

Signature of Keeper Date
of Action

=====
6. Function or Use
=====

Historic: TRANSPORTATION Sub: Road-related

Current: TRANSPORTATION Sub: Road-related

=====

9. Major Bibliographical References

=====

See "Historic Bridges of Arkansas" MPS Nomination, Section H.

___ See continuation sheet.

Previous documentation on file (NPS):

- ___ preliminary determination of individual listing (36 CFR 67) has been requested.
- ___ previously listed in the National Register
- ___ previously determined eligible by the National Register
- ___ designated a National Historic Landmark
- ___ recorded by Historic American Buildings Survey # _____
- ___ recorded by Historic American Engineering Record # _____

Primary Location of Additional Data:

- X State historic preservation office
- ___ Other state agency
- ___ Federal agency
- ___ Local government
- ___ University
- ___ Other -- Specify Repository: _____

=====

10. Geographical Data

=====

Acreeage of Property: Less than one

UTM References:	Zone	Easting	Northing	Zone	Easting	Northing
A	<u>15</u>	<u>632125</u>	<u>3945125</u>	B	<u>15</u>	_____
C	<u>15</u>	_____	_____	D	<u>15</u>	_____

___ See continuation sheet.

Verbal Boundary Description: ___ See continuation sheet.

Beginning at a point formed by the intersection of the western edge of County Road 235 with a perpendicular line running parallel with the northern end of the bridge and located approximately 25 feet to the north thereof, proceed westerly for a distance of approximately 25 feet to its intersection with a perpendicular line running parallel with the bridge's western side; thence proceed southerly along said line for a distance of approximately 80 feet to its intersection with a perpendicular line; thence proceed easterly along said line for a distance of approximately 76.1 feet to its intersection with a perpendicular line; thence proceed northerly along said line for a distance of approximately 80 feet to its intersection with a perpendicular line; thence proceed westerly to the point of beginning.

Boundary Justification: ___ See continuation sheet.

This boundary includes all the property historically associated with this resource.

=====

11. Form Prepared By

=====

Name/Title: Ken Story, National Register/Survey Coordinator

Organization: Arkansas Historic Preservation Program Date: 04/04/95

Street & Number: 323 Center Street, Suite 1500 Telephone: (501) 324-9880

City or Town: Little Rock State: AR Zip: 72201

**United States Department of the Interior
National Park Service**

**National Register of Historic Places
Continuation Sheet**

Section number 7 Page 1

Description

Located on County Road 235 at the point where it crosses Cedar Creek (approximately 1.5 miles south of Highway 14), the Cedar Creek Bridge is of stone masonry, closed spandrel deck arch construction. It consists of two spans, the longest of which measures 15 feet. Its total length is 30 feet, its deck width is 24.1 feet, and its overall width is 26.1 feet. Its abutment and pier material is concrete and stone, and its deck material is tar/gravel mix over concrete. A solid concrete barrier (probably later) has been placed atop the parapets.

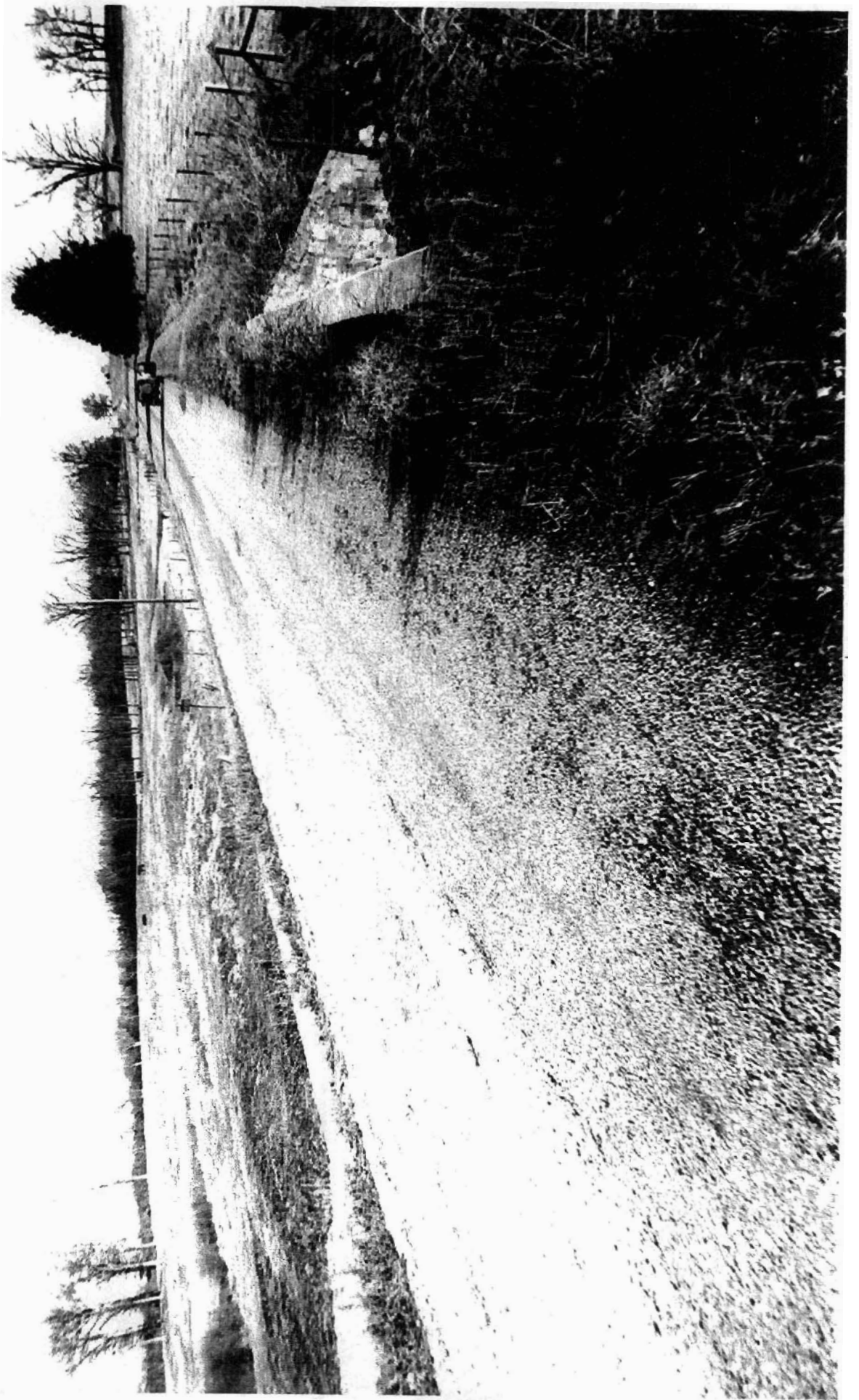
United States Department of the Interior
National Park Service

National Register of Historic Places Continuation Sheet

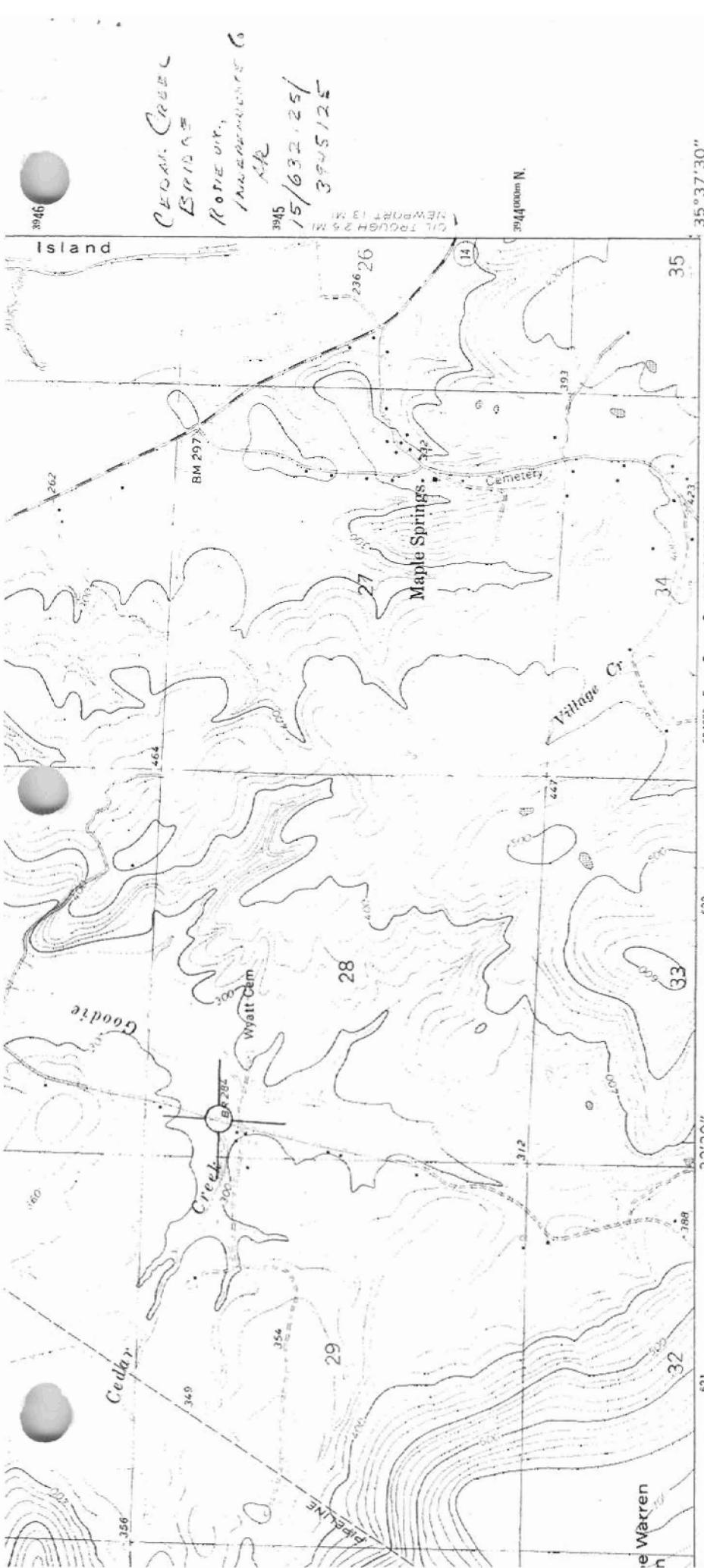
Section number 8 Page 1

Significance

Constructed in 1941, the Cedar Creek Bridge is associated with the *World War II Era* historic context and is of the stone masonry, closed spandrel arch type. Though the identity of its original designer does not survive, it was constructed in conjunction with the Arkansas State Highway Commission and thus may well have been designed by one of that state agency's engineers. Given its relatively intact condition it retains sufficient integrity to remain associated with its historic period; it is thus locally eligible under Criterion C.



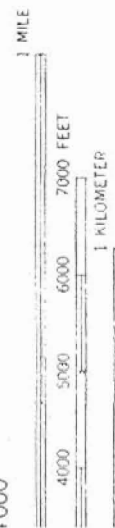
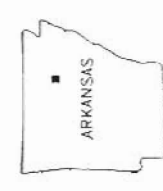




OLYPHANT
 7755 III SW

ROAD CLASSIFICATION

- Heavy-duty
- Medium-duty
- Light duty
- Unimproved dirt
- U. S. Route
- State Route



1:20,000
 10-FOOT CONTOURS
 1929 DATUM

MAP ACCURACY STANDARDS
 FLORADO 80225, OR RESTON, VIRGINIA 22092
 N. LITTLE ROCK, ARKANSAS 72204
 D SYMBOLS IS AVAILABLE ON REQUEST

SALADO, ARK.
 N3537.5—W9130/7.5

1965
 PHOTO REVISSED 1981
 DMA 7655 II NE—SERIES V884

117E