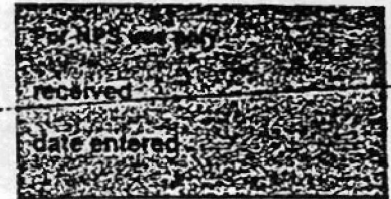


United States Department of the Interior  
National Park Service

EXP. 12/31/84

National Register of Historic Places  
Inventory—Nomination Form



Continuation sheet 49

Item number 1, 2, 4, 6, & 10 Page 1

INDIVIDUAL DATA SHEET

General Description

Code: GA-025

Congressional District: Third

Name: Park Hotel

Current Owner: Keith J. Osborne and  
Kanaiyalal Hathi

Address: 210 Fountain  
Hot Springs, Arkansas

Address: Park Hotel Venture  
210 Fountain

County: Garland

Hot Springs, Arkansas 71901

Architectural Information

Architectural Firm: Thompson, Sanders, and Ginocchio

Date of Construction: 1930

Stylistic Influence: Spanish Colonial  
Revival

Original Use: Hotel

Present Use: Hotel

Geographical Information

UTM Reference: 15 495290/3819360

Acreage: Less than one

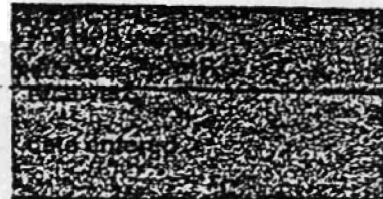
Verbal Boundary Description: Hot Springs Reservation  
Block 125, Lot 10

Condition

☐ Excellent  
☒ Good  
☐ Fair

☐ Deteriorated  
☐ Ruins  
☐ Unexposed

☒ Unaltered  
☐ Altered

**United States Department of the Interior  
National Park Service****National Register of Historic Places  
Inventory—Nomination Form**

Continuation sheet 50

Item number 7 &amp; 8

Page 2

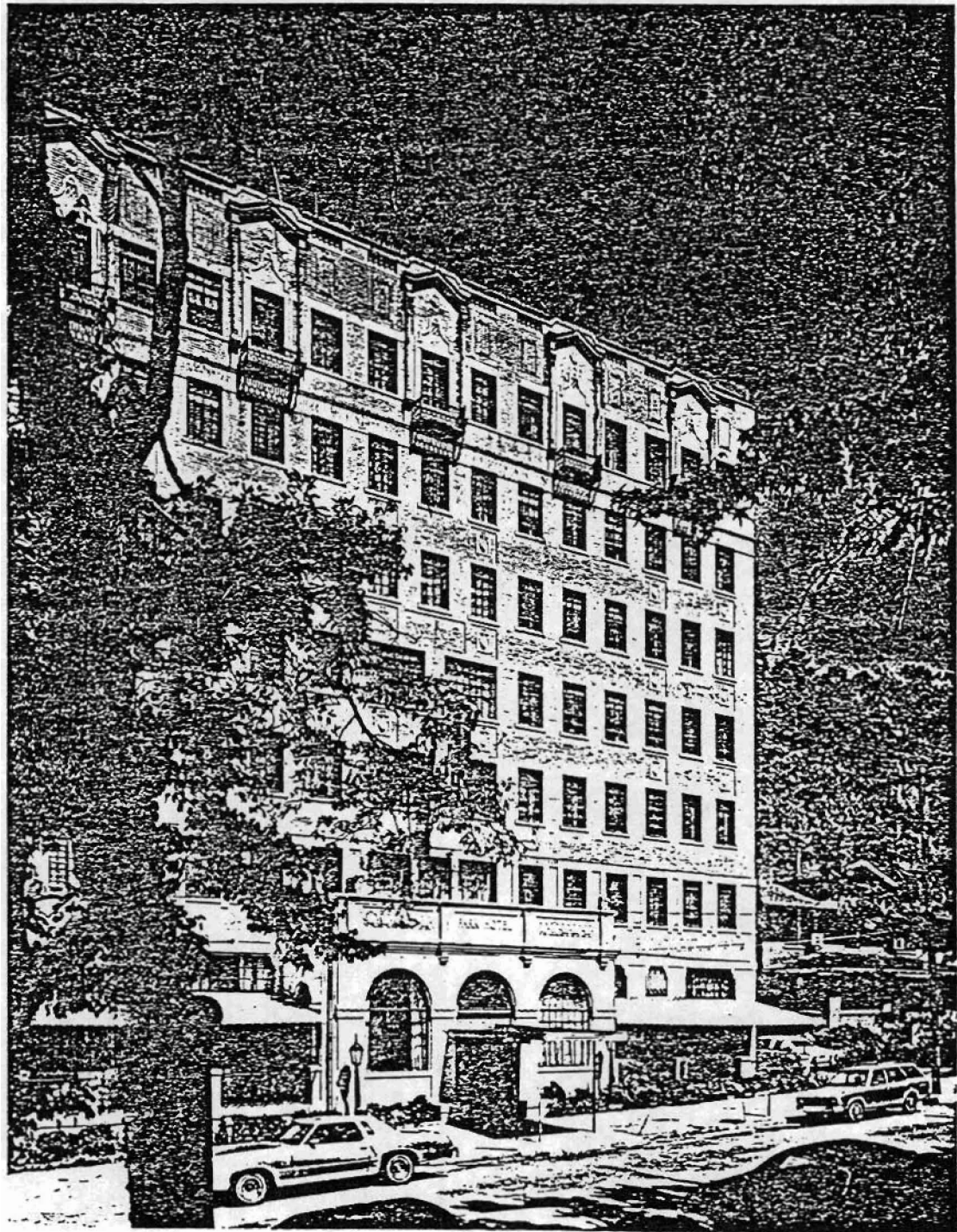
Code: GA-025 (210 Fountain, Hot Springs, AR)

**Physical Description**

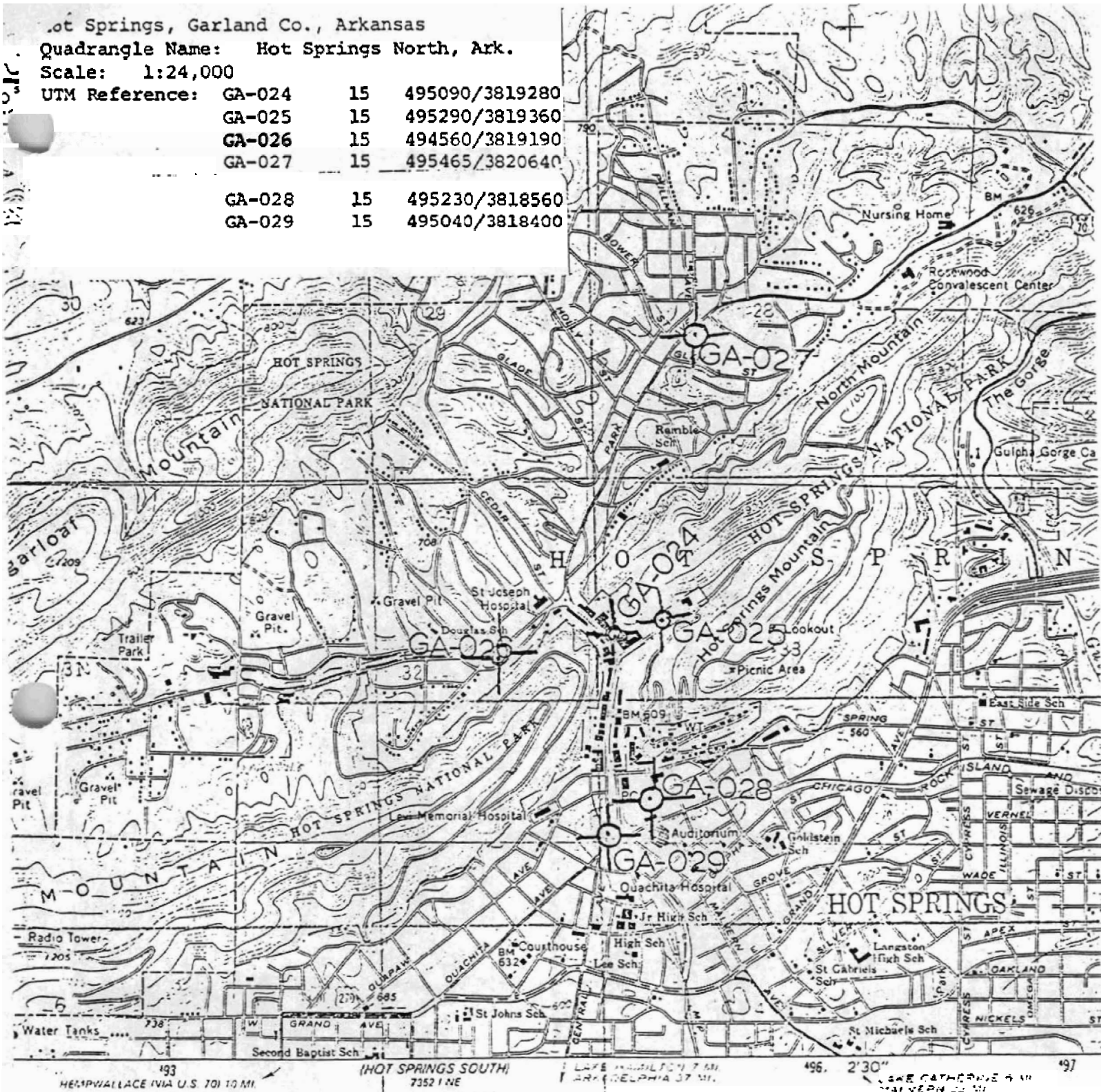
This hotel is a prominent and attractively picturesque element in the streetscape of downtown Hot Springs adjacent to the Bathhouse Row and Hot Springs National Park. Constructed of tan brick and rising seven stories, the structure is one of the tallest ever designed by the firm, yet features overall a small scale and finely detailed decorative elements. The simple rectangular massing has a flat roof. Generally, a decorative eclectic air characterizes this hotel, but there is a strong Spanish motif evident also that seems to derive more from a sum of the parts rather than from traditional or historical Spanish details. Crowned by a flat roof, the simple rectangular structure exhibits on the front elevation a strongly articulated base, middle and crown. On the first floor a slightly projecting entrance wing constructed of cut stone features a handsome double-leaf brass door with plate glass and two large flanking multi-paned casement windows. Round arch fanlights crown all three openings creating an arcade effect. Above, the parapet contains a frieze embellished with foliate and shield motifs and the name of the hotel. To either side of the projecting entrances, a narrow front porch lined with chairs extends. Behind it large multi-paned casement windows articulate the first floor. The decorative wrought iron porch balustrade has a Spanish flavor. Ranges of single casement multi-paned windows organize the middle section of the facade.

**Statement of Significance**

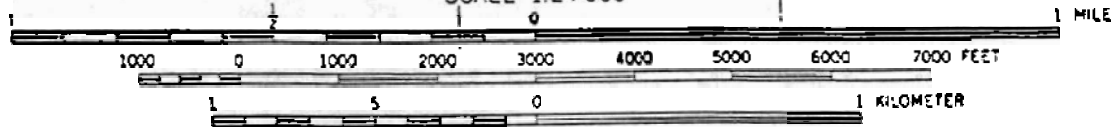
This hotel exemplifies the firm's rather conservative and traditional approach to design. Although the Park Hotel is one of the largest commercial structures ever designed by the firm, it is characterized by a small scale and decoratively eclectic approach and has the feeling of a much smaller building. Within this traditional approach, the design is a handsome, well-integrated one, with finely crafted decorative details. The hotel is appropriate to its resort town setting. The vaguely Spanish flavor lends an appropriate gaiety to the design and like most other older hotels in Hot Springs, the Park incorporates verandahs in its design.



GA-028	15	495230/3818560
GA-029	15	495040/3818400



SCALE 1:24 000



CONTOUR INTERVAL 20 FEET  
NATIONAL GEODETIC VERTICAL DATUM OF 1929

THIS MAP COMPLIES WITH NATIONAL MAP ACCURACY STANDARDS  
FOR SALE BY U.S. GEOLOGICAL SURVEY, DENVER, COLORADO 80225 OR RESTON, VIRGINIA 22092  
AND ARKANSAS GEOLOGICAL COMMISSION, LITTLE ROCK, ARKANSAS 72204  
A FOLDER DESCRIBING TOPOGRAPHIC MAPS AND SYMBOLS IS AVAILABLE ON REQUEST

ARKANSAS  
■  
QUADRANGLE LO