

United States Department of the Interior  
National Park Service

EXP. 12/31/84

National Register of Historic Places  
Inventory—Nomination Form

received
date entered

Continuation sheet 45

Item number 1, 2, 4, 6 & 10 Page 1

INDIVIDUAL DATA SHEET

General Description

Code: FA-021

Congressional District: Second

Name: Farmers State Bank  
Address: 1001 Front Street  
Conway, Arkansas  
County: Faulkner

Current Owner: Central Ark. Savings and Loan  
Address: 1001 Front Street  
Conway, Arkansas 72032

Architectural Information

Architectural Firm: Thompson and Harding

Date of Construction: 1918

Stylistic Influence: Classical Revival

Original Use: Bank

Present Use: Savings and Loan

Geographical Information

UTM Reference: 15 550940/3883180 Acreage: Less than one

Verbal Boundary Description: Block 10, Lot 1, 2, 3, 4

Condition

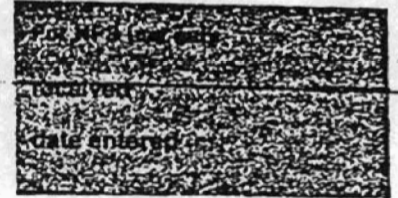
Excellent  
 Good  
 Fair

Deteriorated  
 Ruins  
 Unexposed

Unaltered  
 Altered

United States Department of the Interior  
National Park Service

## National Register of Historic Places Inventory—Nomination Form



Continuation sheet 46

Item number 7 &amp; 8

Page 2

Code: FA-021

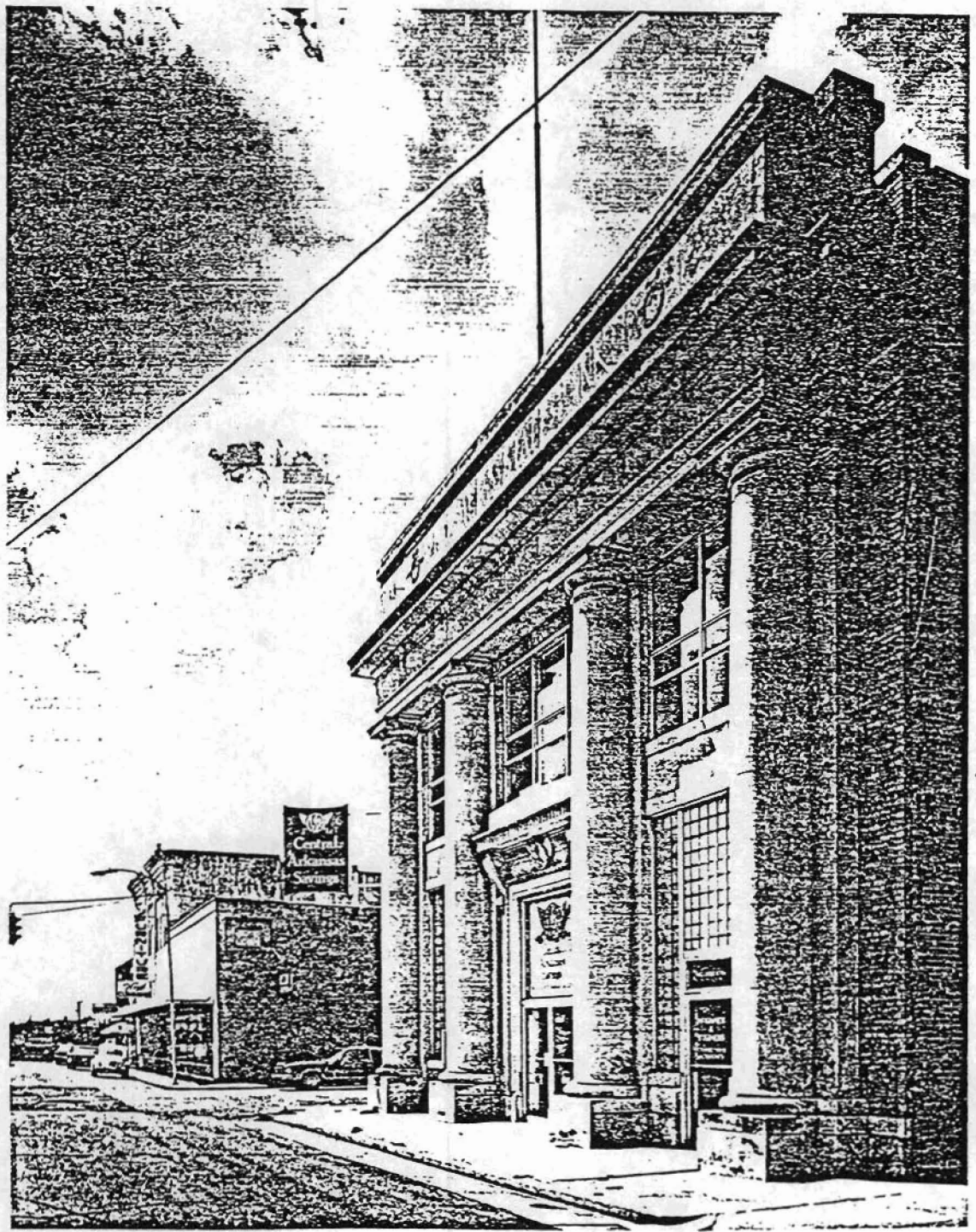
(1001 Front Street, Conway, AR)

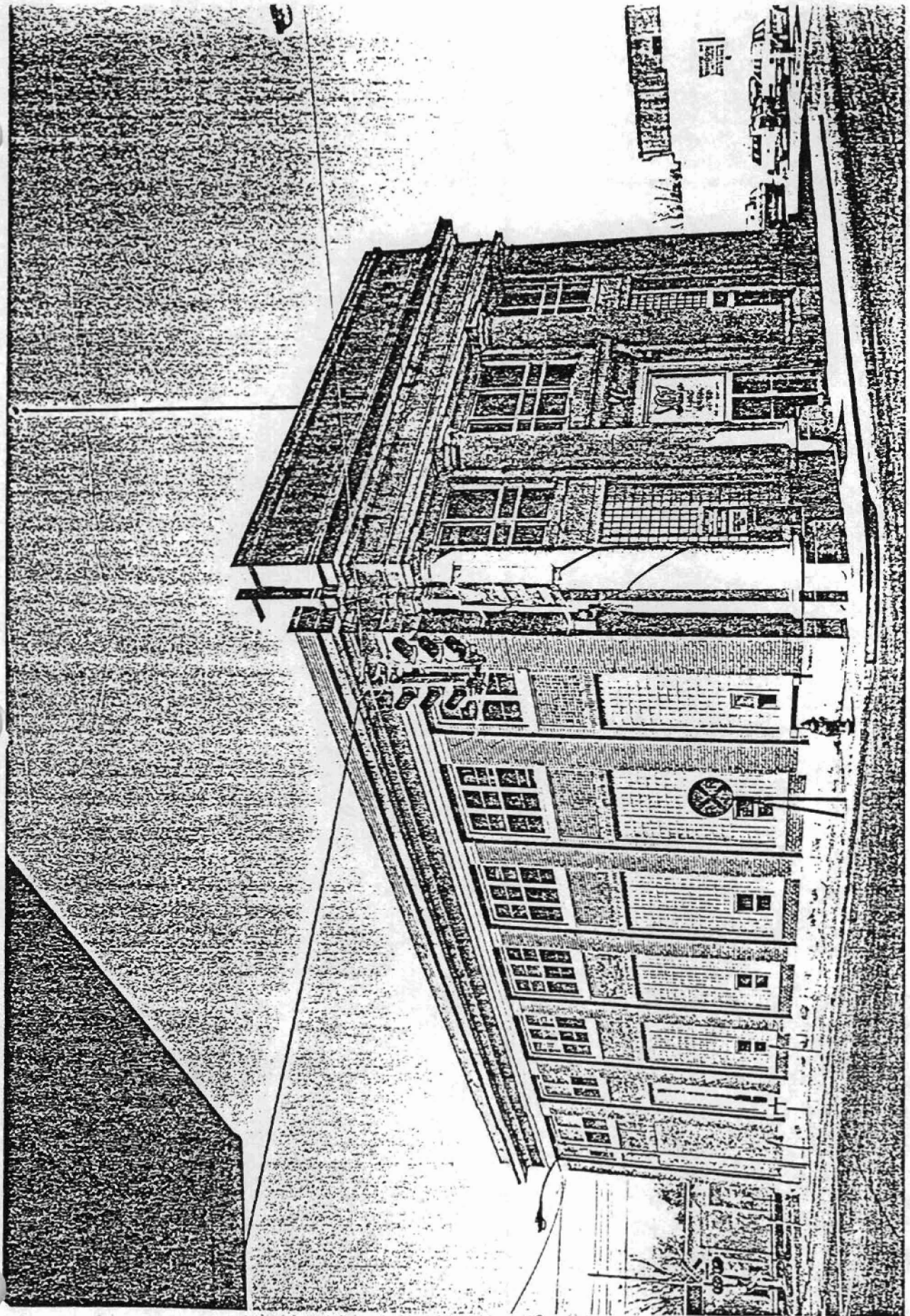
### Physical Description

This two-story bank building occupies a corner site in the downtown commercial district of Conway, presenting a formal, classical-influenced facade to the streetscape. The simple rectangular massing is capped by a flat roof and faced with tan brick; it is set on a low dressed stone foundation. The facade is organized by four monumental stone Tuscan engaged columns set on high plinths supporting an unembellished entablature. The name of the building "Farmers State Bank" and two laurel wreaths are carved on the stone parapet that crowns the simple cornice. The double leaf doorway features a surround of stylized egg and dart molding and is capped by a stone panel enriched with an eagle and laurel wreath motif carving. Crowning this appear a series of classical moldings terminated by a simple cornice capped with a parapet. A range of brick pilasters with simple capitals capped by a simple stone molding organizes the side elevation. The plate glass and glass brick infill are replacements for banks of multi-paned windows.

### Statement of Significance

The Farmers State Bank Building in Conway, Arkansas, was designed by the Thompson and Harding firm in 1918. This two-story building rests on a corner lot at a major intersection in downtown Conway and presents an image of stability and dignity to the streetscape. With its imposing facade featuring four monumental Tuscan engaged columns, this structure is the most formal and imposing of the firm's several Neo-Classical designs for small-town banks.





# structures in Arkansas Represented by the Charles L. Thompson Design Collection

Conway, Faulkner Co., Arkansas

Quadrangle Name: Conway, Ark.

Scale: 1:24,000

UTM Reference:	FA-016	15	550120/3882950
	FA-017	15	550550/3882980
	FA-018	15	550930/3884260
	FA-019	15	550830/3883870

	FA-020	15	550940/3884010
	FA-021	15	550940/3883180
	FA-022	15	550400/3882700
	FA-023	15	549440/3882640

