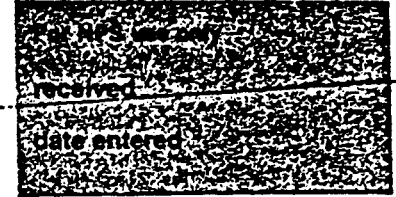


United States Department of the Interior
National Park Service

National Register of Historic Places
Inventory—Nomination Form



Continuation sheet 134 Item number 1,2,4,6, & 10 Page 1

INDIVIDUAL DATA SHEET

General Description

Code: AS-003

Congressional District: Fourth

Name: Pugh House
Address: Portland, Arkansas

Current Owner: Mr. and Mrs. Benton Newcome

County: Ashley

Address: Box 215
Portland, Arkansas 71663

Architectural Information

Architectural Firm: Charles Thompson

Date of Construction: 1905-07

Stylistic Influence: Classical Revival

Original Use: Residence

Present Use: Residence

Geographical Information

UTM Reference: 15 638500/3678520

Acreage: Less than one

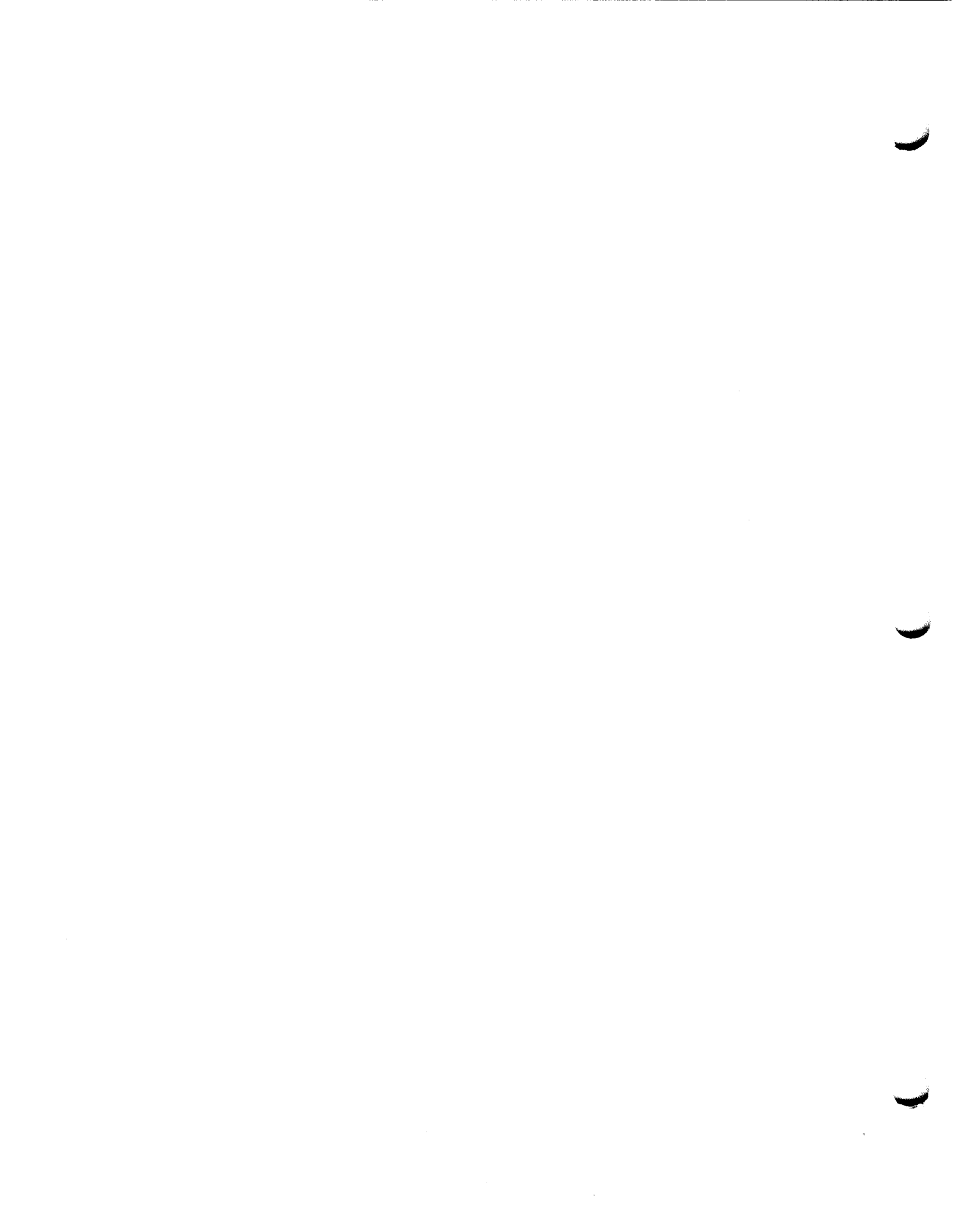
Verbal Boundary Description: West Daniels Addition to the City of Portland
Part Lot 14, Block 2

Condition

Excellent
 Good
 Fair

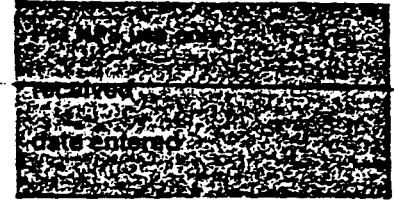
Deteriorated
 Ruins
 Unexposed

Unaltered
 Altered



United States Department of the Interior
National Park Service

National Register of Historic Places Inventory—Nomination Form



Continuation sheet 135

Item number 7 & 8

Page 2

Code: AS-003

(Pugh House, Portland, AR)

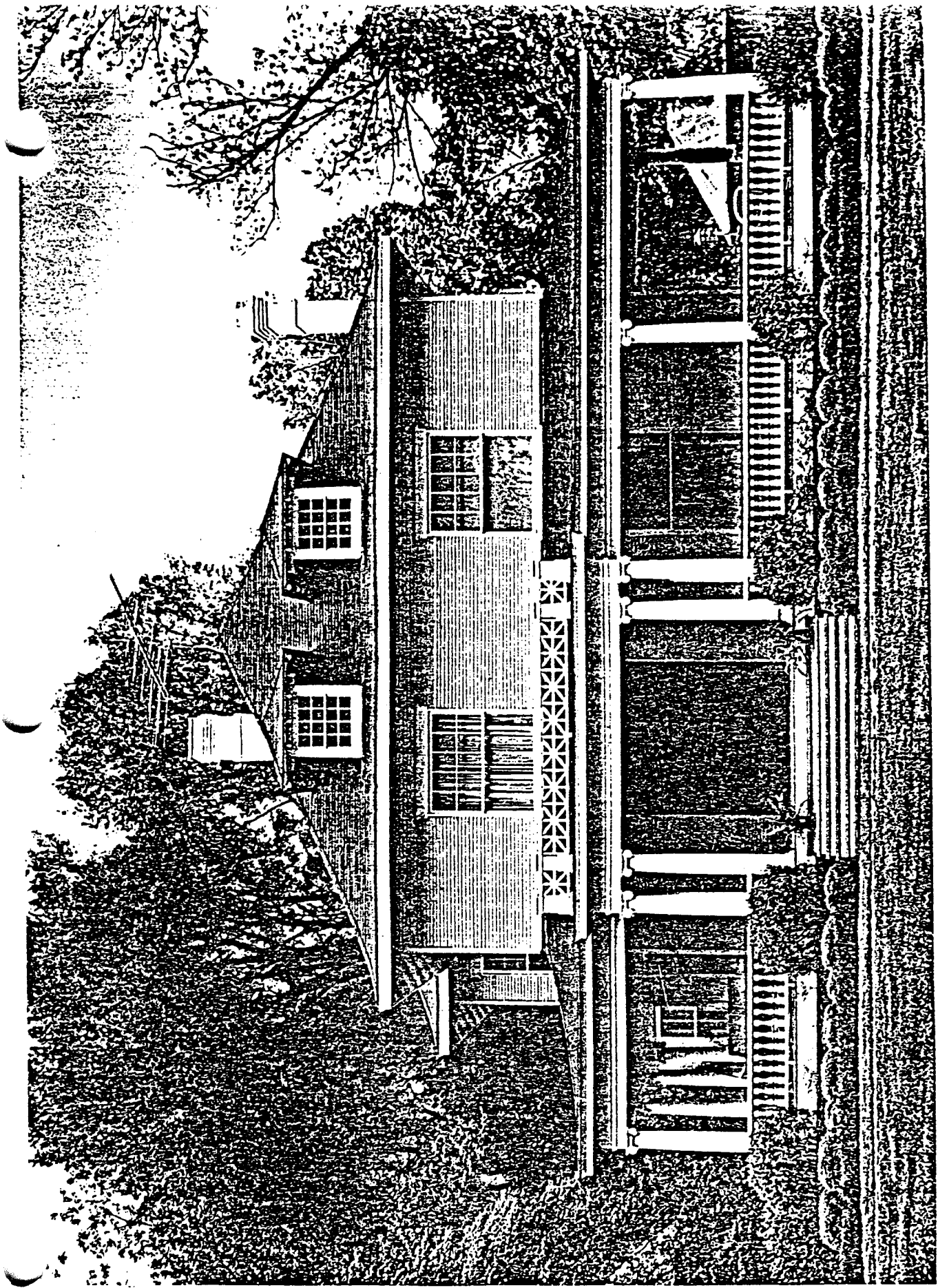
Physical Description

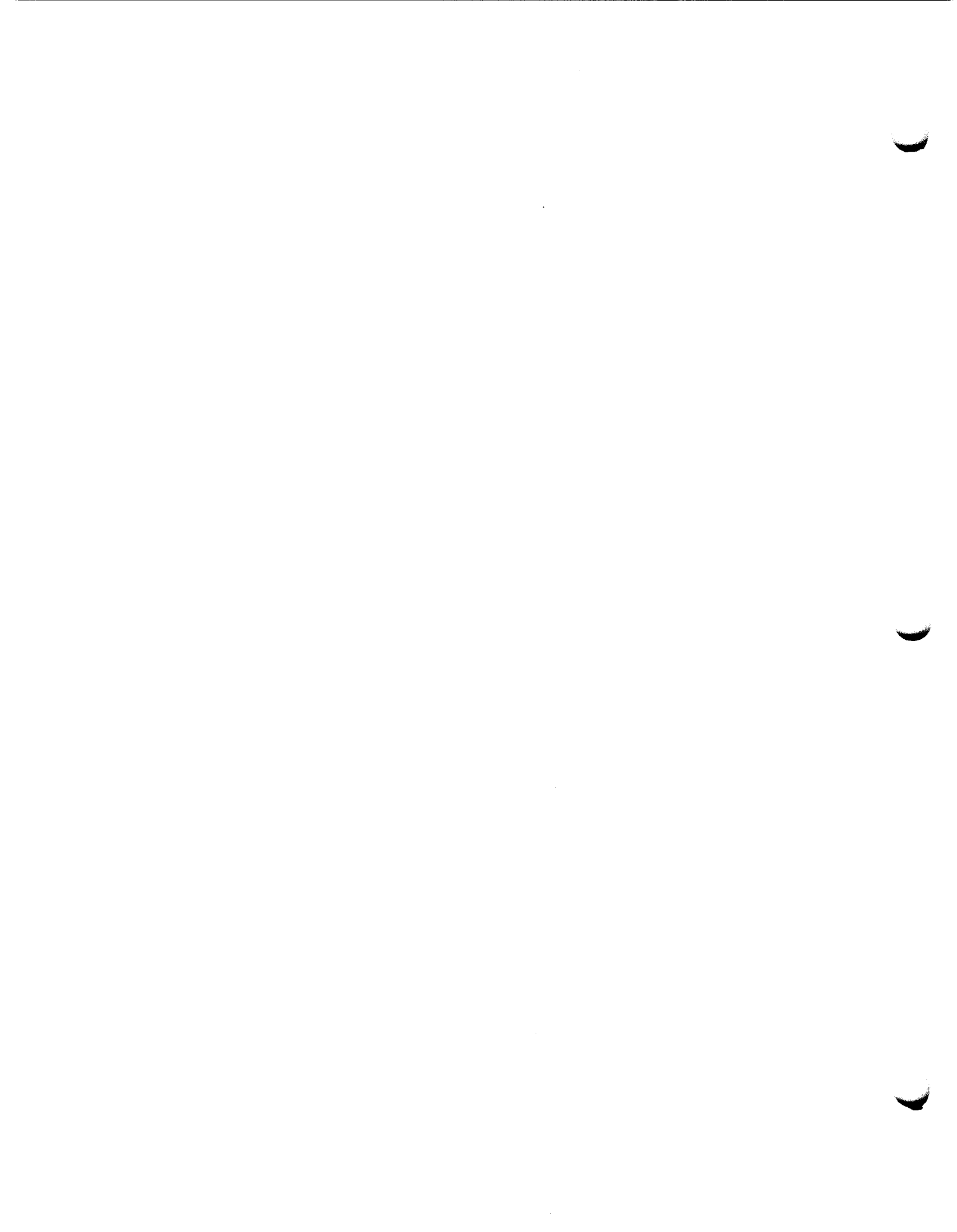
Set well back and glimpsed through towering shade trees along a quiet lane, this two-story frame house, designed around 1905 presents a vivid image of a comfortable and spacious Southern home. The simple outlines of the foursquare massing and hipped roof with flared eaves are enlivened by classically-inspired ornamentation and a huge front porch which wraps half-way around both sides of the house. Unfluted Ionic columns support a full but unembellished entablature and the hipped roof of the porch. At the top of a wide flight of steps, the porch entry is marked by a slightly projecting section supported by twin Ionic columns and embellished with an upper balustrade in an English neo-classical motif. The lower balustrade features urn-shaped balusters. Two gable roof dormers with multi-paned sash windows light the attic. The sash windows have ten-over-one-lights. The wide living room window is plate glass with a leaded glass transom.

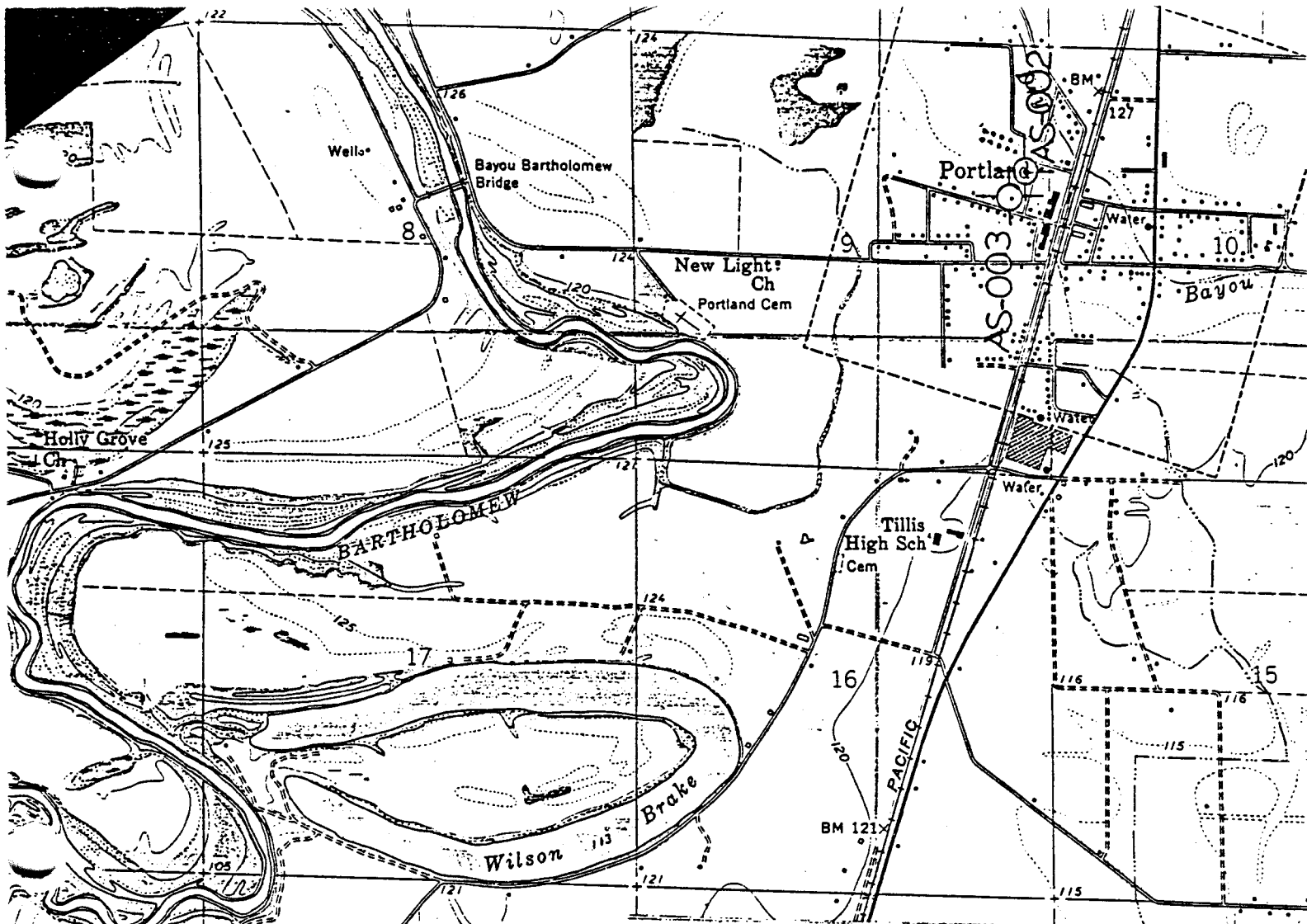
Statement of Significance

Charles L. Thompson's ability to take a familiar plan utilized often by his architectural firm and effectively fit it into different settings is exemplified in the Pugh House in Portland, Arkansas. Located in the southeastern delta land of the state, this house rests on a spacious expanse of tree-shaded lawn and presents the image of a spacious southern home. Constructed ca. 1905, the Pugh House is representative of the foursquare massing often used by the Thompson firm. Although the house features the usual simple massing of foursquare design, there is a distinctiveness in the total effect presented. This distinction comes from the effective appearance of a large wrap-around porch which features Ionic columns and an upper balustrade with an English neo-classical motif.





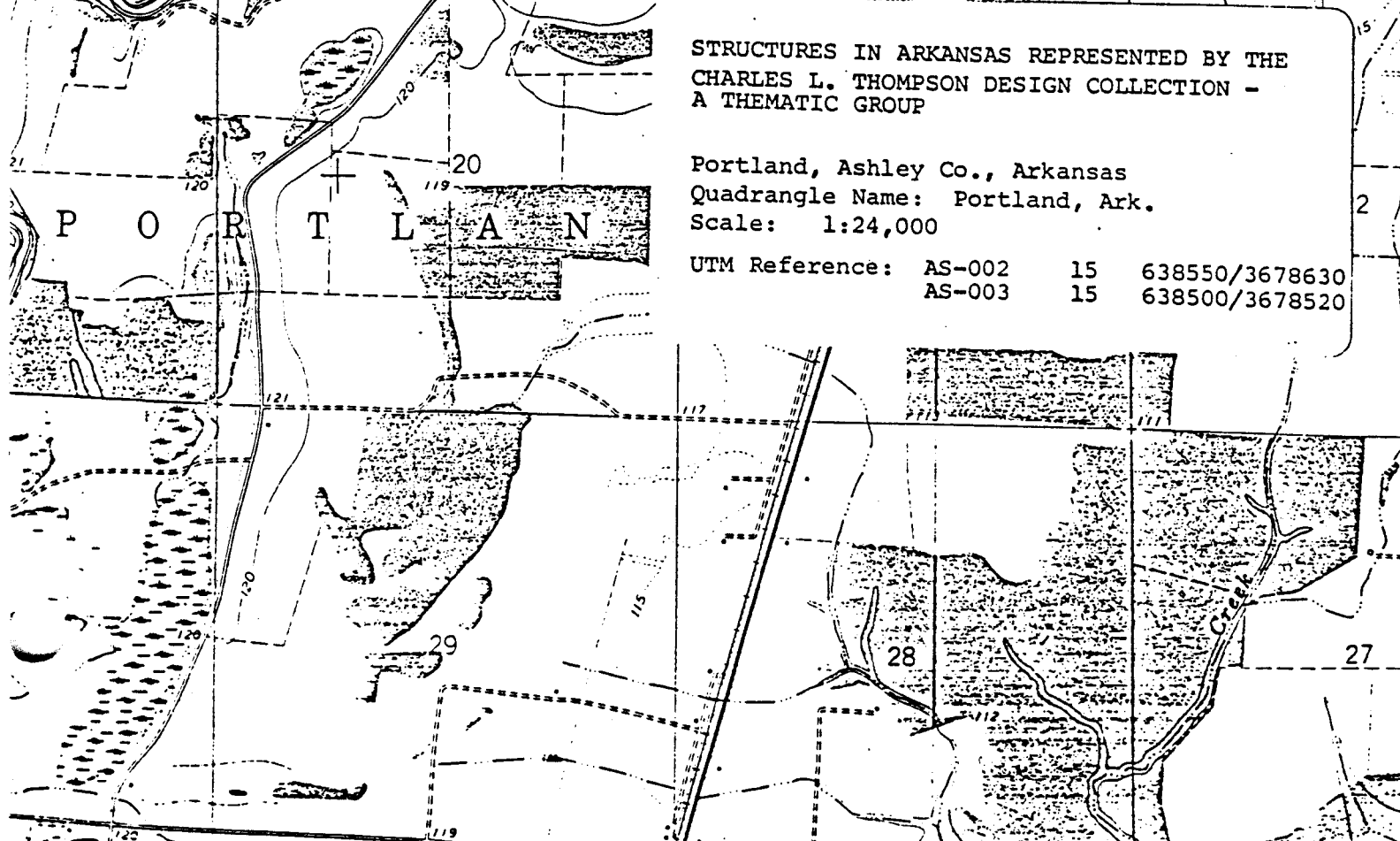




STRUCTURES IN ARKANSAS REPRESENTED BY THE
 CHARLES L. THOMPSON DESIGN COLLECTION -
 A THEMATIC GROUP

Portland, Ashley Co., Arkansas
 Quadrangle Name: Portland, Ark.
 Scale: 1:24,000

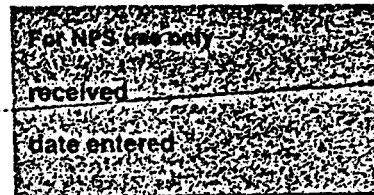
UTM Reference:	AS-002	15	638550/3678630
	AS-003	15	638500/3678520





United States Department of the Interior
National Park Service

National Register of Historic Places
Inventory—Nomination Form



Continuation sheet 134 Item number 1,2,4,6, & 10 Page 1

INDIVIDUAL DATA SHEET

General Description

Code: AS-003

Congressional District: Fourth

Name: Pugh House
Address: Portland, Arkansas

Current Owner: Mr. and Mrs. Benton Newcome

County: Ashley

Address: Box 215
Portland, Arkansas 71663

Architectural Information

Architectural Firm: Charles Thompson

Date of Construction: 1905-07

Stylistic Influence: Classical Revival

Original Use: Residence

Present Use: Residence

Geographical Information

UTM Reference: 15 638500/3678520

Acreage: Less than one

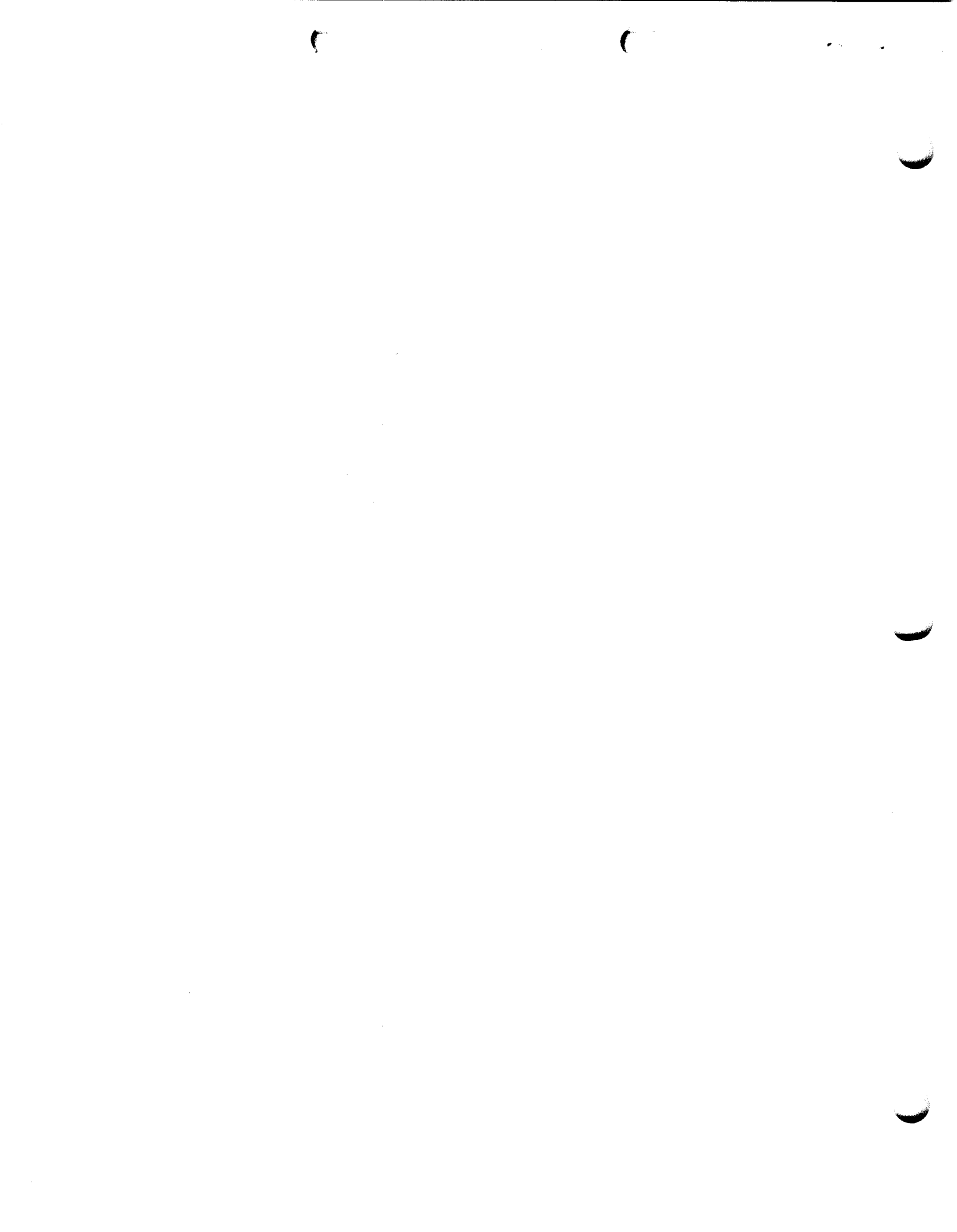
Verbal Boundary Description: West Daniels Addition to the City of Portland
Part Lot 14, Block 2

Condition

Excellent
 Good
 Fair

Deteriorated
 Ruins
 Unexposed

Unaltered
 Altered



United States Department of the Interior
National Park Service

National Register of Historic Places Inventory—Nomination Form

For NPS Use Only
received
date entered

Continuation sheet 135

Item number 7 & 8

Page 2

Code: AS-003 (Pugh House, Portland, AR)

Physical Description

Set well back and glimpsed through towering shade trees along a quiet lane, this two-story frame house, designed around 1905 presents a vivid image of a comfortable and spacious Southern home. The simple outlines of the foursquare massing and hipped roof with flared eaves are enlivened by classically-inspired ornamentation and a huge front porch which wraps half-way around both sides of the house. Unfluted Ionic columns support a full but unembellished entablature and the hipped roof of the porch. At the top of a wide flight of steps, the porch entry is marked by a slightly projecting section supported by twin Ionic columns and embellished with an upper balustrade in an English neo-classical motif. The lower balustrade features urn-shaped balusters. Two gable roof dormers with multi-paned sash windows light the attic. The sash windows have ten-over-one-lights. The wide living room window is plate glass with a leaded glass transom.

Statement of Significance

Charles L. Thompson's ability to take a familiar plan utilized often by his architectural firm and effectively fit it into different settings is exemplified in the Pugh House in Portland, Arkansas. Located in the southeastern delta land of the state, this house rests on a spacious expanse of tree-shaded lawn and presents the image of a spacious southern home. Constructed ca. 1905, the Pugh House is representative of the foursquare massing often used by the Thompson firm. Although the house features the usual simple massing of foursquare design, there is a distinctiveness in the total effect presented. This distinction comes from the effective appearance of a large wrap-around porch which features Ionic columns and an upper balustrade with an English neo-classical motif.

