

United States Department of the Interior
National Park ServiceNational Register of Historic Places
Registration Form

This form is for use in nominating or requesting determinations of eligibility for individual properties or districts. See instructions in *Guidelines for Completing National Register Forms* (National Register Bulletin 16). Complete each item by marking "x" in the appropriate box or by entering the requested information. If an item does not apply to the property being documented, enter "N/A" for "not applicable." For functions, styles, materials, and areas of significance, enter only the categories and subcategories listed in the instructions. For additional space use continuation sheets (Form 10-900a). Type all entries.

1. Name of Property

historic name Patman House
other names/site number Resource # WH0213

2. Location

street & number Mountain & Jackson Streets ☐ not for publication N/A
city, town Pangburn ☐ vicinity N/A
state Arkansas code AR county White code 145 zip code 72121

3. Classification

Ownership of Property

- ☒ private
☐ public-local
☐ public-State
☐ public-Federal

Category of Property

- ☒ building(s)
☐ district
☐ site
☐ structure
☐ object

Number of Resources within Property

Contributing	Noncontributing
<u>1</u>	<u> </u> buildings
<u> </u>	<u> </u> sites
<u> </u>	<u> </u> structures
<u> </u>	<u> </u> objects
<u>1</u>	<u>0</u> Total

Name of related multiple property listing:

Historic and Architectural Resources
of White County, ArkansasNumber of contributing resources previously
listed in the National Register N/A

4. State/Federal Agency Certification

As the designated authority under the National Historic Preservation Act of 1966, as amended, I hereby certify that this
☒ nomination ☐ request for determination of eligibility meets the documentation standards for registering properties in the
National Register of Historic Places and meets the procedural and professional requirements set forth in 36 CFR Part 60.
In my opinion, the property ☒ meets ☐ does not meet the National Register criteria. ☐ See continuation sheet.

Signature of certifying official

Date

Arkansas Historic Preservation Program

State or Federal agency and bureau

In my opinion, the property ☐ meets ☐ does not meet the National Register criteria. ☐ See continuation sheet.

Signature of commenting or other official

Date

State or Federal agency and bureau

5. National Park Service Certification

I, hereby, certify that this property is:

- ☐ entered in the National Register.
☐ See continuation sheet.
☐ determined eligible for the National
Register. ☐ See continuation sheet.
☐ determined not eligible for the
National Register.
☐ removed from the National Register.
☐ other, (explain:)

Signature of the Keeper

Date of Action

6. Function or Use

Historic Functions (enter categories from instructions)

DOMESTIC/ Single Dwelling

Current Functions (enter categories from instructions)

DOMESTIC/ Single Dwelling

7. Description

Architectural Classification

(enter categories from instructions)

OTHER: Vernacular/ Double-Pen/

Colonial Revival

Materials (enter categories from instructions)

foundation brick

walls novelty siding

roof metal

other

Describe present and historic physical appearance.

continued

8. Statement of Significance

Certifying official has considered the significance of this property in relation to other properties:

☐ nationally ☐ statewide ☒ locally

Applicable National Register Criteria ☐ A ☐ B ☒ C ☐ D

Criteria Considerations (Exceptions) ☐ A ☐ B ☐ C ☐ D ☐ E ☐ F ☐ G

Areas of Significance (enter categories from instructions)

ARCHITECTURE

Period of Significance

c. 1920

Significant Dates

c. 1920

Cultural Affiliation

N/A

Significant Person

N/A

Architect/Builder

unknown

State significance of property, and justify criteria, criteria considerations, and areas and periods of significance noted above.

☒ See continuation sheet

9. Major Bibliographical References

See "Historic and Architectural Resources of White County, Arkansas," Section H.

Previous documentation on file (NPS):

- ☐ preliminary determination of individual listing (36 CFR 67)
has been requested
- ☐ previously listed in the National Register
- ☐ previously determined eligible by the National Register
- ☐ designated a National Historic Landmark
- ☐ recorded by Historic American Buildings
Survey # _____
- ☐ recorded by Historic American Engineering
Record # _____

☐ See continuation sheet

Primary location of additional data:

- ☐ State historic preservation office
- ☐ Other State agency
- ☐ Federal agency
- ☐ Local government
- ☐ University
- ☐ Other

Specify repository: _____

10. Geographical Data

Acreage of property _____

UTM References

A
Zone Easting Northing

C

B
Zone Easting Northing

D

☒ See continuation sheet

Verbal Boundary Description

☒ See continuation sheet

Boundary Justification

☒ See continuation sheet

11. Form Prepared By

name/title Kenneth Story, National Register Coordinator

organization Arkansas Historic Preservation Program date 13 April, 1990

street & number 225 E Markham, Suite 300 telephone 501-371-2763

city or town Little Rock state Arkansas zip code 72201

United States Department of the Interior
National Park Service

National Register of Historic Places Continuation Sheet

Section number 7 Page 1

Description

The Patman House is a one-and-one-half story, gable roof, wood frame vernacular residence with slight Colonial Revival influences. It features a T-shaped plan with a rear ell placed centrally on the rear elevation of the double-pen eastern or front section of the house. A shed projects from the northern side of the ell and a shorter, screened porch extends from the southern side. A single brick interior chimney rises from the intersection of the "T" in the roofline. The house is covered with a corrugated metal roof, sheathed with novelty siding, and supported on brick piers.

The eastern or front elevation is dominated by the central doghouse dormer, with its pair of one-over-one wood sash windows, and by the central shed roof porch below, which shelters the double entry below. Two large one-over-one wood sash windows are placed to either side of the entries.

The gable ends of the northern and southern elevations are virtually identical: a single one-over-one wood sash window is placed centrally on each floor. The shed on the northern elevation is lighted at either end by a single, square fixed pane window and in the center by a one-over-one wood sash window. The screened porch on the southern elevation is accessed by a door placed just to the east of center and entered by a door placed to the east in the ell. A single one-over-one wood sash window is placed to the west of the door and lights the ell behind.

The western elevation is lighted by one one-over-one wood sash window in the center of the gable end of the ell.

This structure was originally a frame dogtrot residence, possibly dating from the late 1890's, but was remodeled by the early 1920's into a double pen plan house when the passageway was enclosed and the rudimentary Colonial Revival details were added (gable returns, box cornices, delicate capitals at the top of the corner trim, beneath the friezeboards). The dormer and new chimney were also added at this time (the earlier chimney projected from the northern slope of the ell, toward the western end). The earlier screen door with Eastlake spindlework seen on the front elevation was probably salvaged from one of the earlier entrances in the passageway. All of the window trim was also added in the 1920's.

**United States Department of the Interior
National Park Service****National Register of Historic Places
Continuation Sheet**Section number 8 Page 1

Significance

The Patman House survives as the best example in Pangburn of a vernacular, double pen residence with rudimentary Colonial Revival details; it is equally significant for its status as an intact example of the evolution such vernacular structures underwent in railroad towns such as Pangburn, where the sudden influx of prosperity brought on by the railroad both enabled and encouraged the local residents to update and improve their earlier, more rustic homes. It is being nominated under Criterion C with local significance.

Pangburn had been an extremely rural, and as of 1899, an economically depressed town until the construction of the Missouri and North Arkansas rail line in 1906. The routing of this line through Pangburn -- which extended from Harrison to Helena, Arkansas -- provided its residents with both the means to market their agricultural and forest products directly to the outside world and the access to the popular fashions and trends which were sweeping the nation. With this progress came a desire to live in more fashionable, current homes. The Patman House, with its obviously filled dogtrot and the addition of Colonial Revival trim and details, is a remarkably intact example of the manifestation of those changing tastes and their demand for satisfaction.

United States Department of the Interior
National Park Service

National Register of Historic Places Continuation Sheet

Section number 10 Page 1

Acreage of property: Less than one

UTM References:

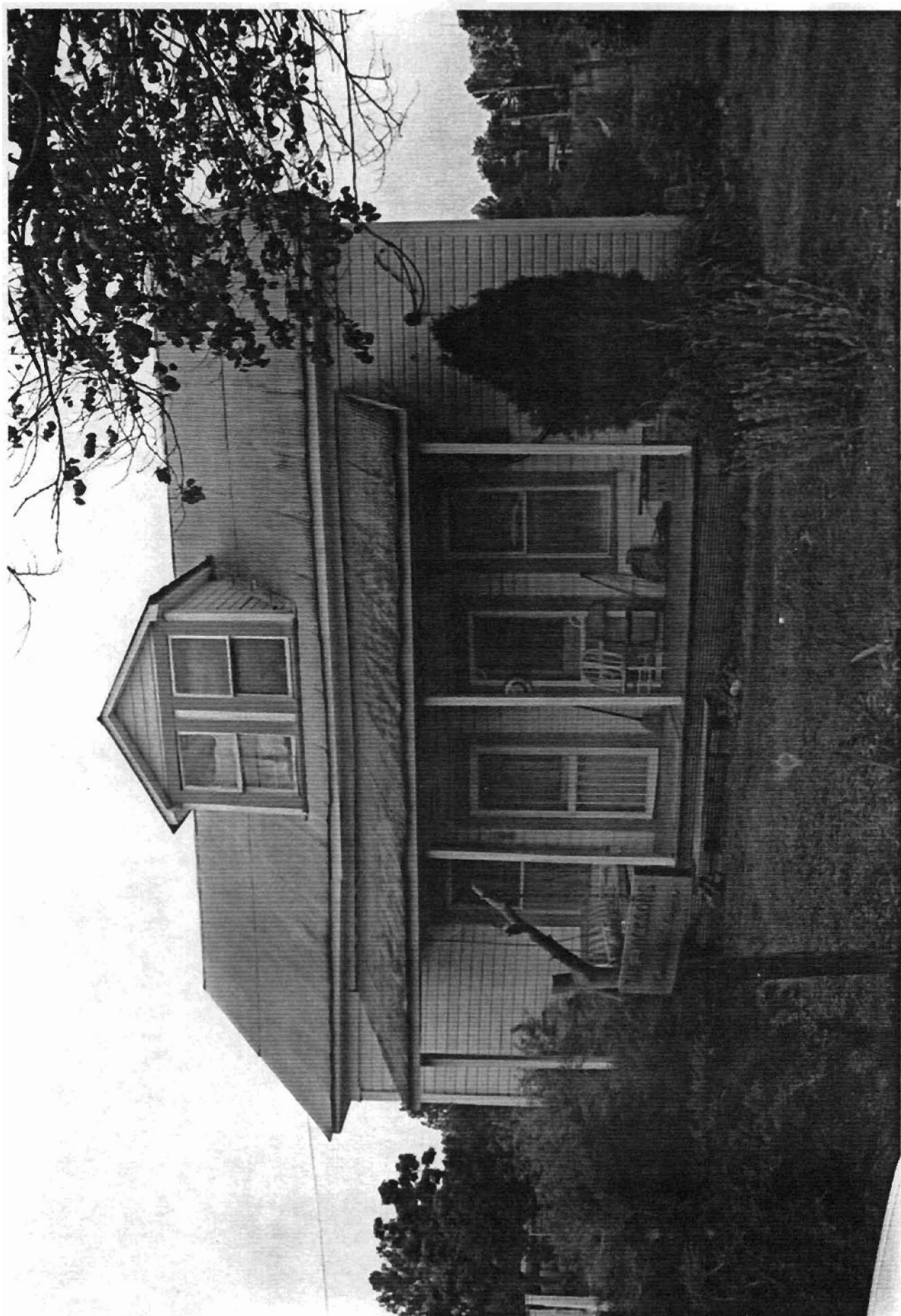
A 15/605170/3920200

Verbal Boundary Description:

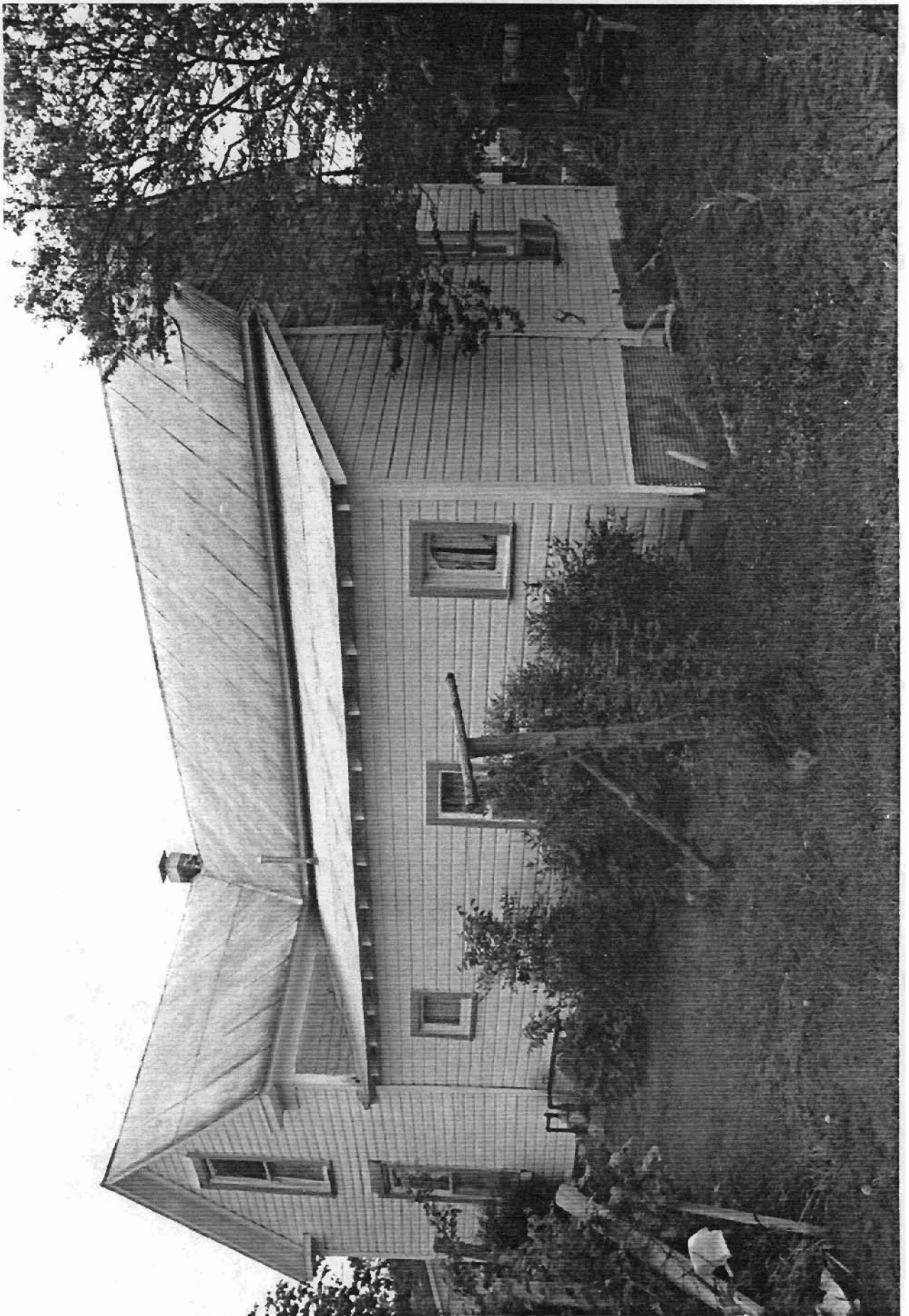
Lots 10-12, Block 49, Churchill Addition to the Town of Pangburn.

Boundary Justification:

This boundary includes all the property historically associated with this resource.







Historic and Architectural Resources
 of White County, Arkansas
 White County, Arkansas
 Resource #WH0240: 15/605660/3920520
 WH0257: 15/605560/3920940
 WH0213: 15/605170/3920200
 WH0251: 15/605720/3920860
 WH0233: 15/605500/3920720
 WH0222: 15/605280/3920320
 WH0220: 15/605160/3920420

Pangburn Quadrangle
 1:24000

