

NR Listed 7/20/92

United States Department of the Interior
National Park ServiceNational Register of Historic Places
Registration Form

This form is for use in nominating or requesting determinations of eligibility for individual properties or districts. See instructions in *Guidelines for Completing National Register Forms* (National Register Bulletin 16). Complete each item by marking "x" in the appropriate box or by entering the requested information. If an item does not apply to the property being documented, enter "N/A" for "not applicable." For functions, styles, materials, and areas of significance, enter only the categories and subcategories listed in the instructions. For additional space use continuation sheets (Form 10-900a). Type all entries.

1. Name of Property

historic name "Storm Cellar," William Howell House

other names/site number WH0182

2. Location

street & number County Road 47

☐ not for publication N/A

city, town Clay

☐ vicinity N/A

state Arkansas

code AR

county White

code AR 145

zip code 72143

3. Classification

Ownership of Property

☒ private☐ public-local☐ public-State☐ public-Federal

Category of Property

☒ building(s)☐ district☐ site☐ structure☐ object

Number of Resources within Property

Contributing

Noncontributing

1

buildings

sites

structures

1

objects

Total

Name of related multiple property listing:

Historic and Architectural Resources of

White County, Arkansas

Number of contributing resources previously

listed in the National Register N/A

4. State/Federal Agency Certification

As the designated authority under the National Historic Preservation Act of 1966, as amended, I hereby certify that this nomination ☐ request for determination of eligibility meets the documentation standards for registering properties in the National Register of Historic Places and meets the procedural and professional requirements set forth in 36 CFR Part 60.

In my opinion, the property ☒ meets ☐ does not meet the National Register criteria. See continuation sheet.

Signature of certifying official

Arkansas Historic Preservation Program

Date

6-17-91

State or Federal agency and bureau

In my opinion, the property ☐ meets ☐ does not meet the National Register criteria. ☐ See continuation sheet.

Signature of commenting or other official

Date

State or Federal agency and bureau

5. National Park Service Certification

I, hereby, certify that this property is:

☐ entered in the National Register.☐ See continuation sheet.☐ determined eligible for the NationalRegister. ☐ See continuation sheet.☐ determined not eligible for the

National Register.

☐ removed from the National Register.☐ other, (explain:)

Signature of the Keeper

Date of Action

6. Function or Use

Historic Functions (enter categories from instructions)

Current Functions (enter categories from instructions)

Domestic/Secondary Structure

Domestic/Secondary Structure

7. Description

Architectural Classification

(enter categories from instructions)

Materials (enter categories from instructions)

Other: Rough-Hewn Fieldstone Masonry

foundation Stone

walls Stone

roof Metal

other

Describe present and historic physical appearance.

8. Statement of Significance

Certifying official has considered the significance of this property in relation to other properties:

☐ nationally ☐ statewide ☒ locally

• Applicable National Register Criteria ☐ A ☐ B ☒ C ☐ D

Criteria Considerations (Exceptions) ☐ A ☐ B ☐ C ☐ D ☐ E ☐ F ☐ G

Areas of Significance (enter categories from instructions)

Architecture

Period of Significance

c. 1930

Significant Dates

N/A

Cultural Affiliation

N/A

Significant Person

N/A

Architect/Builder

Unknown

State significance of property, and justify criteria, criteria considerations, and areas and periods of significance noted above.

☒ See continuation sheet

9. Major Bibliographical References

See "Historic and Architectural Resources of White County, Arkansas," Section H.

Previous documentation on file (NPS):

- ☐ preliminary determination of individual listing (36 CFR 67)
has been requested
- ☐ previously listed in the National Register
- ☐ previously determined eligible by the National Register
- ☐ designated a National Historic Landmark
- ☐ recorded by Historic American Buildings
Survey # _____
- ☐ recorded by Historic American Engineering
Record # _____

☐ See continuation sheet

Primary location of additional data:

- ☐ State historic preservation office
- ☐ Other State agency
- ☐ Federal agency
- ☐ Local government
- ☐ University
- ☐ Other

Specify repository: _____

10. Geographical Data

Acreage of property _____

UTM References

A

Zone	Easting	Northing
------	---------	----------

C

Zone	Easting	Northing
------	---------	----------

B

Zone	Easting	Northing
------	---------	----------

D

Zone	Easting	Northing
------	---------	----------

☒ See continuation sheet

Verbal Boundary Description

☒ See continuation sheet

Boundary Justification

☒ See continuation sheet

11. Form Prepared By

name/title Kenneth Story, Architectural Historian

organization Arkansas Historic Preservation Program date 6/13/91

street & number 225 E. Markham, Suite 300 telephone (501) 324-9346

city or town Little Rock state Arkansas zip code 72201

**United States Department of the Interior
National Park Service**

**National Register of Historic Places
Continuation Sheet**

Section number 7 Page 1

The Storm Cellar at the William Howell House is a single story, stone masonry storm cellar. It is square in plan. Its metal gable roof and heavy, fieldstone walls are supported by a continuous fieldstone foundation. The southern wall is relieved only by a central, wood plank door. The three other elevations are blank.

United States Department of the Interior
National Park ServiceNational Register of Historic Places
Continuation SheetSection number 8 Page 1

Significance

Criterion C, local significance

The "Storm Cellar" (so-called due to some doubt as to its original function: the local oral tradition maintains that it served the family as a storm cellar, and yet its overall form and design resembles a number of outbuildings around the state that have been documented as food storage buildings. Nevertheless, it is certainly a secondary structure associated with the house itself, and the locally common name has been retained) at the William Howell House is significant in the county as the best example of a fieldstone masonry storm cellar from this era of White County history (Boom and Bust: The War and Depression Years, 1914-1939; Section E,4) and as an unusual example of a protective shelter obviously overbuilt by the hand of a vernacular craftsman. Its heavy, spreading stone walls and low aspect lend it a rough-hewn, organic quality that is both appropriate to its purported purpose and aesthetically successful.

United States Department of the Interior
National Park Service

National Register of Historic Places
Continuation Sheet

Section number 10 Page 1

Acreage of property: Less than one

UTM References:

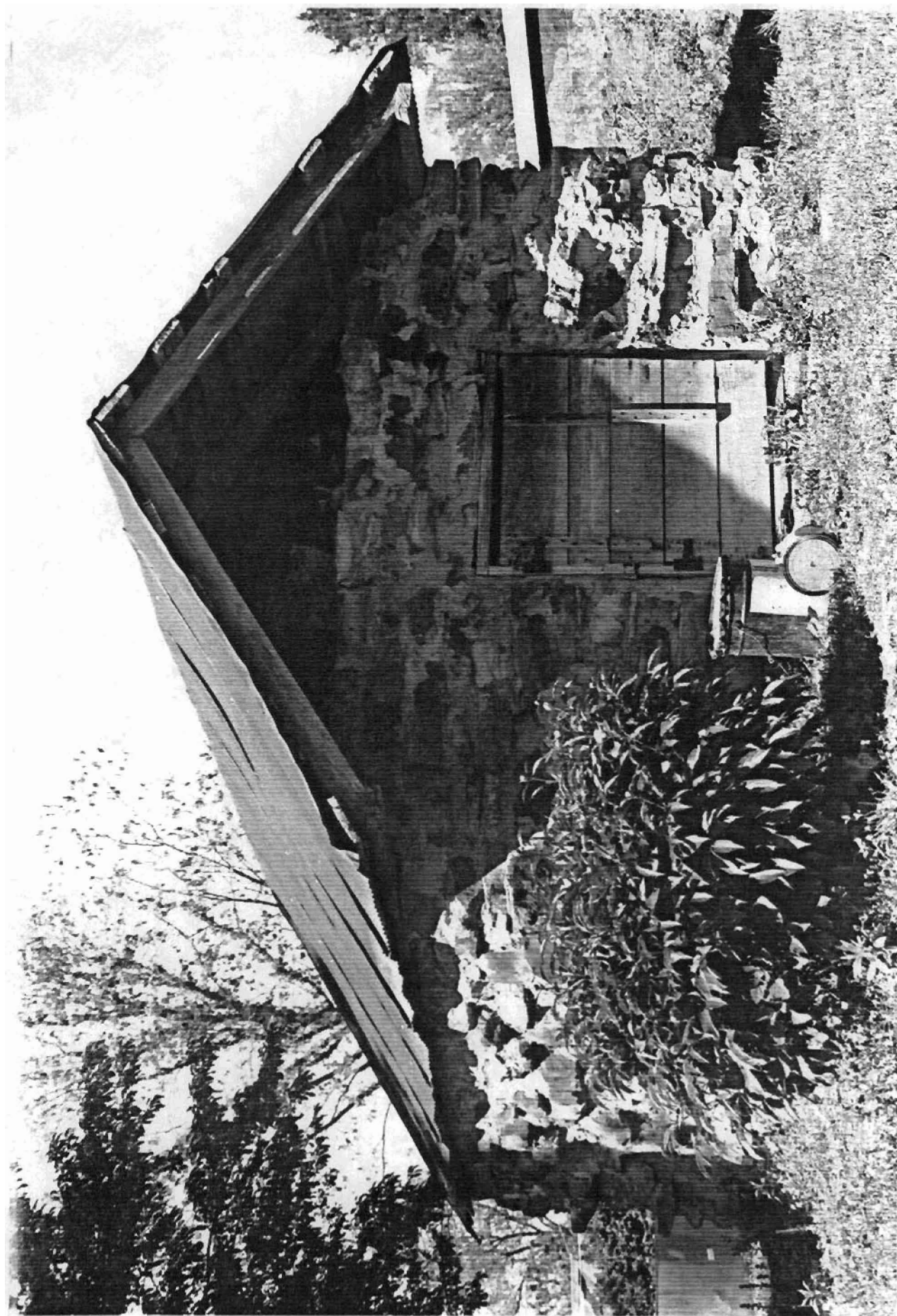
A 15/610340/3917470

Verbal Boundary Description:

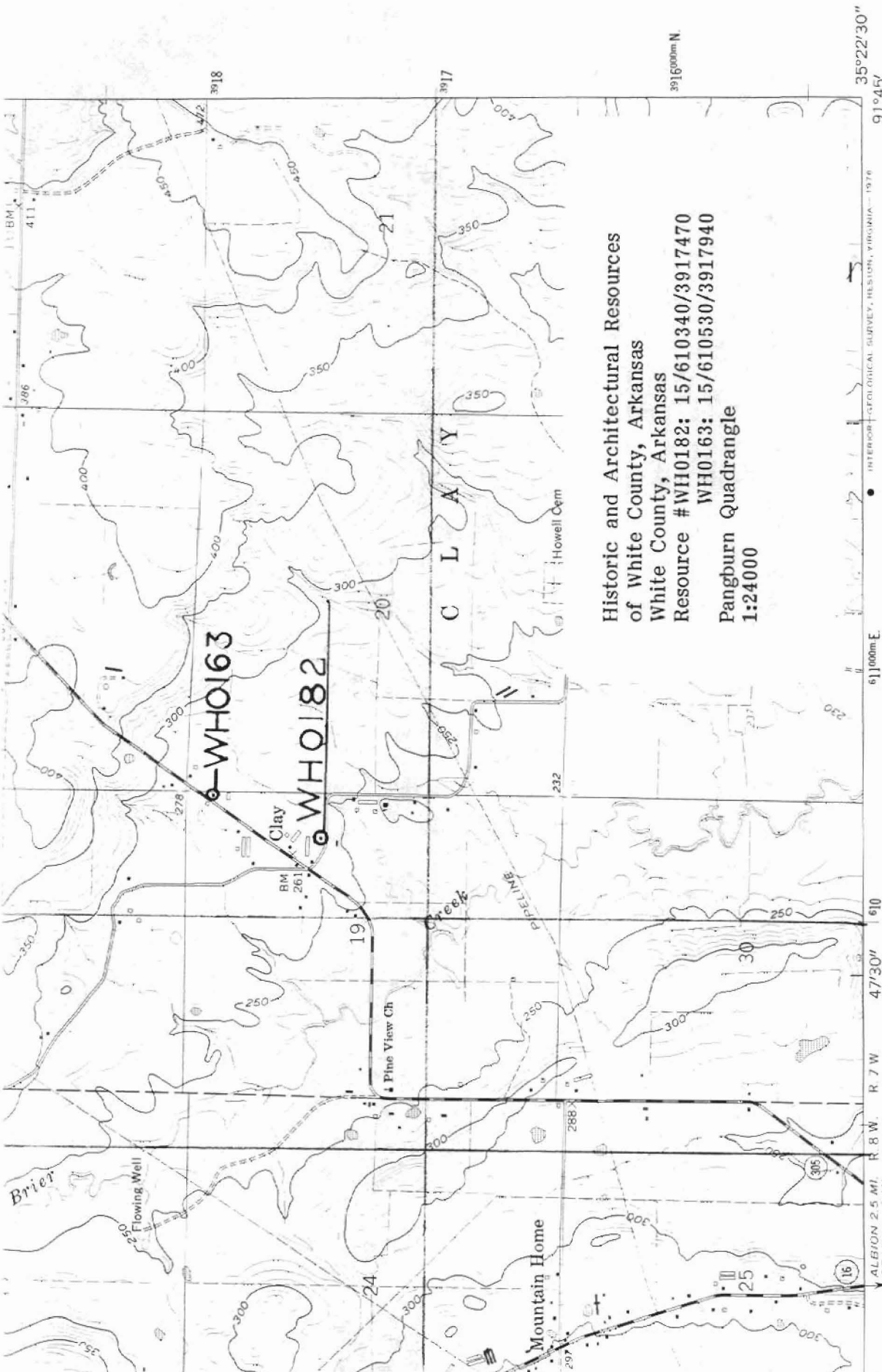
Beginning at a point formed by the intersection of a line running parallel with the storm cellar's southern elevation and located 25 feet to the south thereof with a perpendicular line running parallel to the eastern elevation of the storm cellar and located 25 feet to the east thereof, proceed northerly along the latter line for a distance of approximately 100 feet to a point formed by its intersection with a perpendicular line running parallel to the storm cellar's northern elevation; thence proceed westerly along said line for a distance of approximately 100 feet to a point formed by its intersection with a perpendicular line running parallel to the storm cellar's western elevation; thence proceed southerly for a distance of approximately 100 feet along said line to a point formed by its intersection with a perpendicular line running parallel with the storm cellar's southern elevation; thence proceed easterly for a distance of approximately 100 feet along said line to the point of beginning.

Boundary Justification:

This resource was constructed as part of a larger farmstead that has lost its integrity as such; thus, this boundary includes all the property known to be historically associated with this resource.







Historic and Architectural Resources
of White County, Arkansas
White County, Arkansas
Resource #WH0182: 15/610340/3917470
WH0163: 15/610530/3917940
Pangburn Quadrangle
1:24000

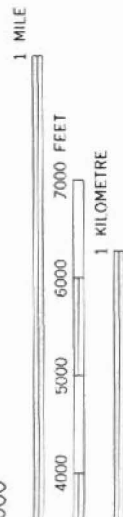
(JUDSON/A)
7654 1 SW

ROAD CLASSIFICATION

Medium-duty	Light-duty
Unimproved dirt	State Route



PANGBURN, ARK.
N3522.5—W9145/7.5



AL 10 FEET
AL DATUM OF 1929

MAP ACCURACY STANDARDS
COLORADO 80225, OR RESTON, VIRGINIA 22092
N. LITTLE ROCK, ARKANSAS 72204