

NR listed 4/6/90

United States Department of the Interior
National Park Service

National Register of Historic Places Registration Form

This form is for use in nominating or requesting determinations of eligibility for individual properties or districts. See instructions in *Guidelines for Completing National Register Forms* (National Register Bulletin 16). Complete each item by marking "x" in the appropriate box or by entering the requested information. If an item does not apply to the property being documented, enter "N/A" for "not applicable." For functions, styles, materials, and areas of significance, enter only the categories and subcategories listed in the instructions. For additional space use continuation sheets (Form 10-900a). Type all entries.

1. Name of Property

historic name Little Cossatot River Bridge

other names/site number HAER No. AR-35

2. Location

street & number County Road #139H, spanning the Little Cossatot River not for publication N/A

city, town Lockesburg vicinity

state Arkansas code 05 county Sevier code 133 zip code 71846

3. Classification

Ownership of Property

- private
 public-local
 public-State
 public-Federal

Category of Property

- building(s)
 district
 site
 structure
 object

Number of Resources within Property

Contributing	Noncontributing
_____	_____ buildings
_____	_____ sites
<u>1</u>	_____ structures
_____	_____ objects
<u>1</u>	_____ Total

Name of related multiple property listing:

Historic Bridges of Arkansas

Number of contributing resources previously

listed in the National Register N/A

4. State/Federal Agency Certification

As the designated authority under the National Historic Preservation Act of 1966, as amended, I hereby certify that this nomination request for determination of eligibility meets the documentation standards for registering properties in the National Register of Historic Places and meets the procedural and professional requirements set forth in 36 CFR Part 60. In my opinion, the property meets does not meet the National Register criteria. See continuation sheet.

Signature of certifying official

Arkansas Historic Preservation Program

State or Federal agency and bureau

Date

In my opinion, the property meets does not meet the National Register criteria. See continuation sheet.

Signature of commenting or other official

State or Federal agency and bureau

Date

5. National Park Service Certification

I, hereby, certify that this property is:

- entered in the National Register.
 See continuation sheet.
 determined eligible for the National Register. See continuation sheet.
 determined not eligible for the National Register.
 removed from the National Register.
 other, (explain:)

Signature of the Keeper

Date of Action

6. Function or Use

Historic Functions (enter categories from instructions)

Transportation/Road-Related

Current Functions (enter categories from instructions)

Transportation/Road-Related

7. Description

Architectural Classification

(enter categories from instructions)

Other: Warren pony-truss

Materials (enter categories from instructions)

foundation steel/concrete

walls steel

roof

other

Describe present and historic physical appearance.

**United States Department of the Interior
National Park Service**

**National Register of Historic Places
Continuation Sheet**

Section number 7 Page 1

The Little Cossatot River Bridge is a 70 foot long, steel, Warren pony-truss bridge. Two timber stringer approach spans measure 17 feet each and give the bridge a total length of 104 feet. The top chord of the Warren truss is a solid I-beam connected to the bottom chord by riveted plates. This connection rests directly on top of a cylindrical steel ring pier filled with concrete. Bearing blocks are not used. The bottom chord is the only built-up member in the truss and contains angles bolted together with batten plates. The diagonal and verticals are channels. I-beam floor girders at each vertical support timber stringers under the wood planked road deck. Channel outriggers extend out from the end of the floor girders at the first vertical on each end of the bridge.

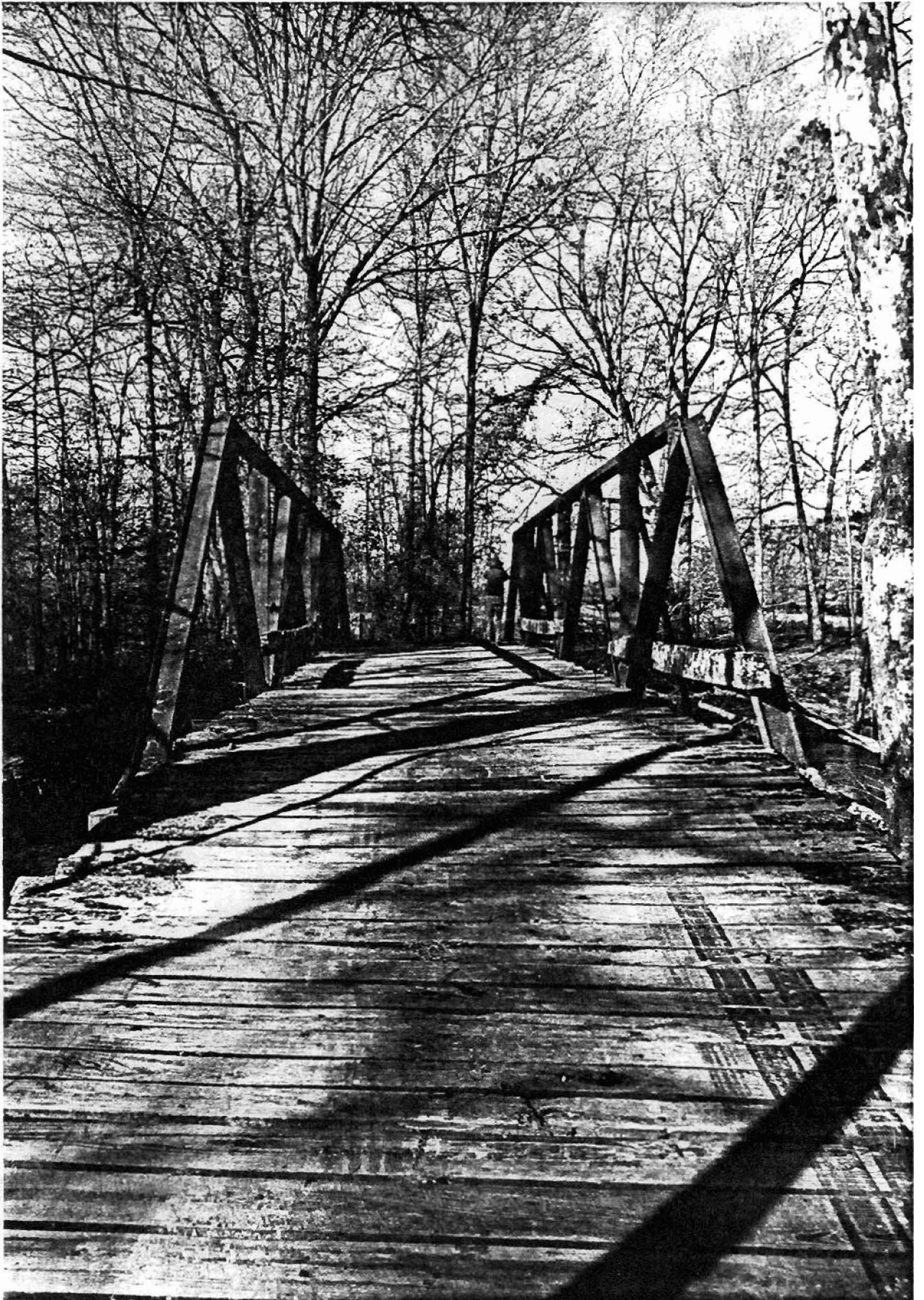
This bridge is in fair condition and is being maintained by the county.

**United States Department of the Interior
National Park Service**

National Register of Historic Places Continuation Sheet

Section number 8 Page 1

The Little Cossatot River Bridge is a unique Arkansas example of a steel, Warren pony-truss bridge with verticals. Designed by the relatively obscure Morava Construction Company of Chicago, Illinois, in 1908, this bridge exhibits unique design features not seen in other bridges of its type in the state. These features include a solid I-beam top chord and angle outriggers. Built during the Early Transportation Era: 1803-1922, it is an early example of a bolt connected (rather than rivet connected) bridge. It survives as the only documented Morava Construction Company bridge in Arkansas and is a significant example of early 20th-century bridge construction, reflecting a time when county officials relied heavily upon competing bridge companies to supply a relatively inexpensive and reliable product not manufactured in the state. As such, it is nominated under Criteria A and C with statewide significance.

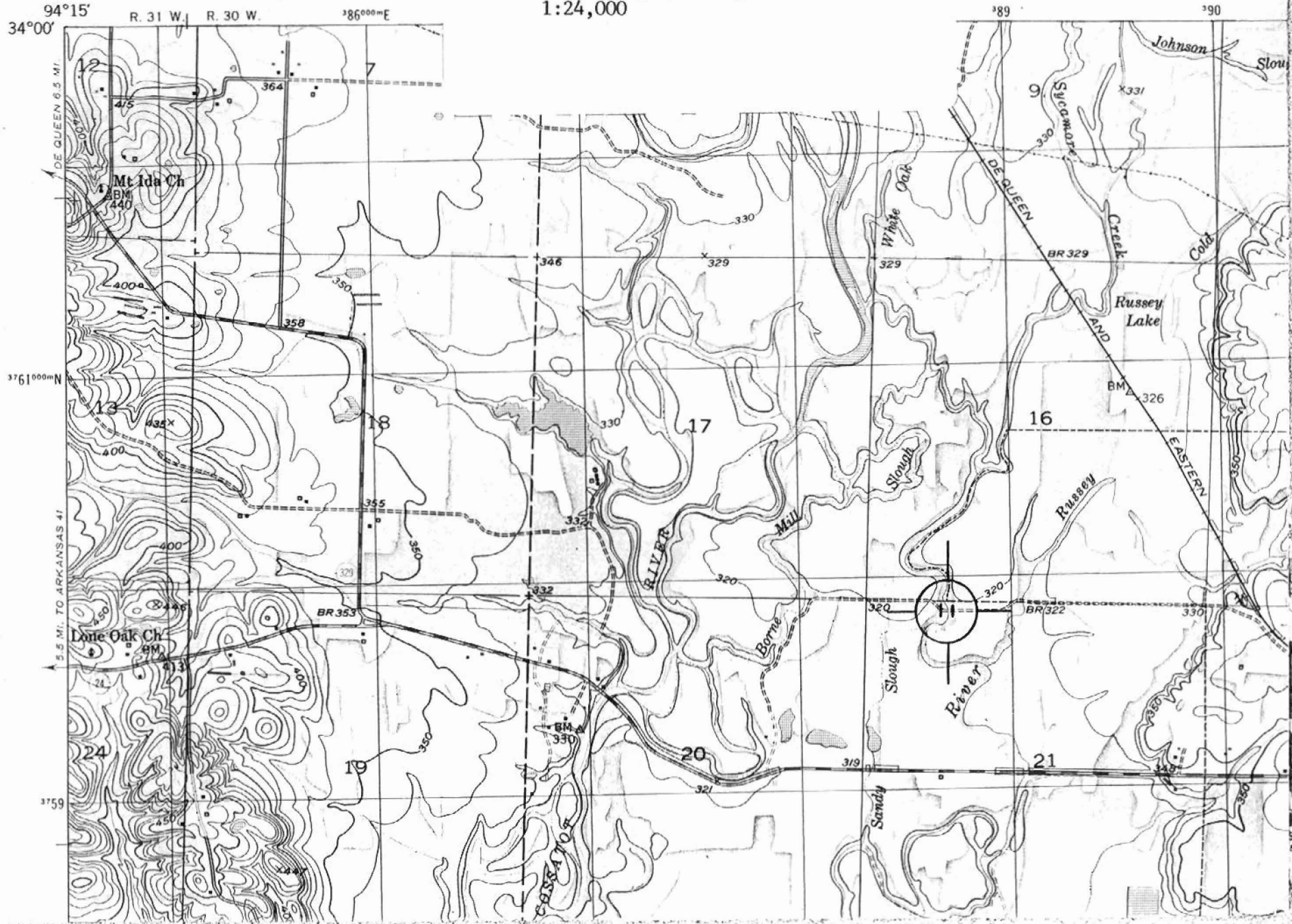




2 11 55
E. QUEEN

UNITED STATES
DEPARTMENT OF THE INTERIOR
GEOLOGICAL SURVEY

Jossatot River Bridge
Lockesburg Vic., Arkansas
Sevier County
A) 15/388685/3759825
Lockesburg Quadrangle
1:24,000



8. Statement of Significance

Certifying official has considered the significance of this property in relation to other properties:

nationally statewide locally

Applicable National Register Criteria A B C D

Criteria Considerations (Exceptions) A B C D E F G

Areas of Significance (enter categories from instructions)

Transportation

Engineering

Period of Significance

1908-1922

Significant Dates

1908

Cultural Affiliation

N/A

Significant Person

N/A

Architect/Builder

Builder: Morava Construction Company

State significance of property, and justify criteria, criteria considerations, and areas and periods of significance noted above.

9. Major Bibliographical References

See Historic Bridges of Arkansas, Multiple Property Nomination, Section H.

Previous documentation on file (NPS):

- preliminary determination of individual listing (36 CFR 67) has been requested
- previously listed in the National Register
- previously determined eligible by the National Register
- designated a National Historic Landmark
- recorded by Historic American Buildings Survey # _____
- recorded by Historic American Engineering Record # HAER No. AR-35

See continuation sheet

Primary location of additional data:

- State historic preservation office
- Other State agency
- Federal agency
- Local government
- University
- Other

Specify repository:

U.S. Library of Congress

10. Geographical Data

Acreeage of property Less than one acre

UTM References

A 15 388685 3759825
 Zone Easting Northing

C _____

B _____
 Zone Easting Northing

D _____

See continuation sheet

Verbal Boundary Description

Beginning at a point approximately 4,050 feet east of the Lockesburg City limit boundary on County Road # 139H, the boundary of the Little Cossatot River Bridge starts here at the east abutment, where it continues west across the Little Cossatot River for approximately 104 feet where it terminates at the west abutment.

See continuation sheet

Boundary Justification

The boundary includes the main span, approach spans, piers and abutments that are historically associated with this property.

See continuation sheet

11. Form Prepared By

name/title Michael Swanda, Survey Coordinator
 organization Arkansas Historic Preservation Program date February 5, 1990
 street & number 225 East Markham Street telephone (501) 371-2763
 city or town Little Rock state Arkansas zip code 72201