

United States Department of the Interior
National Park Service

RECEIVED
AUG 8 1990

National Register of Historic Places Registration Form

NATIONAL
REGISTER

This form is for use in nominating or requesting determinations of eligibility for individual properties or districts. See instructions in *Guidelines for Completing National Register Forms* (National Register Bulletin 16). Complete each item by marking "x" in the appropriate box or by entering the requested information. If an item does not apply to the property being documented, enter "N/A" for "not applicable." For functions, styles, materials, and areas of significance, enter only the categories and subcategories listed in the instructions. For additional space use continuation sheets (Form 10-900a). Type all entries.

1. Name of Property

historic name W. P. Fletcher House

other names/site number _____

2. Location

street & number 604 W. Fourth Str.

☐ not for publication N/A

city, town Lonoke

☐ vicinity N/A

state Arkansas code AR county Lonoke

code AR 085 zip code 72086

3. Classification

Ownership of Property

- ☒ private
☐ public-local
☐ public-State
☐ public-Federal

Category of Property

- ☒ building(s)
☐ district
☐ site
☐ structure
☐ object

Number of Resources within Property

Contributing

1

1

2

Noncontributing

buildings

sites

structures

objects

Total

Name of related multiple property listing:

N/A

Number of contributing resources previously

listed in the National Register N/A

4. State/Federal Agency Certification

As the designated authority under the National Historic Preservation Act of 1966, as amended, I hereby certify that this ☒ nomination ☐ request for determination of eligibility meets the documentation standards for registering properties in the National Register of Historic Places and meets the procedural and professional requirements set forth in 36 CFR Part 60. In my opinion, the property ☒ meets ☐ does not meet the National Register criteria. ☐ See continuation sheet.

Signature of certifying official

Date

Arkansas Historic Preservation Program

State or Federal agency and bureau

In my opinion, the property ☐ meets ☐ does not meet the National Register criteria. ☐ See continuation sheet.

Signature of commenting or other official

Date

State or Federal agency and bureau

5. National Park Service Certification

I, hereby, certify that this property is:

- ☒ entered in the National Register.
☐ See continuation sheet.
☐ determined eligible for the National Register. ☐ See continuation sheet.
☐ determined not eligible for the National Register.
☐ removed from the National Register.
☐ other, (explain:) _____

Entered in the
National Register

9/5/90

Signature of the Keeper

Date of Action

FLETCHER HOUSE

6. Function or Use

Historic Functions (enter categories from instructions)

DOMESTIC/Single Dwelling
DOMESTIC/Secondary Structure

Current Functions (enter categories from instructions)

DOMESTIC/Single Dwelling
DOMESTIC/Secondary Structure

7. Description

Architectural Classification

(enter categories from instructions)

Colonial Revival

Materials (enter categories from instructions)

foundation Brick piers
walls Weatherboard

roof Asphalt shingle
other _____

Describe present and historic physical appearance.

NR listed 9/05/90

☒ See continuation sheet

8. Statement of Significance

Certifying official has considered the significance of this property in relation to other properties:

☐ nationally ☐ statewide ☒ locally

Applicable National Register Criteria ☐ A ☒ B ☒ C ☐ D

Criteria Considerations (Exceptions) ☐ A ☐ B ☐ C ☐ D ☐ E ☐ F ☐ G

Areas of Significance (enter categories from instructions)

ARCHITECTURE

AGRICULTURE

Significant Person

Fletcher, W. P.

Period of Significance

c. 1903

1903 - 1940

Significant Dates

N/A

N/A

Cultural Affiliation

N/A

Architect/Builder

unknown

State significance of property, and justify criteria, criteria considerations, and areas and periods of significance noted above.

☒ See continuation sheet

9. Major Bibliographical References

Previous documentation on file (NPS):

- ☐ preliminary determination of individual listing (36 CFR 67) has been requested
- ☐ previously listed in the National Register
- ☐ previously determined eligible by the National Register
- ☐ designated a National Historic Landmark
- ☐ recorded by Historic American Buildings Survey # _____
- ☐ recorded by Historic American Engineering Record # _____

☒ See continuation sheet

Primary location of additional data:

- ☐ State historic preservation office
- ☐ Other State agency
- ☐ Federal agency
- ☐ Local government
- ☐ University
- ☐ Other

Specify repository: _____

10. Geographical Data

Acres of property less than one acre

UTM References

A 15 600150 3849800
Zone Easting Northing

C _____

B _____
Zone Easting Northing

D _____

☐ See continuation sheet

Verbal Boundary Description

Lots 1, 2, 9 and 10, Block 15, Dismukes Addition to the Town of Lonoke, Arkansas.

☐ See continuation sheet

Boundary Justification

This boundary includes all the property historically associated with this resource which retains its integrity.

☐ See continuation sheet

11. Form Prepared By

name/title Angela K. Albright, National Register Assistant

organization Arkansas Historic Preservation Program date July 17, 1990

street & number 225 E. Markham, Suite 300 telephone (501) 371-2763

city or town Little Rock state AR zip code 72201

United States Department of the Interior
National Park ServiceNational Register of Historic Places
Continuation SheetSection number 7 Page 1

Summary

The W. P. Fletcher House is a two and one-half story private residence built primarily in the Colonial Revival style with some residual Queen Anne detailing. It features an essentially double-pile, "L"-shaped plan with a central hall.

Elaboration

The W. P. Fletcher House is a two and one-half story, double-pile house featuring a central hall and an L-shaped plan. The house is of frame construction with a foundation of brick piers. One of the two interior brick chimneys is positioned centrally in the southern four-square portion of the house. The second chimney is located centrally in the northern rear ell projection. This second chimney is part of the original house which was built c. 1880. The 1880 portion of the house was probably a tenant farmer's home originally.

A rear T projection protrudes from the front, four-square portion of the house, and another L projection juts out from the end of the T portion on the back (the northern elevation) of the house. The rear L projection is the original house to which the 1903 house was added.

A hipped roof houses the front, four-square portion of the house and the rear projections both have gable roofs. Dormers ornament the roof on the southern, eastern, and western elevations. The entire roof is covered with composition shingle.

The three porches nearly encompass the house. The front, wrap-around porch stretches across the southern facade and part of the eastern facade. The floor, as well as the steps leading up to it, are concrete. A shed roof over the porch is supported by round columns and ornamented with pediment details over the entries. Triangular and fish-scale wood shingles adorn the pediment and the roof dormers. The second porch wraps around part of the eastern and northern elevations and has a second story on the eastern portion. The second story portion is detailed with lattice work. The shed roof is supported by wooden posts and covers a wooden floor. The third porch extends the entire length of the T projection on the western elevation. Like the others, this porch has a shed roof. The roof covers a wooden floor and is supported by wooden posts.

The entire house is fenestrated by single-hung and double-hung windows. Except for two, all of the windows on the newer portion of the house are double-hung and have a one-over-one pane arrangement. The two windows on the first story of the southern facade are large, single-hung windows with stained glass in the upper field. The windows on the older portion of the house are all double-hung with pane arrangements of two-over-two, four-over-four, and six-over-six.

Concrete sidewalks encompass the front, square portion of the house and sidewalks on the southern, eastern, and northern elevations extend from the doors to the respective streets; however, the sidewalk on the northern elevation does not actually lead to a street. According to historic city maps, 5th Street was going to pass the northern elevation of the W. P. Fletcher Home. For some unknown reason, the street was never finished, hence the sidewalk leads to a dirt path behind the house. Two other sidewalks branch off of this one; one leads to an area that was once probably an outbuilding, and the other leads to a c. 1910 small, molded concrete block outbuilding just northeast of the house. At the end of the sidewalk on the eastern elevation, just a few feet from the street, is a stone carriage stop on which the name Fletcher can still be read.

The interior of the house features seven fireplaces, one in the original part of the house and six in the 1903 portion. The oldest fireplace is found in what is now the kitchen. It is brick and was probably used for cooking. The evidence for this is that there were black carbon marks going up into the chimney before it was painted, the

**United States Department of the Interior
National Park Service**

**National Register of Historic Places
Continuation Sheet**

Section number 7 Page 2

back slopes as if to push heat to hanging kettles, etc., and a sandpit was found under the fireplace under the house. The other six fireplaces all feature a beveled mirror above the fireplace with shelves above and below each mirror. The mirrors are both oval and square in shape with some carved wood detailing.

The interior doors are extremely tall and very narrow, most of them having seven recessed, horizontal panels. The main entrance on the southern facade is encircled by sidelights, as are the entrances on the eastern and northern facades. The staircase and banister are particularly noteworthy. The corner post of the banister and the balustrade are highlighted with detailed carving and wood panels on the bottom rail.

The attic is completely finished and could conceivably be used for two or more rooms. On one of the chimneys the names "G. F.," and "Geo. B. Fletcher," (one of W. P.'s sons) have been written along with the date, October 29, 1904.

United States Department of the Interior
National Park ServiceNational Register of Historic Places
Continuation SheetSection number 8 Page 1

Summary

The W. P. Fletcher House, constructed in 1903-4 as a two and one-half story Colonial Revival addition to a c. 1880 vernacular house type, survives in its original location as the only house of its type in the area. Also, W. P. Fletcher was a wealthy, prominent, and important man in his time and in Lonoke County. As such, it is being nominated under Criterion C with local significance.

Elaboration

Historically, the Fletcher family have been early settlers in a number of states. It has been documented that they were in Virginia in 1775, in Georgia and Alabama, in Tennessee as some of the earliest settlers in their locality, in Mississippi for a short time, and finally Arkansas in 1868. W. P. Fletcher and his brother John D. came to Arkansas in 1868, apparently on the run from Union forces in Yazoo County, Mississippi, their birthplace. They had passes, signed by an unknown Union major, through the Union Army. They were considered war criminals because they had manufactured munitions on the site of what is now Birmingham, Alabama. One account even states that the brothers had some trouble with Northern carpetbaggers.

William P. Fletcher served his community and state in numerous capacities. He was asked to teach the first school in Lonoke, for which he served a term of four months each in 1868 and 1869. The Lonoke Public High School was established in 1879. W. P. made this possible by mortgaging his home to secure the funds necessary to start the school. He was president of the school board, and a diploma issued to W. P. Fletcher, Jr., his son, that was signed by W. P. Fletcher, Sr. was found in the Fletcher home. Although he had strong ties to education, he was also a successful businessman. He was president of the Bank of Central Arkansas, one of the banks that served Lonoke. As one of the earliest businessmen in Lonoke, he had a business called "Lands - Insurance - Abstracts - A Specialty - W. P. Fletcher and Son." (W. P. Fletcher, Jr. joined the firm in 1898.) In 1868 W. P. was elected sheriff and served in this capacity until 1878. He resigned from the sheriff's position in 1868 because he had been elected to the State Senate from the 12th district; he served as a senator for a term of four years. W. P. also served his community as a member and Post Master of Lonoke Lodge A. F. and A. M., (for which he was responsible in establishing), First Chancellor Commander of the Knights of Honor, and church deacon. In 1910 the Bayou Meto Missionary Baptist Church purchased an acre of land for a building from W. P. Fletcher for the sum of one dollar.

Even considering his numerous accomplishments and generosity, he is probably most noteworthy as a pioneer of the rice industry in Lonoke County. He allowed the government to use 160 acres of land for seven years for experimental purposes. W. P. personally spent over \$2,500.00 for the development and establishment of a rice industry. Until 1904, when William H. Fuller of Lonoke produced the first successful rice crop, the economies of Lonoke and Prairie Counties depended primarily on the fluctuation of the cotton market, hence the economies were frail at best. Since Fuller's first successful crop, rice has been a mainstay of the agricultural industry in Arkansas, due largely in part to the foresightedness and generosity of W. P. Fletcher.

The W. P. Fletcher House is noteworthy for its design and as the only one of its kind in the area. W. P. Fletcher himself is significant as a pioneer in the rice industry and as a businessman with concern for the welfare of his community and state.

United States Department of the Interior
National Park Service

National Register of Historic Places
Continuation Sheet

Section number 9 Page 1

Bibliography

The Goodspeed Biographical and Historical Memoirs of Central Arkansas, Chicago: Goodspeed Publishing Company, 1889.

Miscellaneous historical information on W. P. Fletcher. Personal collection of Wes and Linda Fultz, Lonoke, Arkansas.

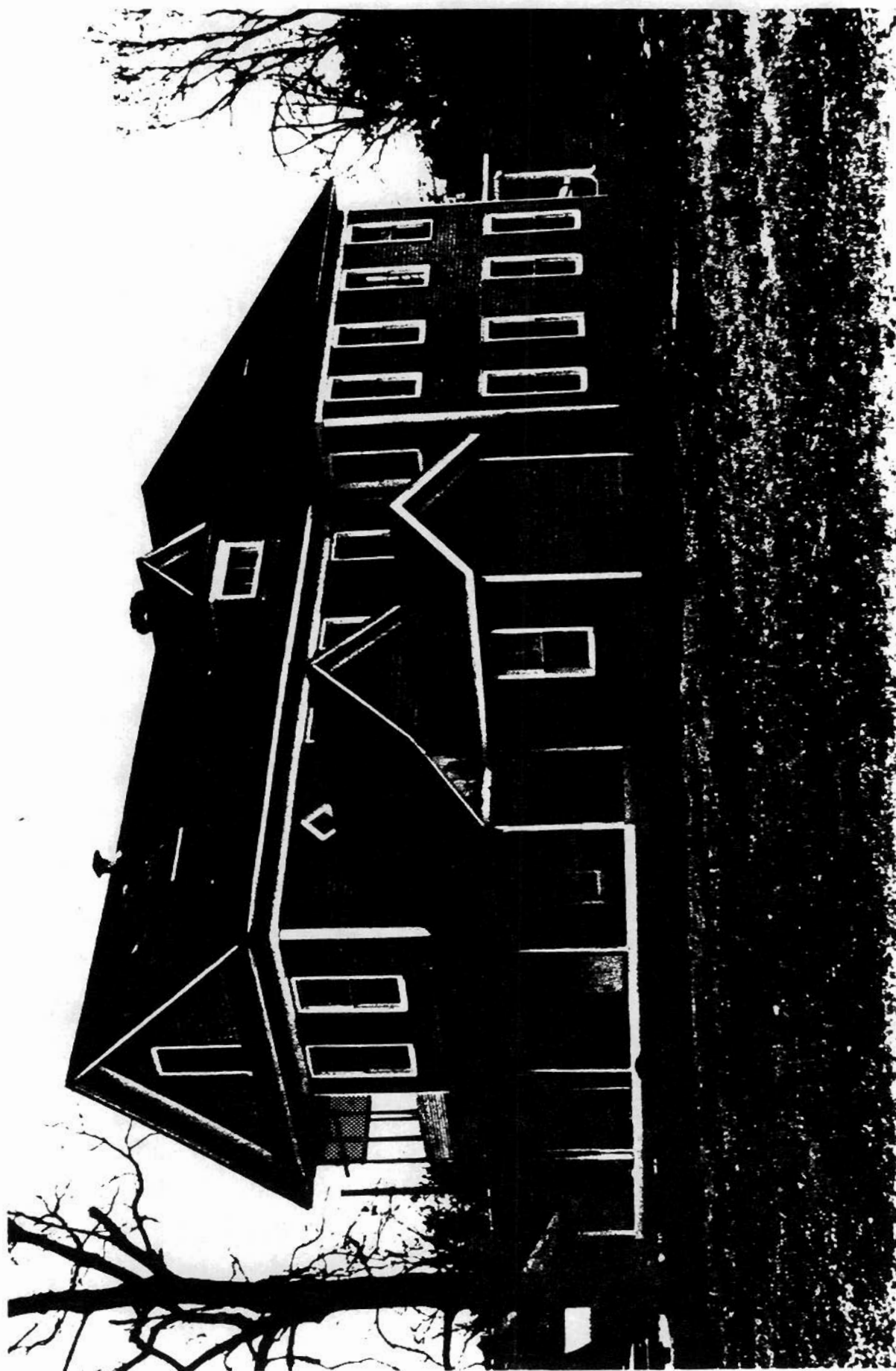
Interview with Martha Anne Fletcher Bennett, granddaughter of W. P. Fletcher.

1873-1973 Lonoke County Centennial.

"Raising Rice in Arkansas," *The Southwest Trail* (published by the Rock Island Railroad), July, 1915.







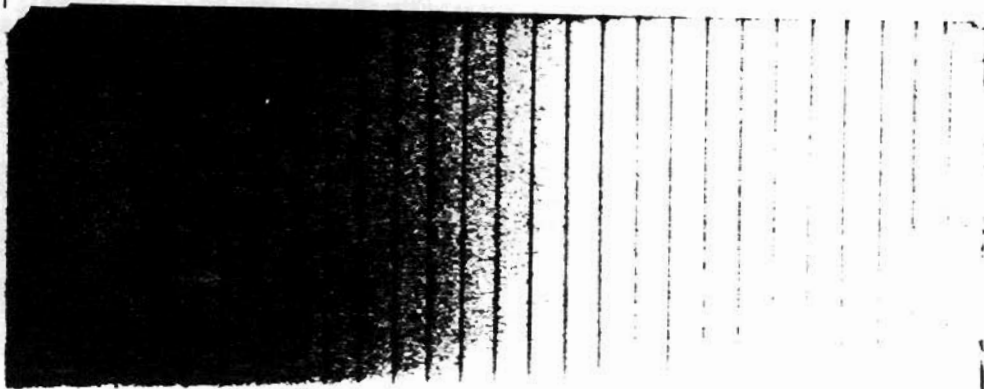
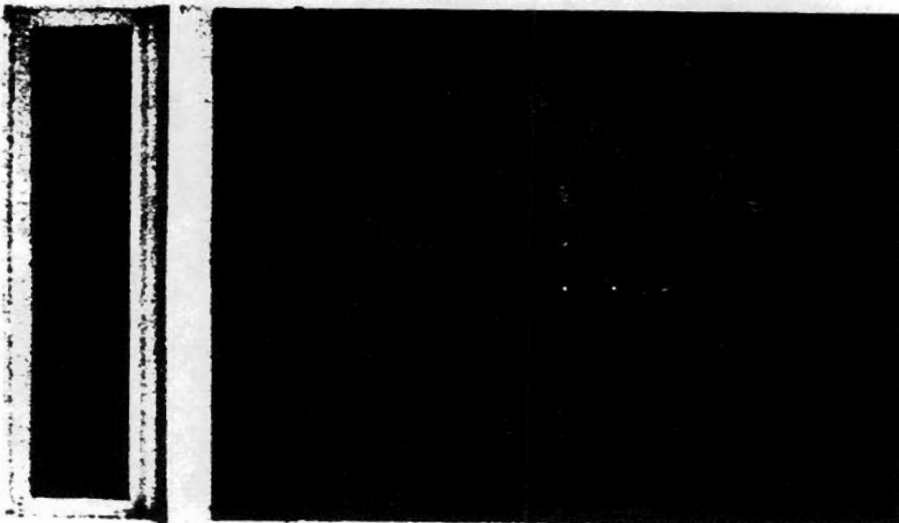
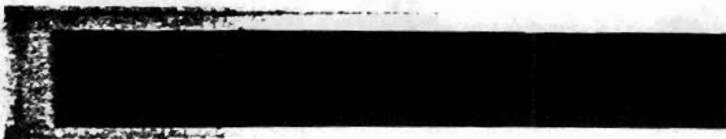
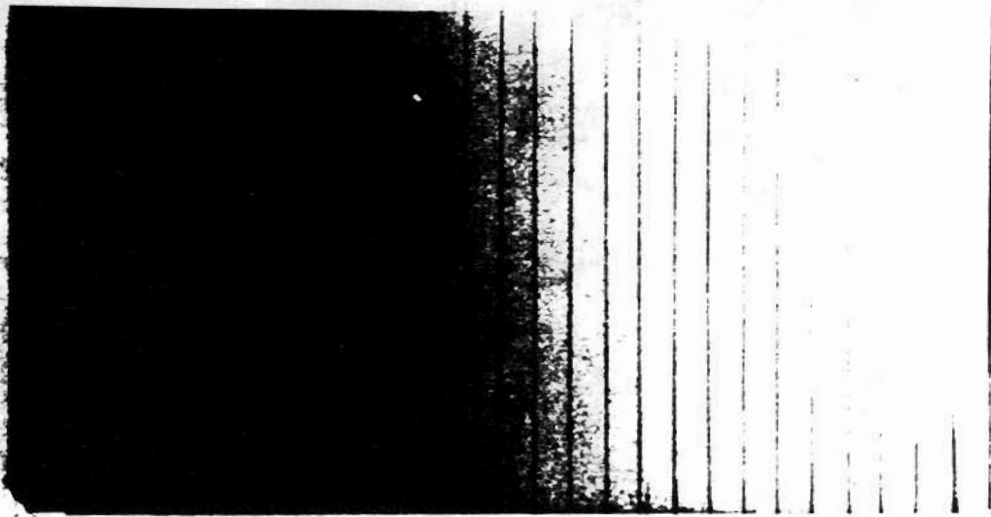




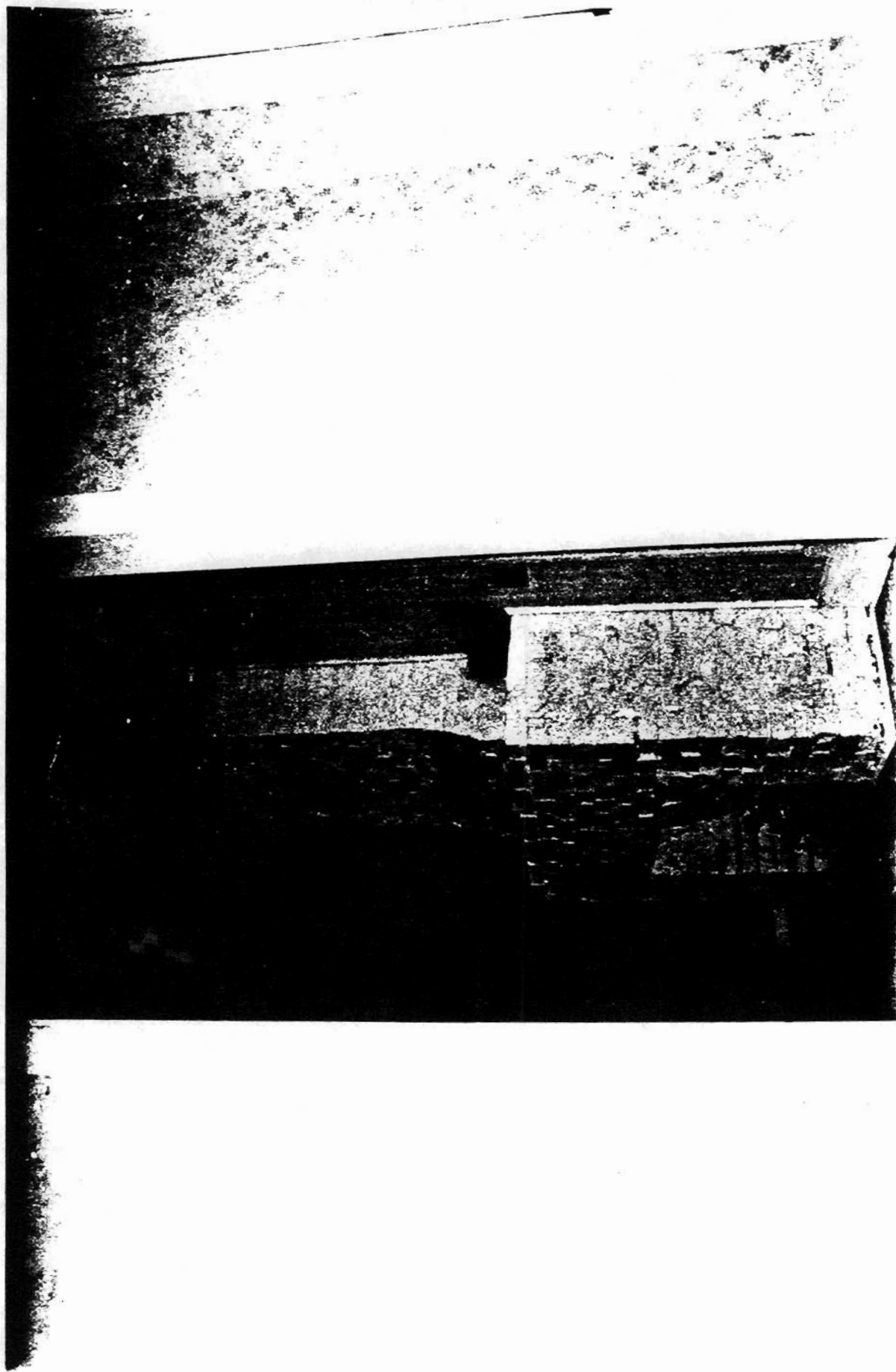


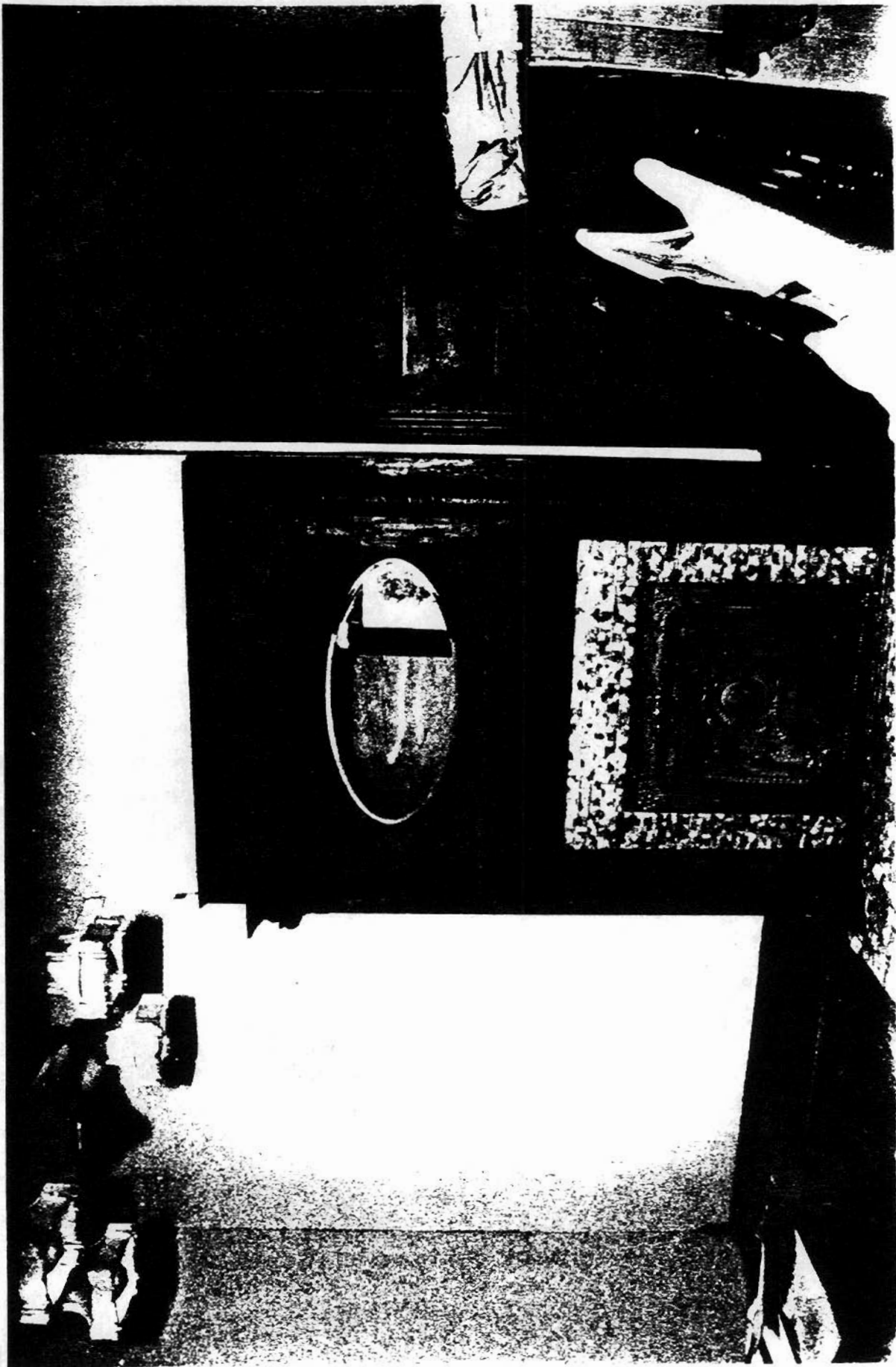














Lonoke, Arkansas
Lonoke County
15/600150/3849800
Lonoke Quadrangle
1:24000

