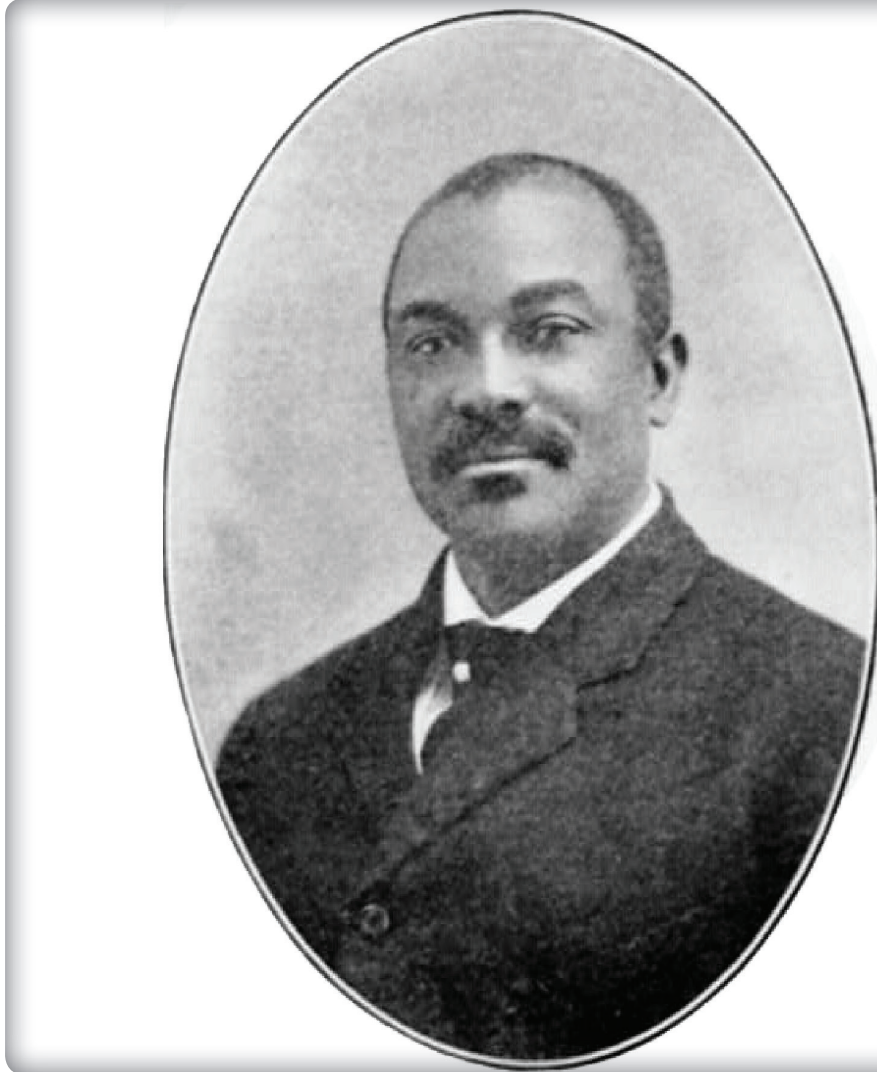


ARKANSAS BLACK HISTORY



Courtesy of the Arkansas State Archives

The Rev. Joseph A. Booker (1859–1926) was born enslaved on the Bayou Bartholomew plantation in Ashley County. He started his adult life as a teacher on a nearby plantation and was ordained in the Baptist Church. He attended college in Pine Bluff at Arkansas Agricultural, Mechanical & Normal College (AM&N). In 1887, he was chosen to serve as the first president of Arkansas Baptist College in Little Rock. He was active in the fight for African American civil rights, opposing the separate coach law of 1891, and was appointed to serve on the Arkansas Commission on Race Relations after the Elaine Race Massacre in 1919. To learn more about Joseph A. Booker or to find more examples of black excellence, visit the Mosaic Templars Cultural Center.



ARKANSAS
HERITAGE