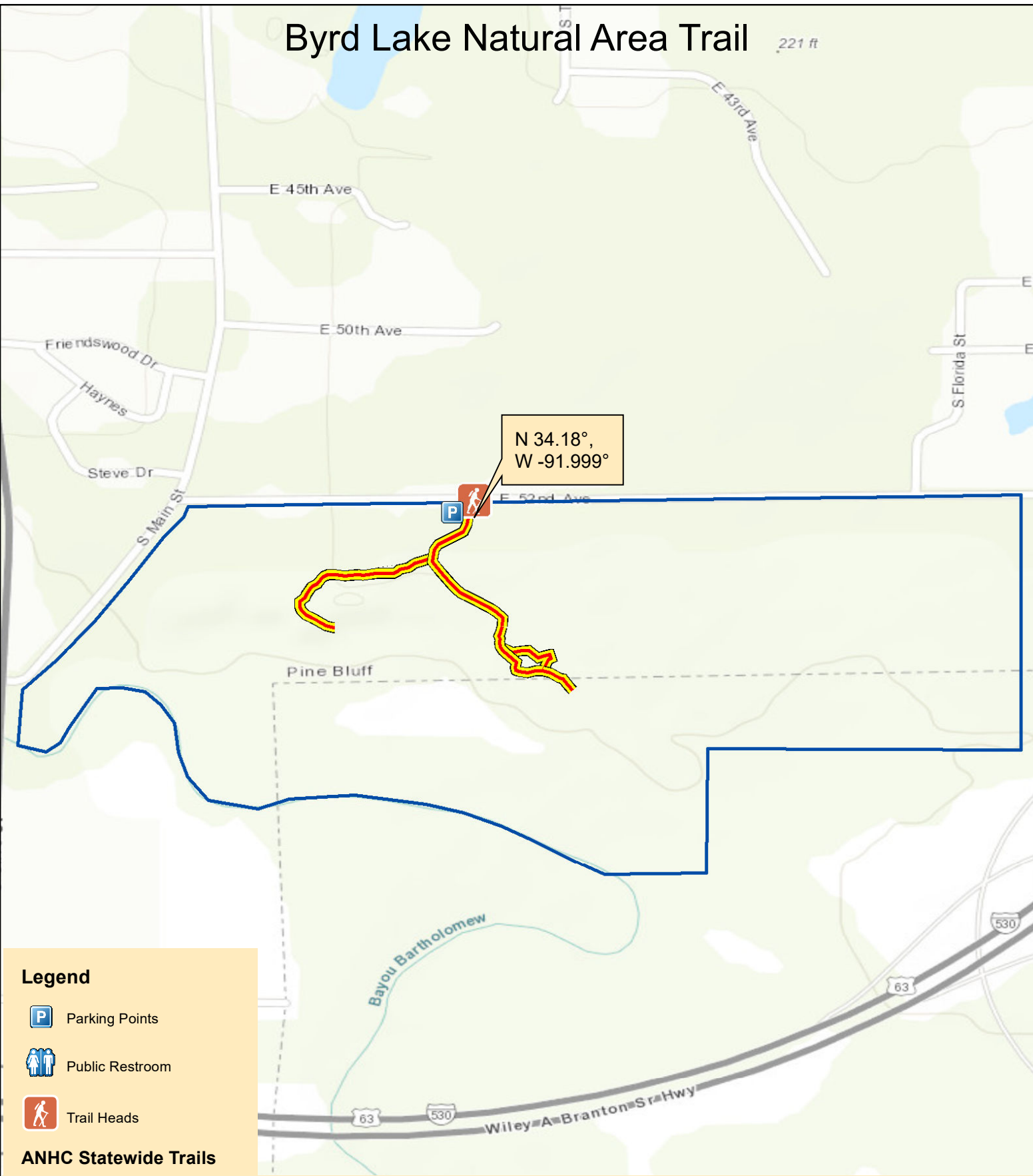


# Byrd Lake Natural Area Trail

221 ft



N 34.18°,  
W -91.999°

## Legend

- Parking Points
- Public Restroom
- Trail Heads

## ANHC Statewide Trails

### Accessibility

- ADA Compliant
- By Boat
- By Foot
- Part of Trail ADA Compliant
- Natural Area

Trail rated: Easy

Disclaimer: This map is for general reference purposes only and is not a legal document. User assumes all risks.



Trail Length: 0.5 miles

