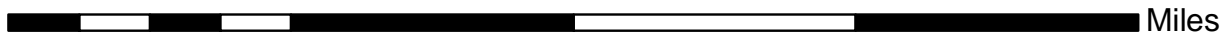
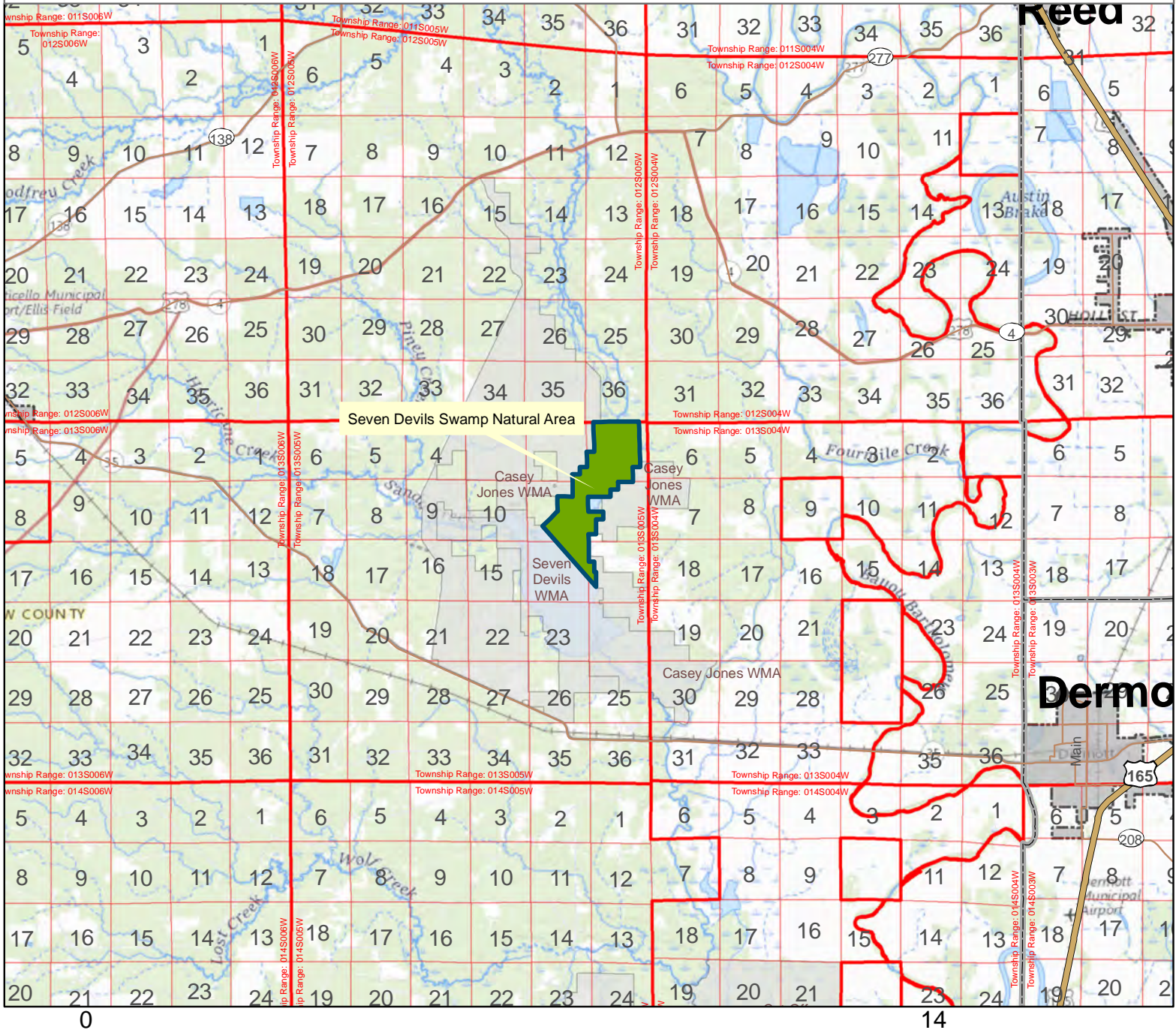


Seven Devils Swamp Natural Area



County: Drew

Date Added: 2002

Acres: 1076.26

Directions: From Monticello, travel east on State Highway 35 approximately 14.0 miles to Collins. From the Cut-off Creek bridge in Collins, continue east approximately 0.1 mile, and turn left on Selma-Collins Road (County Road 69). Travel north 3.65 miles. Turn left on Barnard Road. Travel 1.5 miles to boat ramp.

