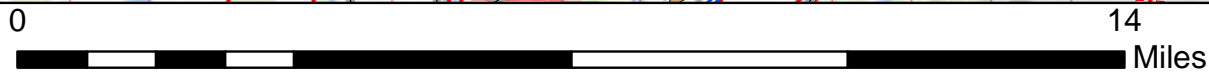
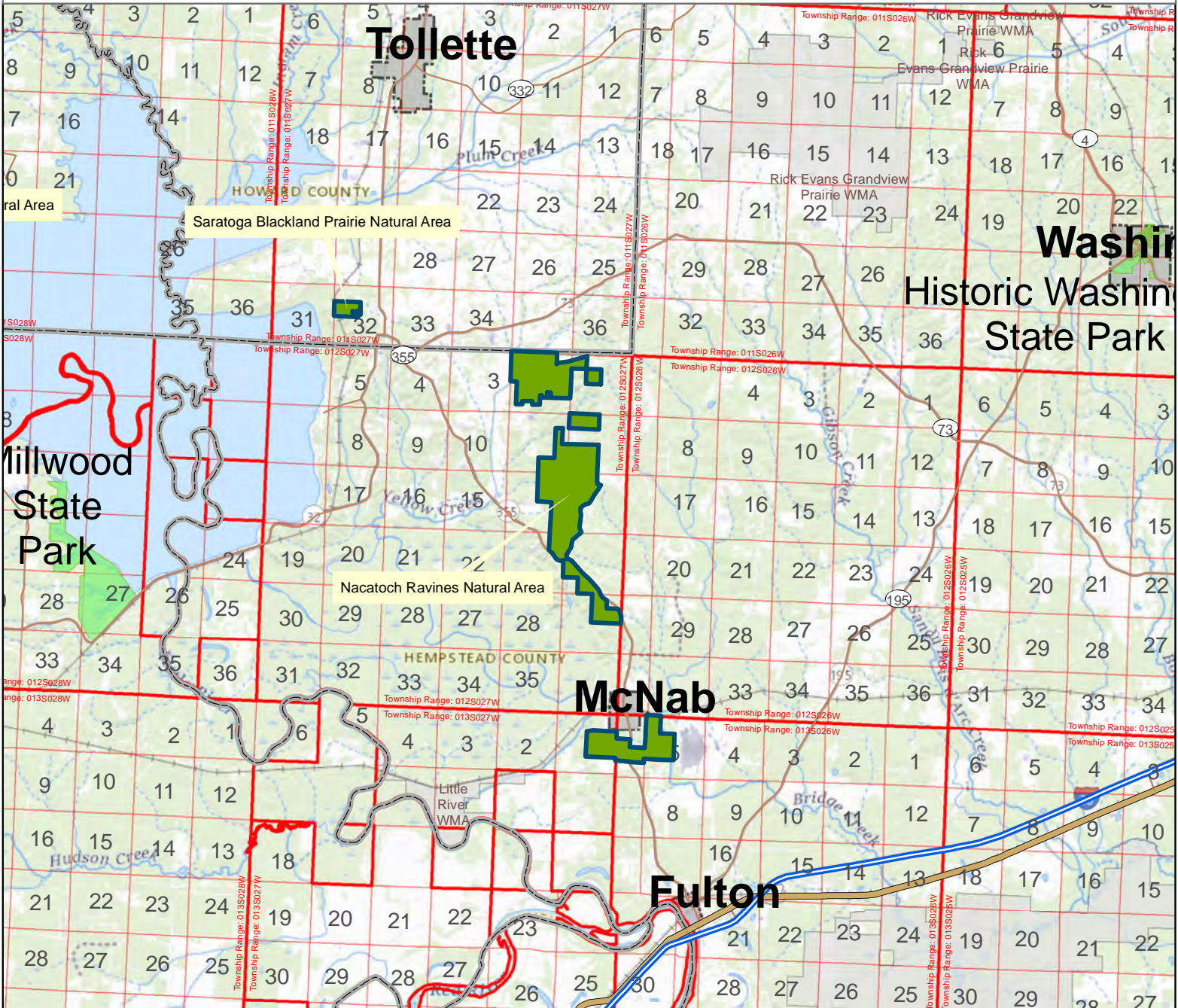




Nacatoch Ravines Natural Area



County: Hempstead

Date Added: 1989

Acres: 2122.125

Directions: From Interstate 30 take exit 18 at Fulton, travel west on U.S. Highway 67 for 1 mile to State Highway 355. Turn right and travel north approximately 3 miles to southern tract. Continue north on Highway 355 for approximately 2.5 miles to northern tract.

