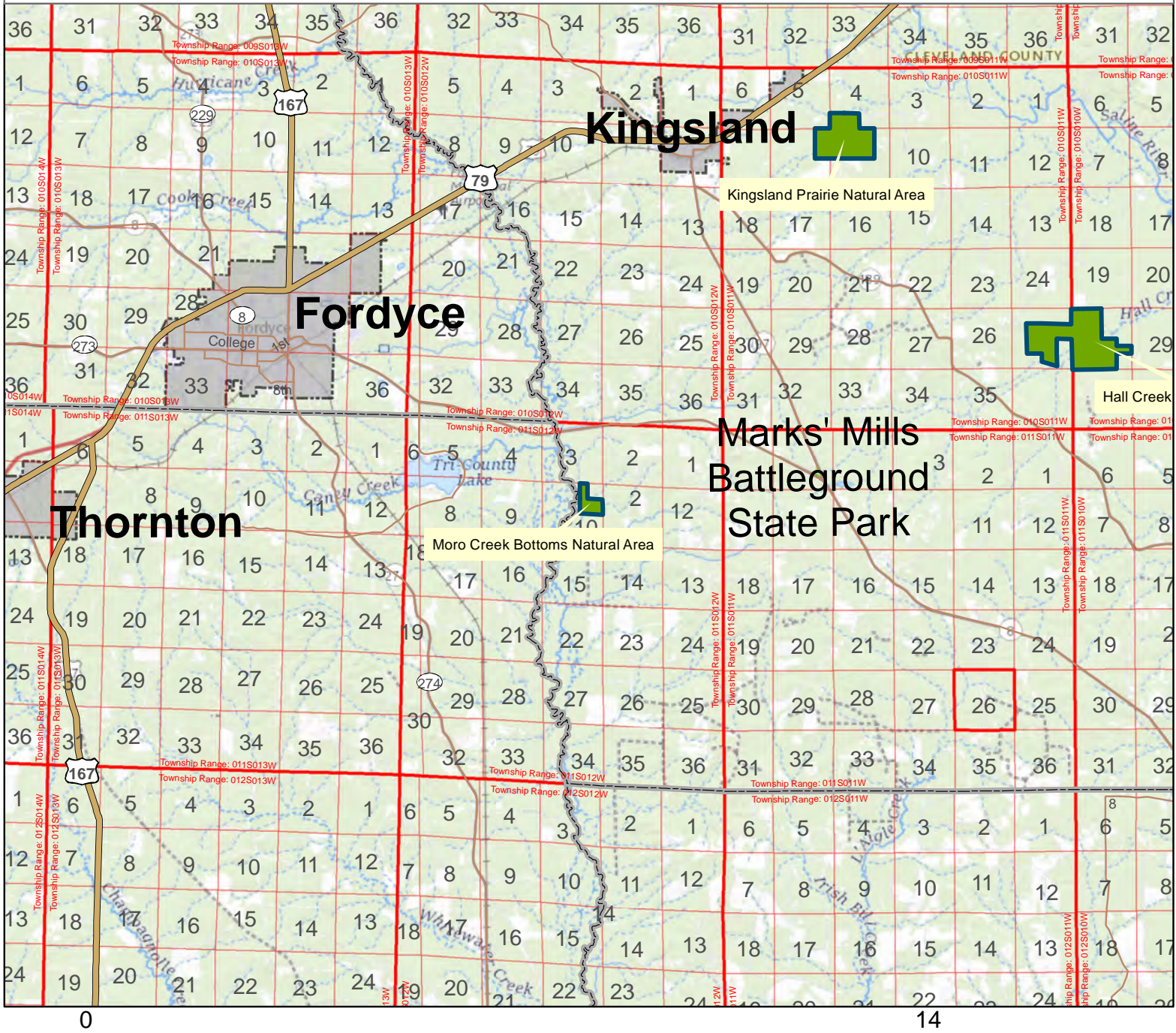


Moro Creek Bottoms Natural Area



County: Cleveland

Date Added: 1987

Acres: 81,113

Directions: From downtown Fordyce take State Highway 8 East. Go 5.7 miles and turn right (south), taking the first right fork at 1.0 mile. Continue about 0.4 mile on an unimproved woods road that joins from the right (west). Park and walk this woods road for about 1.0 mile. Caution: Public access may be restricted from time to time by a neighboring landowner's locked gate.

