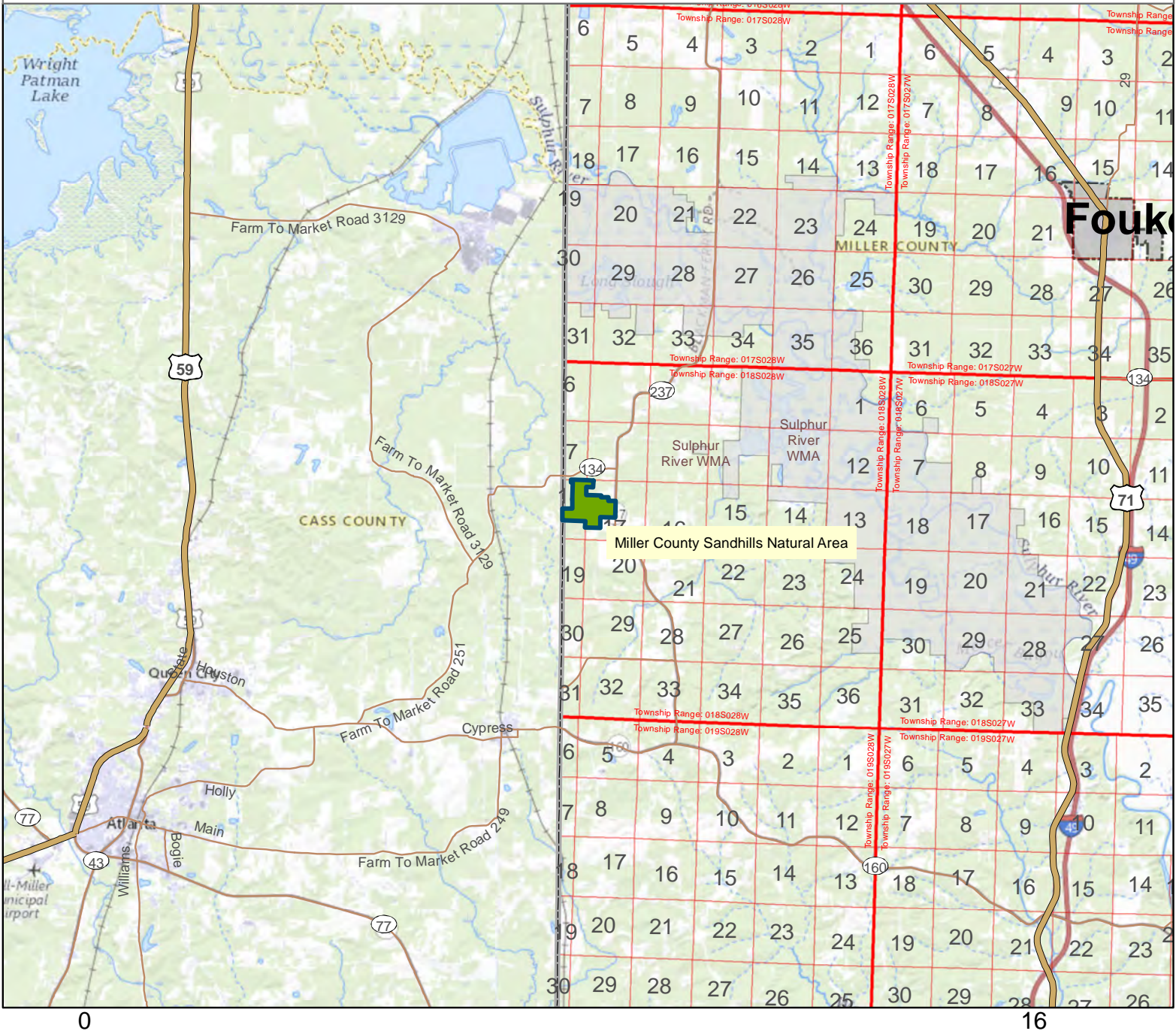




Miller County Sandhills Natural Area



County: Miller

Date Added: 1992

Acres: 274,3104

Directions: From Texarkana travel south on U.S. Highway 71 to State Highway 237. Travel south about 13.6 miles. The natural area is on the west side of State Highway 237. A primitive parking area is located about 0.8 mile south of the junction with State Highway 134 (County Road 434) on the west side of the road.

