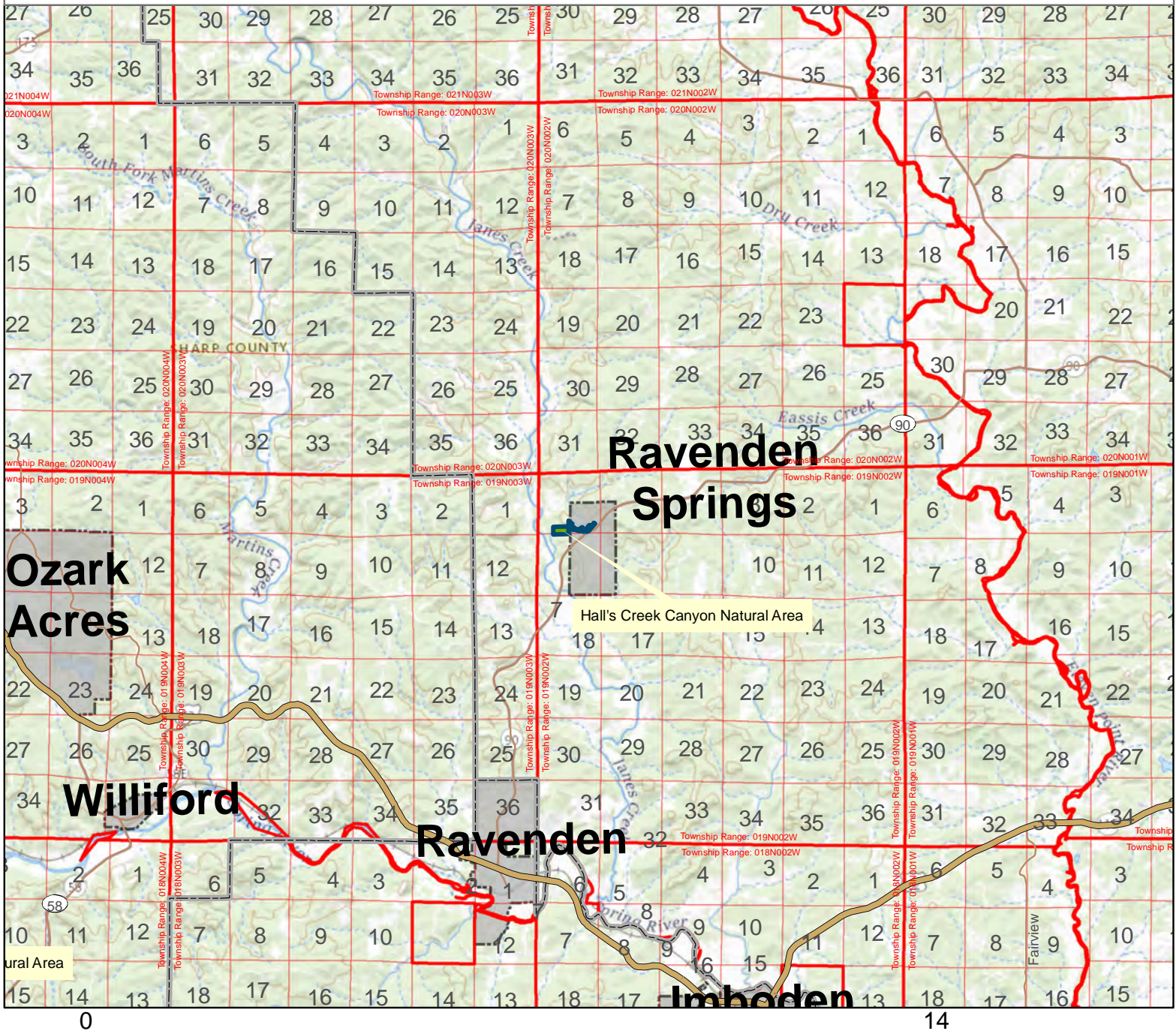




Hall's Creek Canyon Natural Area



0 14 Miles

County: Randolph

Date Added: 2019

Acres: 32.44

Directions: From Ravenden (Junction of US Highway 412 and State Highway 90) head North on State Highway 90 for approximately 6.3 miles. Turn left onto Upper Janes Creek Rd. Travel for 0.10 and turn left onto Canon/Canyon Street. The parking area is located at the end of the Street.

