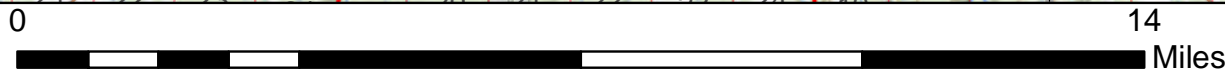
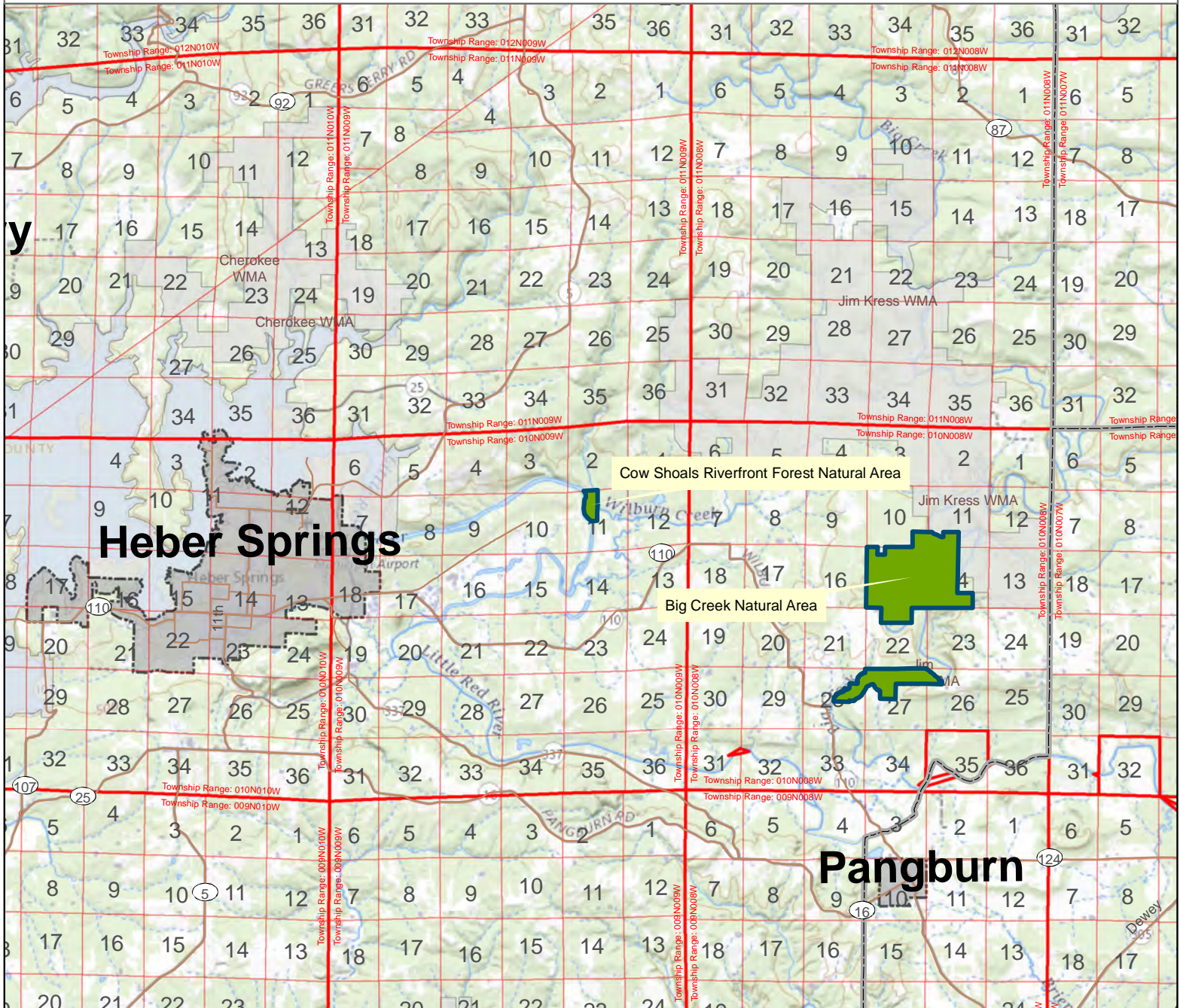


Cow Shoals Riverfront Forest Natural Area



County: Cleburne

Date Added: 1992

Acres: 63.27

Directions: Travel east from Heber Springs on State Highway 110. Turn left on Industrial Park Road (State Highway 210) and travel northeast 2.3 miles. Continue onto Cow Shoals Road one mile to parking for the natural area.

