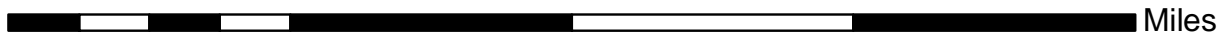
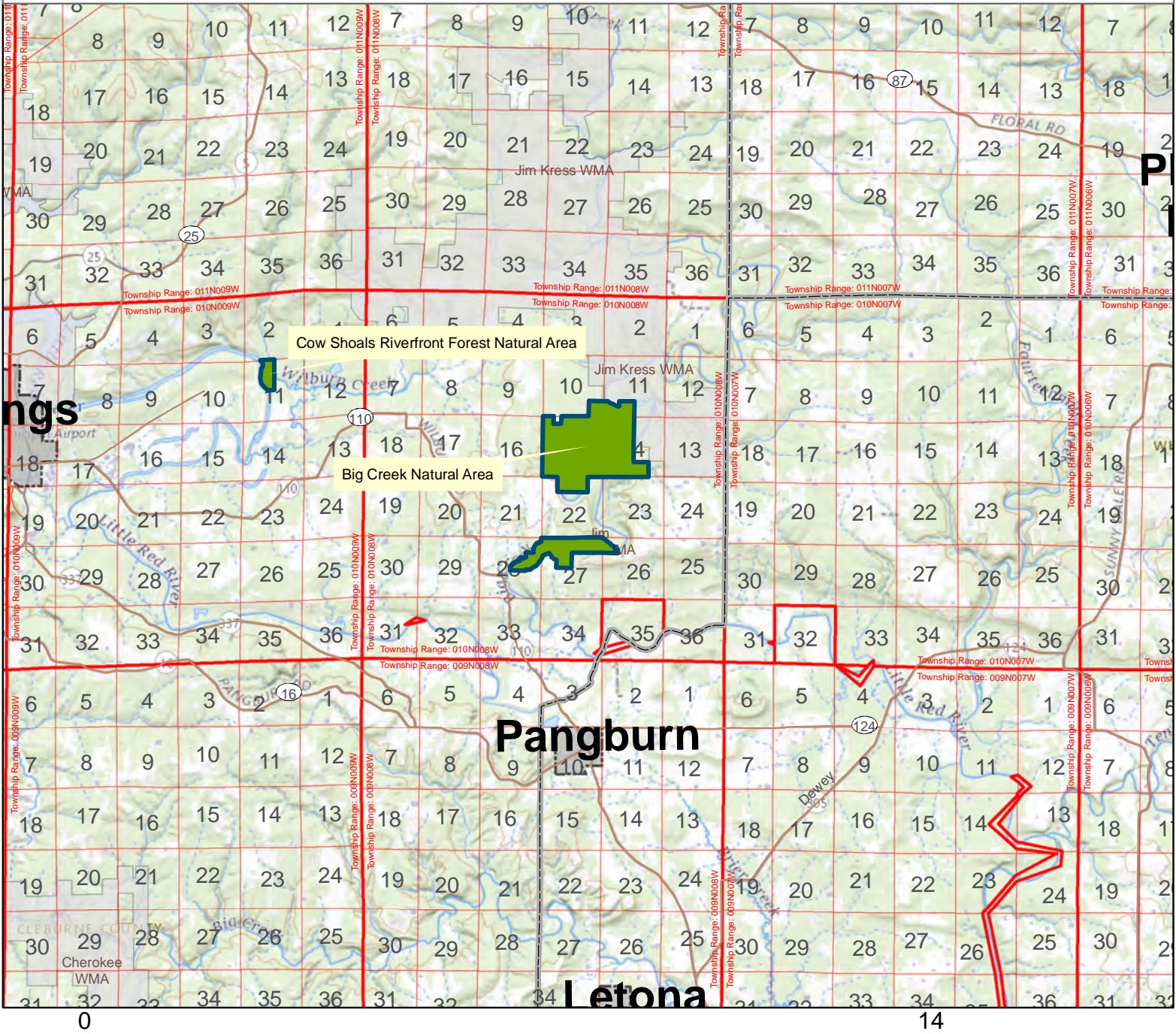


**Big Creek Natural Area**



County: Cleburne

Date Added: 1978

Acres: 1507.676

Directions: Take State Highway 110 east of Heber Springs to Wilburn. From Wilburn, go east on Tylar Road for approximately 0.9 mile. Turn right onto Center Chapel Road (gravel). Travel approximately 1.4 miles. At the stop sign, go straight onto Heritage Trail Road and follow the signs to the natural area.

