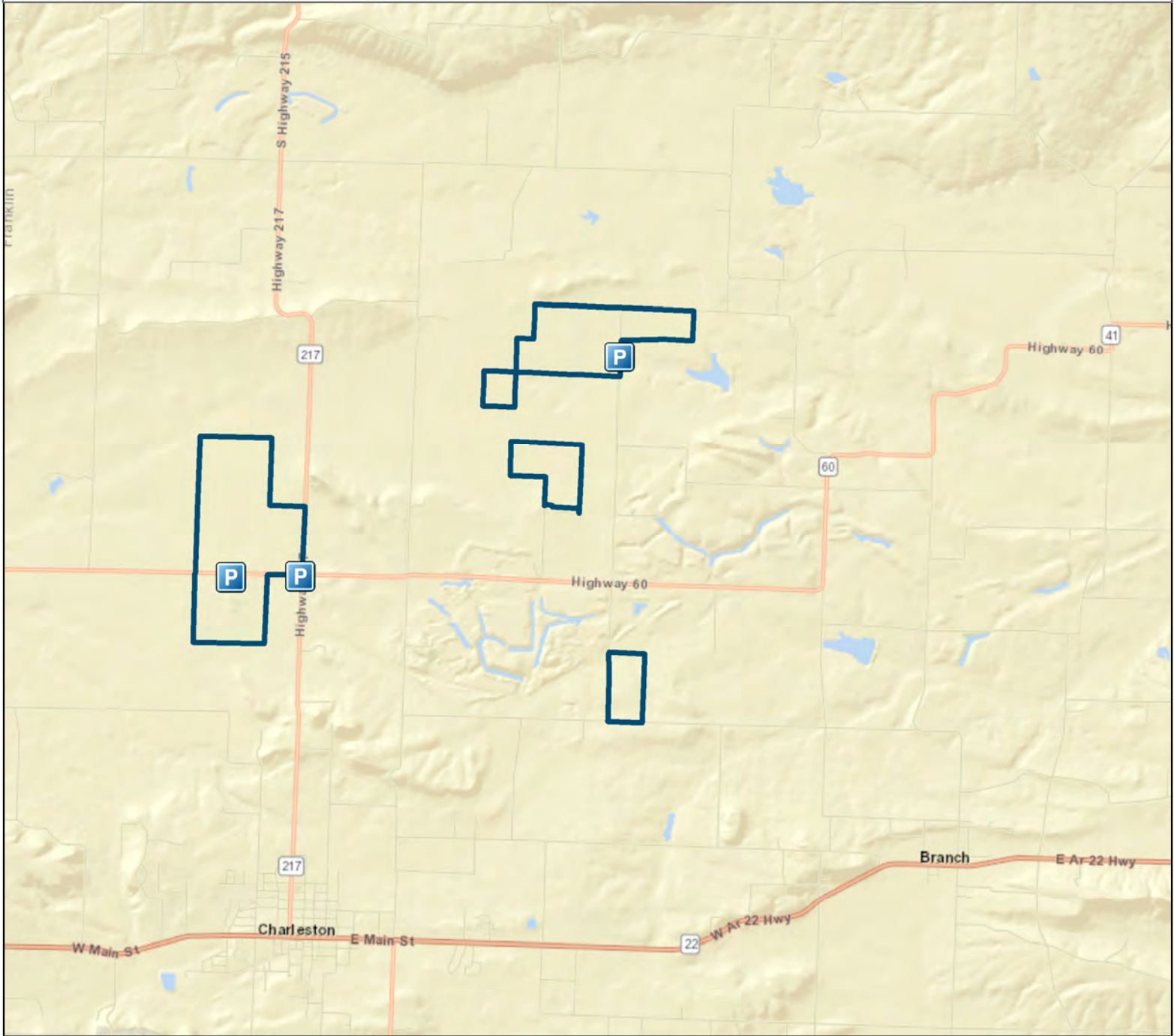


**H. E. Flanagan Prairie Natural Area**



County: Franklin

Date Added: 1988

Acres: 539

USGS Quadrangle: Branch 7.5', Charleston 7.5'

Directions: From the intersection of State Highways 60 and 217, just north of Charleston, go east 2.2 miles and turn left (north) onto Grand Prairie Road, go 1.5 miles and the parking area is on the left.

Legend



Parking



Natural Area

