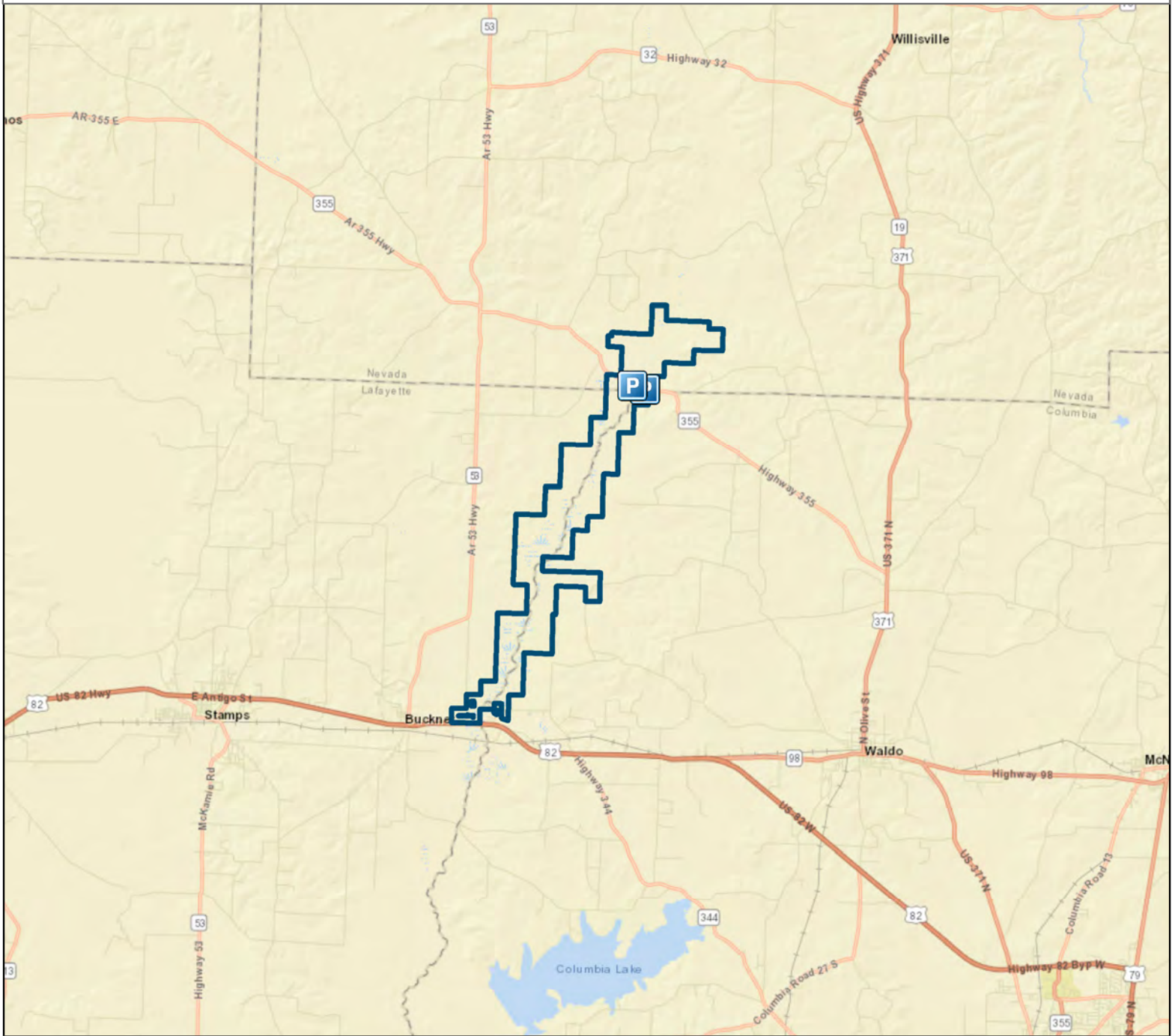


Falcon Bottoms Natural Area



County: Columbia, Lafayette, Nevada

Date Added: 1991

Acres: 4116.765

USGS Quadrangle: Falcon 7.5', Lamartine 7.5', Buckner 7.5'

Directions: From Interstate 30 in Prescott, take U.S. Highway 371 south to State Highway 53. Take State Highway 53 south to Falcon. At Falcon turn east on State Highway 355 and travel approximately 3 miles to Dorcheat Bayou. The natural area lies to the north and south of the bridge crossing along the Bayou.

Legend



Parking



Natural Area

