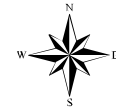
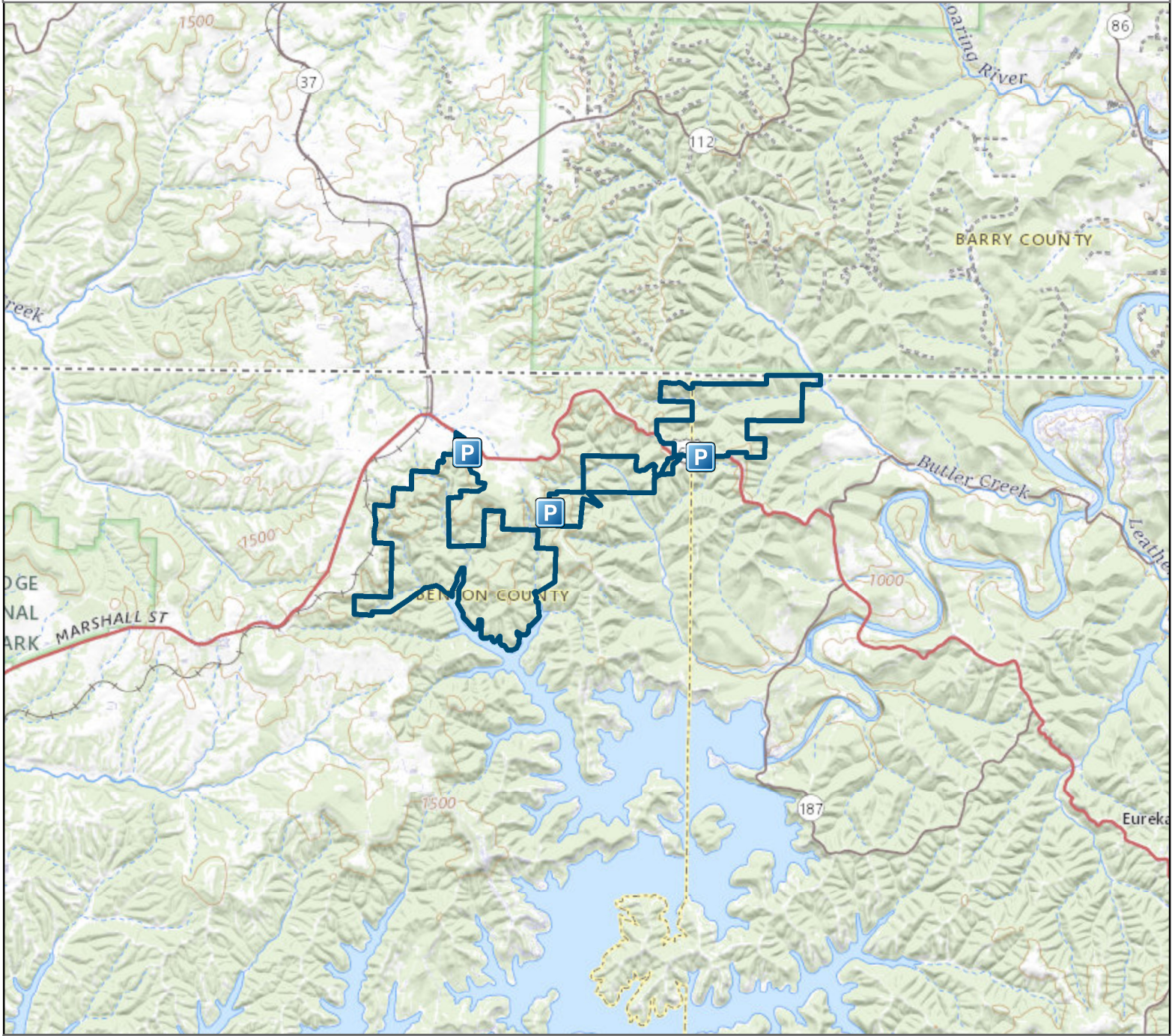




Arkansas Natural Heritage Commission
 System of Natural Areas
 Natural Area Boundaries
Devil's Eyebrow Natural Area



Date: 2/13/2023



County: Benton, Carroll

Date Added: 2012

Acres: 3734.371

USGS Quadrangle: Garfield 7.5', Beaver 7.5'

Directions: From the town of Garfield, travel east on U.S. Highway 62 for 4 miles to the community of Gateway. From the junction of Highways 62 and 37 at Gateway, continue east on U.S. Highway 62 for 0.4 miles to a gravel access road on the right (south) side of U.S. Highway 62 (marked with a sign). Follow the gravel access road to the parking area.

Legend

- Parking
- Natural Area



Disclaimer: This map is for general reference purposes only and is not a legal document. User assumes all risks.

