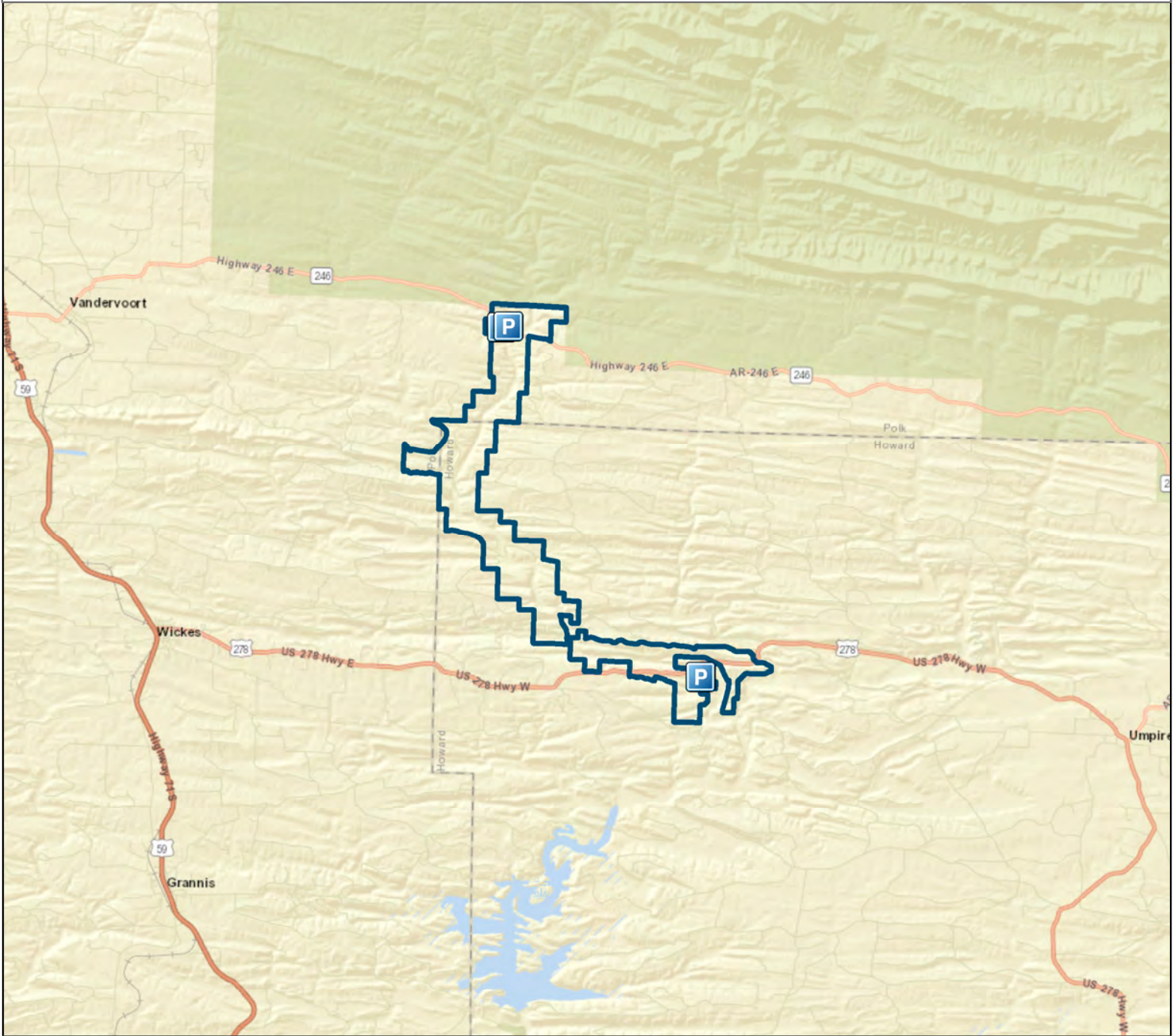


Cossatot River State Park-Natural Area



County: Howard, Polk
USGS Quadrangle: Wickes 7.5', Baker Springs 7.5', Eagle Mountain 7.5'

Date Added: 1989

Acres: 4470.2

Directions: The area may be reached by traveling U.S. Highway 278 (old State Highway 4) west from Umpire about 9 miles or east from U.S. Highway 71 at Wickes about the same distance. State Highway 246 passes through the northern portion of the area between Athens and Vandervoort. The Visitor Center is located off of U.S. Highway 278.

Legend

- Parking
- Natural Area

