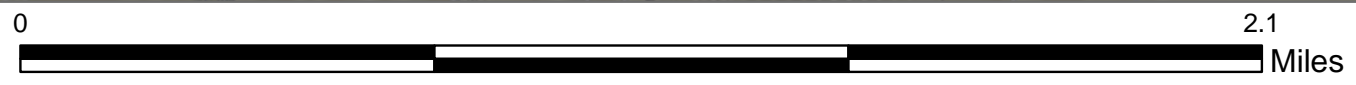
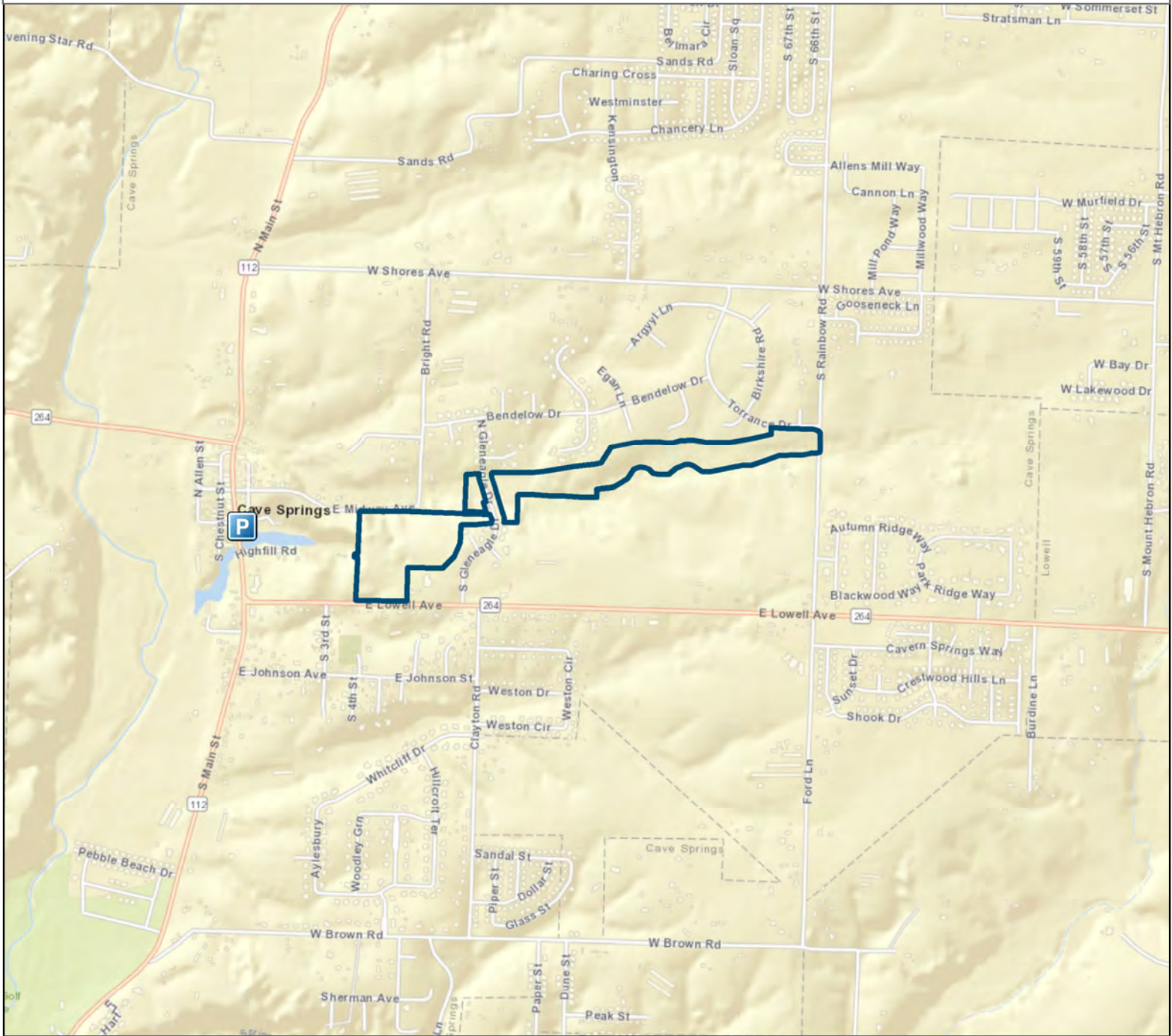


Cave Springs Cave Natural Area



County: Benton

Date Added: 1985

Acres: 57.265

USGS Quadrangle: Bentonville South 7.5'

Directions: From State Highway 112/264 junction on the south side of the town of Cave Springs, proceed north about 0.25 mile to Midway Avenue. Turn right (east) and travel 0.25 mile to the northwest corner of the natural area. Park along roadside.

Legend

