

Arkansas's Historic Districts

Arkansas's neighborhoods are familiar and comforting. Home is where we return after a long day at work, or a visit to a far-away place. Within our neighborhoods we create a sense of community. We share values, interests, and histories with our neighbors and friends. Every person and family becomes an ingredient in the melting pot of American culture.

In the days before the development of television and electric air conditioning, the front porch was a popular place to seek a cool breeze on a warm evening and discuss the events of the day with family and friends who lived on the street.



The Sulphur Springs Park Reserve Historic District was a recreational focal point for locals and visitors during the 1900s. (Photo courtesy of Arkansas History Commission)

Children would play in the front yard while the adults would talk and maybe enjoy refreshments as they sat and watched the sunset. These were more relaxed times, when deciding if it was time to give the old house a new coat of paint was often the most pressing decision to be made.



Three early twentieth-century commercial buildings represent the busy commercial center of a once thriving riverport at Arkansas City. (Photo courtesy of Arkansas History Commission)

Things weren't much different down at the corner store. The shopkeepers knew their customers by name, and the neighborhood children knew which merchants were good for a free sample of ice cream or a discount on a handful of penny candy. The shops and stores were nearly as comfortable to the patrons as their own homes. It was a much more personal way of doing business than being just another face at the mega-mall of today. There were no super-stores where everything could be found under one roof. Shopping for the family



The parade ground at Fort Logan H. Root Military Post Historic District in North Little Rock is still surrounded by late nineteenth-century military barracks. (Photo courtesy of Arkansas History Commission)

reminder of why Arkansas is a great place to live. The differing architectural styles represent the development of the community, and the backgrounds of the people who made their homes in Arkansas. But no matter how diverse their backgrounds, they shared a common interest in making their neighborhoods safe and comfortable places to live.

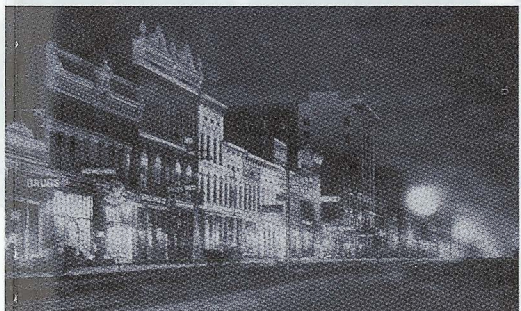


The Calico Rock Historic District displays vernacular stone and brick commercial structures built to serve early twentieth-century residents and rail travelers. (Photo courtesy of Arkansas History Commission)



The Eureka Springs Historic District encompasses the town boundaries and includes residential and commercial buildings constructed in the late nineteenth to early twentieth century. (Photo courtesy of Arkansas History Commission)

required visiting different stores, each one specializing in a particular product. The brightly colored storefronts beckoned to shoppers, who knew that each storekeeper was not only an expert on what he or she sold, but each was also a trusted friend. Going shopping was as much like visiting neighbors as transacting business.



The cosmopolitan beauty of Garrison Avenue was compared in 1900 to streets in Paris, France. Many of the same facades remain in the West Garrison Avenue Historic District of Fort Smith. (Photo courtesy of Arkansas History Commission)

These old residential neighborhoods and commercial areas stand as a record of a way of life that once existed in this country. They remind us of a quieter, less complex time when where you were going wasn't as important as where you called "home." It was the people who gave the neighborhoods a sense of community, and in return the neighborhoods gave the people a sense of belonging.



Helena's downtown commercial district reveals the prosperity it enjoyed as a county seat, Mississippi River port and regional rail hub. (Photo courtesy of Arkansas History Commission)

shopkeepers knew their customers by name, and the neighborhood children knew which merchants were good for a free sample of ice cream or a discount on a handful of penny candy. The shops and stores were nearly as comfortable to the patrons as their own homes. It was a much more personal way of doing business than being just another face at the mega-mall of today. There were no super-stores where everything could be found under one roof. Shopping for the family



Downtown Little Rock was the shopping and entertainment center for the state attracting residents from rural outlying areas. (Photo courtesy of Arkansas History Commission)

How To Use This Map

This brochure lists Arkansas Historic Districts, which are keyed by region to a map on the reverse side. It includes only historic districts listed on the National Register of Historic Places through March 2003. Key: **Name**, location, description, date listed on National Register.

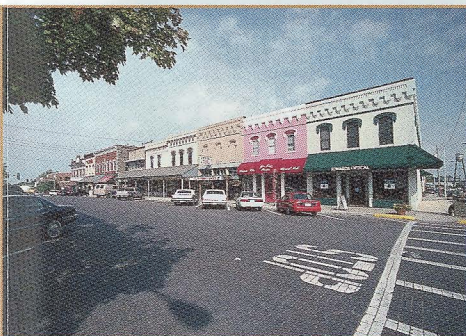
NORTH WEST

A1. Sulphur Springs Park Reserve, Hwy. 59, Sulphur Springs, 1884 park with features from 19th, early 20th centuries, 07/08/99.

A2. Sulphur Springs Old School Complex Historic District, 512 Black St., Sulphur Springs, contains 1941 school, 1925 gym and 1949 cafeteria, 02/16/01.

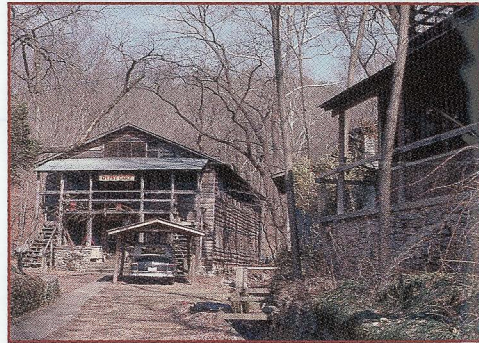
A3. Bentonville West Central Ave. Historic District, between SW A St. and SW G St., Bentonville, 41 structures built 1885-1935, 10/22/92.

A4. Bentonville Third Street Historic District, 1st 2 1/2 blocks of SE 3rd St., Bentonville, structures built between 1885-1926 and including Craftsman, Italianate, Folk Victorian and Stick-style architecture, 11/12/93.



A5. Rogers Commercial Historic District at Rogers contains buildings erected between 1888 and 1943 that exhibit a wide variety of architectural styles ranging from the nineteenth-century Italianate to the mid-twentieth century Art Moderne, originally listed 01/28/88, boundary increased 09/30/93.

A6. Gypsy Camp Historic District, off Hwy. 59, Siloam Springs, eight structures and associated landscape features dating from 1921-28 campground, 01/28/88.



A7. Siloam Springs Downtown Historic District, bounded by Sager Creek on the W, Ashley St. to the N, Madison Ave. to the E, and Twin Springs St. to the S, Siloam Springs, containing 65 commercial and institutional structures built between 1890 and the mid-1940s, 03/26/95.

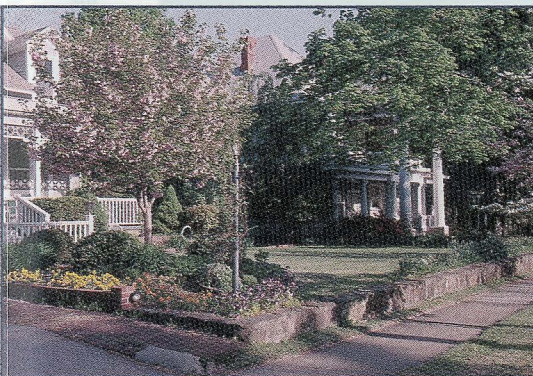
A8. Carl's Addition Historic District, S. College, W. Alpine and S. Wright between Sager Creek and W. Twin Springs Ave., Siloam Springs, 1895-1946 structures in Queen Anne Revival, Craftsman, Colonial Revival, Folk Victorian, Tudor Revival and Mediterranean styles, 07/17/97.

A9. Shiloh Historic District, bounded by Spring Creek, Shiloh, Main, Johnson and Mill Sts., Springdale, sites and structures dating from 1830-1930, 08/31/78.

A10. Lake Wedington Historic District, junction of Hwy. 16 and Forest Service Rd. 1750, Savoy, collection of recreational structures built 1936-37 through Soil Conservation Service and Works Progress Administration, 09/11/95.

A11. Mount Nord Historic District, Mount Nord Ave., Fayetteville, 1901-1925 residential area, 09/16/82.

A12. Washington-Willow Historic District (as amended), bounded by College and Olive Aves. and Prospect and Spring Sts., Fayetteville, 1828-1945 residential area, originally listed 05/23/80, boundary increased 03/28/95.



A13. Wilson Park (Rock House) Historic District, bounded by College and Wilson Aves. and Louise Sts., Fayetteville, historic residential area with buildings dating from 1900-1945, 03/31/95.

A14. Eureka Springs Historic District, most of the area in Eureka Springs, virtually intact late 19th- and early 20th-century health resort community, originally listed 12/18/70, boundary increased 01/29/79.

A15. Lake Leatherwood Park Historic District, County Rd. 61, Eureka Springs, ca. 1938 ensemble of recreational structures, 11/24/98.



A16. Tall Pines Motor Inn Historic District, Hwy. 62 and Pivot Rock Rd., Eureka Springs, Rustic-style 1947 tourist court, 01/15/99.

A17. Harrison Courthouse Square Historic District, bordered by N. Walnut, W. Ridge, N. Willow and W. Stephenson, Harrison, featuring examples of late 19th and early 20th century commercial architecture, 05/06/99.

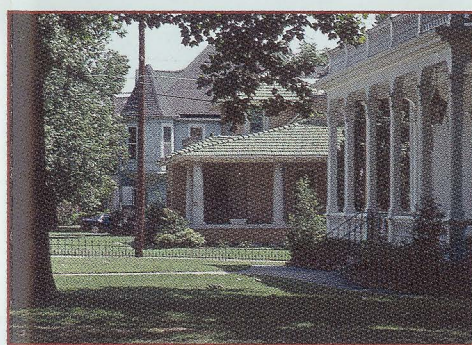
A18. Rush Historic District, Rush Rd. near Yellville, remains of 1880-1940 zinc mining community, 02/27/87.



A19. Buffalo Point, Buffalo National River near Yellville, 1939-41 Civilian Conservation Corps-built structures, 10/20/88.

A20. Willmerring Tourist Cabins Historic District, Hwy. 65, Silver Hill, ensemble of vernacular cabins built in 1946, 11/15/00.

A21. Parker-Hickman Farm Historic District, Buffalo National River at Erbie, 1850s pioneers' house with associated outbuildings and site features, 08/11/87.



A22. Big Buffalo Valley Historic District, Buffalo National River near Ponca, pioneer structures and site features dating to the 1850s, originally listed 07/29/87, amended 11/07/90.

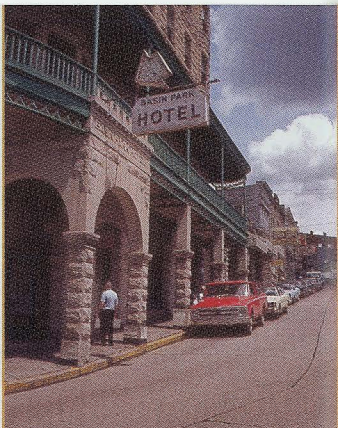
A23. Twin Bridges Historic District, County Rds. 11 and 3412, Morrow, pair of 1922 closed-spandrel, concrete-deck bridges, 03/07/94.

A24. Devil's Den State Park Historic District, Hwy. 74 near Winslow, cabins and other site features built around 1936 by Civilian Conservation Corps, 06/24/94.

A25. Belle Grove Historic District, bounded by N. 4th, N. 9th, N. B. and N. H Sts., Fort Smith, 1865-1920 residential district, 07/16/73.

A26. West Garrison Ave. Historic District, bounded roughly by 13th St., N. B St., 1st St. and Parker Ave., Fort Smith, 1870-1950 commercial district, 04/26/79.

A27. Van Buren Historic District, 6 blocks of Main St., Van Buren 1880-1900 commercial structures, 04/30/76.



A-25. The Belle Grove Historic District in Fort Smith contains nineteenth and twentieth century buildings located in what historically was the frontier town's finest residential neighborhood.

A-27. Van Buren Historic District at Van Buren presents a streetscape little changed from the days when the city was one of the last stopping points on the way to the Wild West.

A-28. Gray Spring Recreation Area/Forest Service Road 1003 Historic District near Cass is a reminder of the recreational facility and road-building duties of the Depression-era Civilian Conservation Corps.

A-30. Russellville Downtown Historic District preserves reminders of the governmental, social and commercial functions that made the area the focus of life in that Pope County town.

A-31. Spring Lake Recreation Area Historic District, Forest Service Rd. 1602, Stafford vic., 1937 recreational facility built by Works Progress Administration, 09/11/95.

A-32. Blue Hole Road Historic District, Blue Hole Rd. at Petit Jean State Park, ca. 1935 set of 11 Civilian Conservation Corps-built culverts, a guard rail and a retaining wall, 05/28/92.

A-33. Cedar Falls Trail Historic District, adjacent to main access road at Petit Jean State Park, three footbridges and nine sets of stone steps built by the CCC around 1935, 05/28/92.

A-34. Blue Bailey-Lake Roosevelt Historic District, E and N of Hwy. 154 at Petit Jean State Park, ca. 1935 CCC-built lakes, waterfall, structures, walls and steps, 05/28/92.

A-35. Morrilton Commercial Historic District, lying north and south of Broadway in downtown Morrilton, reflecting commercial development between 1880 and 1950, 03/07/03.

A-36. Damascus CCC Camp #3781 Historic District, west of Camp Hill Road, Damascus, featuring Rustic-style well cover, entrance gate and menu board, 12/31/02.

A-37. Blue Hole Road Historic District, Blue Hole Rd. at Petit Jean State Park, ca. 1935 set of 11 Civilian Conservation Corps-built culverts, a guard rail and a retaining wall, 05/28/92.

A-38. Rush Historic District near Yellville is now a ghost town, a reminder of the thriving community that gathered to remove zinc from the surrounding hills.

A-39. Buffalo Point, Buffalo National River near Yellville, 1939-41 Civilian Conservation Corps-built structures, 10/20/88.

A-40. Willmerring Tourist Cabins Historic District, Hwy. 65, Silver Hill, ensemble of vernacular cabins built in 1946, 11/15/00.

A-41. Parker-Hickman Farm Historic District on Buffalo National River at Erbie is one of the state's finest collections of antebellum vernacular architecture, a tribute to the rugged pioneers who settled that region of Arkansas.

A-42. Big Buffalo Valley Historic District, Buffalo National River near Ponca, pioneer structures and site features dating to the 1850s, originally listed 07/29/87, amended 11/07/90.

A-43. Twin Bridges Historic District, County Rds. 11 and 3412, Morrow, pair of 1922 closed-spandrel, concrete-deck bridges, 03/07/94.

A-44. Devil's Den State Park Historic District, Hwy. 74 near Winslow, cabins and other site features built around 1936 by Civilian Conservation Corps, 06/24/94.

A-45. Belle Grove Historic District, bounded by N. 4th, N. 9th, N. B. and N. H Sts., Fort Smith, 1865-1920 residential district, 07/16/73.

A-46. West Garrison Ave. Historic District, bounded roughly by 13th St., N. B St., 1st St. and Parker Ave., Fort Smith, 1870-1950 commercial district, 04/26/79.

A-47. Van Buren Historic District, 6 blocks of Main St., Van Buren 1880-1900 commercial structures, 04/30/76.

A-48. Rush Historic District near Yellville is now a ghost town, a reminder of the thriving community that gathered to remove zinc from the surrounding hills.

A-49. Buffalo Point, Buffalo National River near Yellville, 1939-41 Civilian Conservation Corps-built structures, 10/20/88.

A-50. Willmerring Tourist Cabins Historic District, Hwy. 65, Silver Hill, ensemble of vernacular cabins built in 1946, 11/15/00.

A-51. Parker-Hickman Farm Historic District on Buffalo National River at Erbie is one of the state's finest collections of antebellum vernacular architecture, a tribute to the rugged pioneers who settled that region of Arkansas.

A-52. Big Buffalo Valley Historic District, Buffalo National River near Ponca, pioneer structures and site features dating to the 1850s, originally listed 07/29/87, amended 11/07/90.

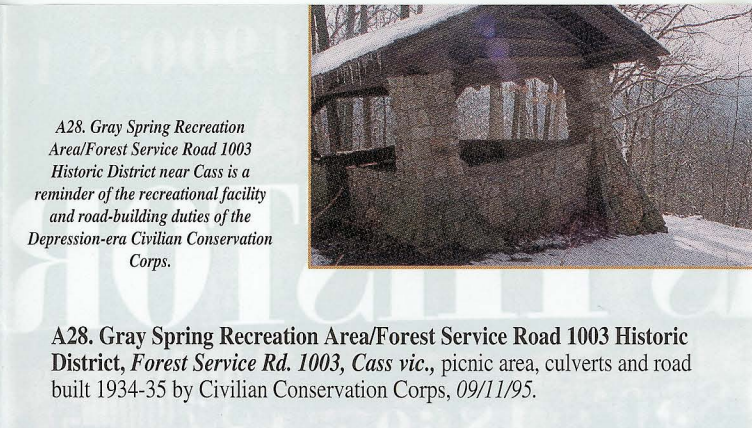
A-53. Twin Bridges Historic District, County Rds. 11 and 3412, Morrow, pair of 1922 closed-spandrel, concrete-deck bridges, 03/07/94.

A-54. Devil's Den State Park Historic District, Hwy. 74 near Winslow, cabins and other site features built around 1936 by Civilian Conservation Corps, 06/24/94.

A-55. Belle Grove Historic District, bounded by N. 4th, N. 9th, N. B. and N. H Sts., Fort Smith, 1865-1920 residential district, 07/16/73.

A-56. West Garrison Ave. Historic District, bounded roughly by 13th St., N. B St., 1st St. and Parker Ave., Fort Smith, 1870-1950 commercial district, 04/26/79.

A-57. Van Buren Historic District, 6 blocks of Main St., Van Buren 1880-1900 commercial structures, 04/30/76.



A-28. Gray Spring Recreation Area/Forest Service Road 1003 Historic District near Cass is a reminder of the recreational facility and road-building duties of the Depression-era Civilian Conservation Corps.

A-29. Ozark Courthouse Square Historic District, bounded by W. Commercial, W. Main, 2nd and 3rd Sts., 1890-1930 vernacular commercial buildings, 12/27/02.

A-30. Russellville Downtown Historic District preserves reminders of the governmental, social and commercial functions that made the area the focus of life in that Pope County town.

A-31. Spring Lake Recreation Area Historic District, Forest Service Rd. 1602, Stafford vic., 1937 recreational facility built by Works Progress Administration, 09/11/95.

A-32. Blue Hole Road Historic District, Blue Hole Rd. at Petit Jean State Park, ca. 1935 set of 11 Civilian Conservation Corps-built culverts, a guard rail and a retaining wall, 05/28/92.

A-33. Cedar Falls Trail Historic District, adjacent to main access road at Petit Jean State Park, three footbridges and nine sets of stone steps built by the CCC around 1935, 05/28/92.

A-34. Blue Bailey-Lake Roosevelt Historic District, E and N of Hwy. 154 at Petit Jean State Park, ca. 1935 CCC-built lakes, waterfall, structures, walls and steps, 05/28/92.

A-35. Morrilton Commercial Historic District, lying north and south of Broadway in downtown Morrilton, reflecting commercial development between 1880 and 1950, 03/07/03.

A-36. Damascus CCC Camp #3781 Historic District, west of Camp Hill Road, Damascus, featuring Rustic-style well cover, entrance gate and menu board, 12/31/02.

A-37. Blue Hole Road Historic District, Blue Hole Rd. at Petit Jean State Park, ca. 1935 set of 11 Civilian Conservation Corps-built culverts, a guard rail and a retaining wall, 05/28/92.

A-38. Rush Historic District near Yellville is now a ghost town, a reminder of the thriving community that gathered to remove zinc from the surrounding hills.

A-39. Buffalo Point, Buffalo National River near Yellville, 1939-41 Civilian Conservation Corps-built structures, 10/20/88.

A-40. Willmerring Tourist Cabins Historic District, Hwy. 65, Silver Hill, ensemble of vernacular cabins built in 1946, 11/15/00.

A-41. Parker-Hickman Farm Historic District on Buffalo National River at Erbie is one of the state's finest collections of antebellum vernacular architecture, a tribute to the rugged pioneers who settled that region of Arkansas.

A-42. Big Buffalo Valley Historic District, Buffalo National River near Ponca, pioneer structures and site features dating to the 1850s, originally listed 07/29/87, amended 11/07/90.

A-43. Twin Bridges Historic District, County Rds. 11 and 3412, Morrow, pair of 1922 closed-spandrel, concrete-deck bridges, 03/07/94.

A-44. Devil's Den State Park Historic District, Hwy. 74 near Winslow, cabins and other site features built around 1936 by Civilian Conservation Corps, 06/24/94.

A-45. Belle Grove Historic District, bounded by N. 4th, N. 9th, N. B. and N. H Sts., Fort Smith, 1865-1920 residential district, 07/16/73.

A-46. West Garrison Ave. Historic District, bounded roughly by 13th St., N. B St., 1st St. and Parker Ave., Fort Smith, 1870-1950 commercial district, 04/26/79.

A-47. Van Buren Historic District, 6 blocks of Main St., Van Buren 1880-1900 commercial structures, 04/30/76.

A-48. Rush Historic District near Yellville is now a ghost town, a reminder of the thriving community that gathered to remove zinc from the surrounding hills.

A-49. Buffalo Point, Buffalo National River near Yellville, 1939-41 Civilian Conservation Corps-built structures, 10/20/88.

A-50. Willmerring Tourist Cabins Historic District, Hwy. 65, Silver Hill, ensemble of vernacular cabins built in 1946, 11/15/00.

A-51. Parker-Hickman Farm Historic District on Buffalo National River at Erbie is one of the state's finest collections of antebellum vernacular architecture, a tribute to the rugged pioneers who settled that region of Arkansas.

A-52. Big Buffalo Valley Historic District, Buffalo National River near Ponca, pioneer structures and site features dating to the 1850s, originally listed 07/29/87, amended 11/07/90.

A-53. Twin Bridges Historic District, County Rds. 11 and 3412, Morrow, pair of 1922 closed-spandrel, concrete-deck bridges, 03/07/94.

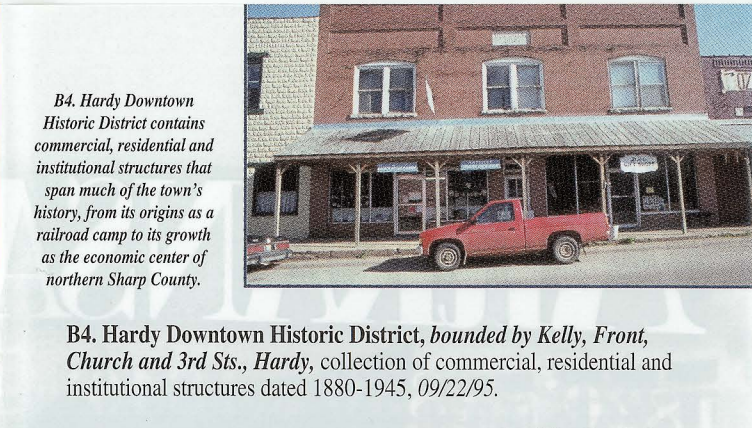
A-54. Devil's Den State Park Historic District, Hwy. 74 near Winslow, cabins and other site features built around 1936 by Civilian Conservation Corps, 06/24/94.

A-55. Belle Grove Historic District, bounded by N. 4th, N. 9th, N. B. and N. H Sts., Fort Smith, 1865-1920 residential district, 07/16/73.

A-56. West Garrison Ave. Historic District, bounded roughly by 13th St., N. B St., 1st St. and Parker Ave., Fort Smith, 1870-1950 commercial district, 04/26/79.

A-57. Van Buren Historic District, 6 blocks of Main St., Van Buren 1880-1900 commercial structures, 04/30/76.

A-58. Rush Historic District near Yellville is now a ghost town, a reminder of the thriving community that gathered to remove zinc from the surrounding hills.



B-4. Hardy Downtown Historic District, bounded by Kelly, Front, Church and 3rd Sts., Hardy, collection of commercial, residential and institutional structures dated 1880-1945, 09/22/95.

B-5. Woodland Courts, near junction of Dawson and Old CCC Rds., Hardy, 10 ca. 1938 Plain Traditional-style cabins, 11/27/92.

B-6. Crystal River Tourist Camp Historic District at Cave City is a magical ensemble of some of the quirkier vernacular structures in the entire state of Arkansas.

B-7. Batesville Commercial Historic District, Main and Central Sts., Batesville, historic commercial and public structures erected 1877-1940, originally listed 10/07/82, amended 10/05/90.

B-8. Batesville East Main Historic District, Main St. between 7th and 11th Sts., Batesville, residences built 1870-1930 in Plain Traditional, Craftsman, Colonial Revival, Queen Anne, and Italianate styles, originally listed 12/22/83, amended 12/27/96.

B-9. Clover Bend Historic District, Hwy. 228, Clover Bend, contains high school and other buildings erected 1937-42 in Farm Security Administration project, 09/17/90.

B-10. West Washington Ave. Historic District at Jonesboro includes examples of the American Foursquare, Queen Anne, Classical Revival, Tudor Revival, and Spanish Revival styles of architecture.

B-11. Burdette School Complex Historic District, 153 E. Park Lane, educational structures built 1922-1948, 10/28/01.

B-12. Hale Avenue Historic District, S side of Hale Ave. across from courthouse, Osceola, historic commercial buildings erected 1902-17, 09/14/87.

B-13. Calico Rock Historic District, containing many commercial structures built of locally quarried stone, exemplifies the town's determination to erect quality buildings with materials available in its somewhat isolated location.

B-14. Camp Ouachita Girl Scout Camp Historic District near Lake Sylvia is a rare example of a Girl Scout camp erected by the Works Progress Administration and Civilian Conservation Corps, and remains a favorite for generations of Scouts who camped there.

B-15. Hillcrest Historic District at Little Rock contains houses, commercial structures, and institutional buildings erected 1890-1940 in the capital city's first streetcar suburb.

B-16. Crystal River Tourist Camp Historic District at Cave City is a magical ensemble of some of the quirkier vernacular structures in the entire state of Arkansas.

B-17. Batesville Commercial Historic District, containing both commercial and public structures, is a virtual document of the downtown's development between 1877 and 1940.

B-18. Batesville East Main Historic District, Main St. between 7th and 11th Sts., Batesville, residences built 1870-1930 in Plain Traditional, Craftsman, Colonial Revival, Queen Anne, and Italianate styles, originally listed 12/22/83, amended 12/27/96.

B-19. Clover Bend Historic District, Hwy. 228, Clover Bend, contains high school and other buildings erected 1937-42 in Farm Security Administration project, 09/17/90.

B-20. West Washington Ave. Historic District at Jonesboro includes examples of the American Foursquare, Queen Anne, Classical Revival, Tudor Revival, and Spanish Revival styles of architecture.

B-21. Burdette School Complex Historic District, 153 E. Park Lane, educational structures built 1922-1948, 10/28/01.

B-22. Hale Avenue Historic District, S side of Hale Ave. across from courthouse, Osceola, historic commercial buildings erected 1902-17, 09/14/87.

B-23. Calico Rock Historic District, containing many commercial structures built of locally quarried stone, exemplifies the town's determination to erect quality buildings with materials available in its somewhat isolated location.

B-24. Camp Ouachita Girl Scout Camp Historic District near Lake Sylvia is a rare example of a Girl Scout camp erected by the Works Progress Administration and Civilian Conservation Corps, and remains a favorite for generations of Scouts who camped there.

B-25. Hillcrest Historic District at Little Rock contains houses, commercial structures, and institutional buildings erected 1890-1940 in the capital city's first streetcar suburb.

B-26. Crystal River Tourist Camp Historic District at Cave City is a magical ensemble of some of the quirkier vernacular structures in the entire state of Arkansas.

B-27. Batesville Commercial Historic District, containing both commercial and public structures, is a virtual document of the downtown's development between 1877 and 1940.

B-28. Batesville East Main Historic District, Main St. between 7th and 11th Sts., Batesville, residences built 1870-1930 in Plain Traditional, Craftsman, Colonial Revival, Queen Anne, and Italianate styles, originally listed 12/22/83, amended 12/27/96.

B-29. Clover Bend Historic District, Hwy. 228, Clover Bend, contains high school and other buildings erected 1937-42 in Farm Security Administration project, 09/17/90.

B-30. West Washington Ave. Historic District at Jonesboro includes examples of the American Foursquare, Queen Anne, Classical Revival, Tudor Revival, and Spanish Revival styles of architecture.

B-31. Burdette School Complex Historic District, 153 E. Park Lane, educational structures built 1922-1948, 10/28/01.

B-32. Hale Avenue Historic District, S side of Hale Ave. across from courthouse, Osceola, historic commercial buildings erected 1902-17, 09/14/87.

B-33. Calico Rock Historic District, containing many commercial structures built of locally quarried stone, exemplifies the town's determination to erect quality buildings with materials available in its somewhat isolated location.